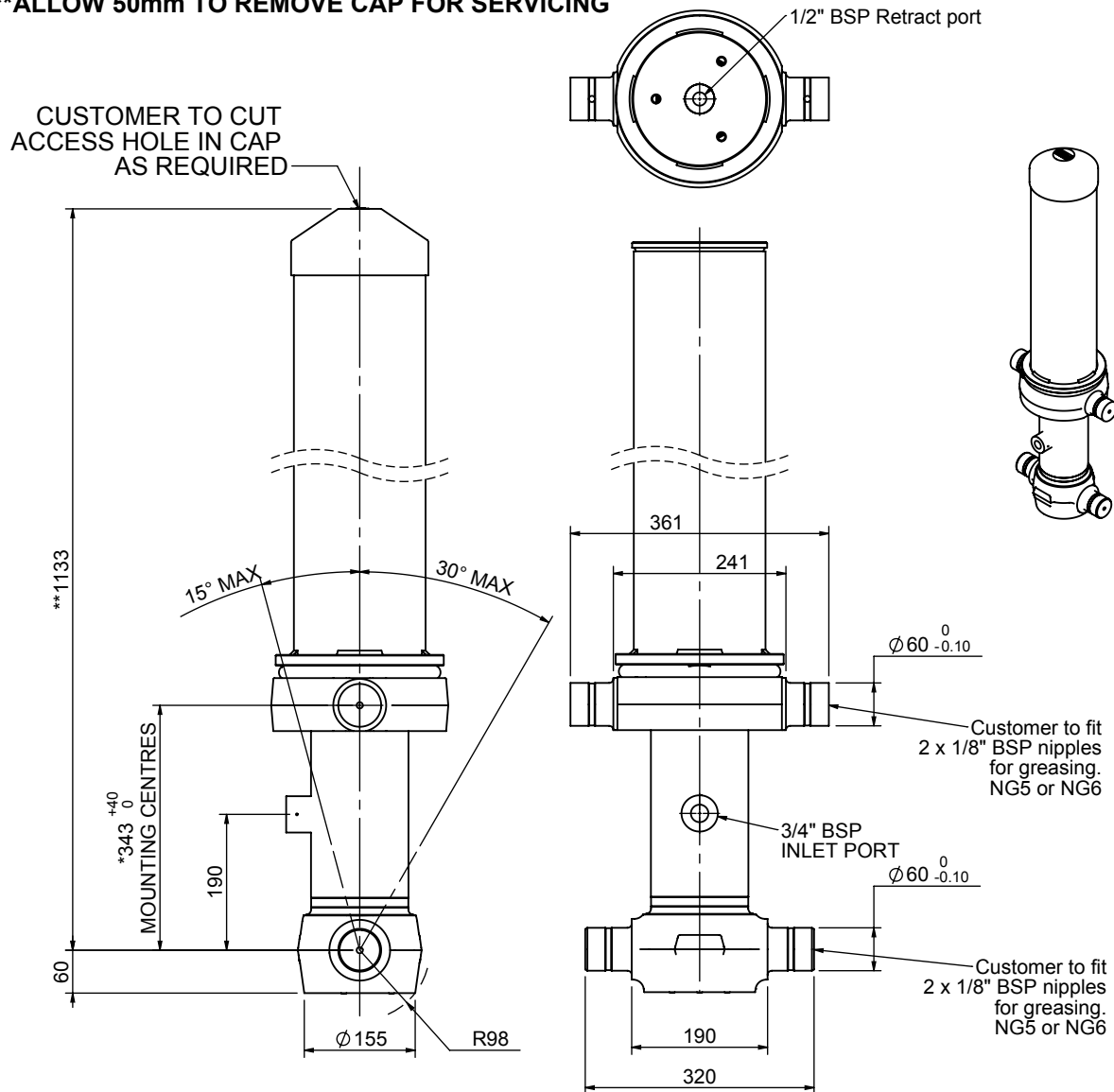


Cylinder 3 stage with double acting final stage

****ALLOW 50mm TO REMOVE CAP FOR SERVICING**



*Includes 14mm Pull Out.

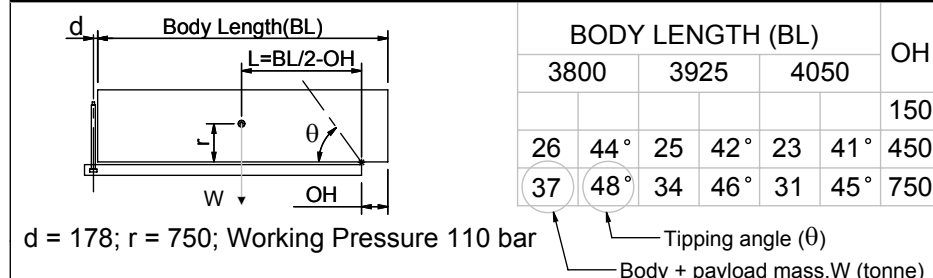
CB110032515B19A11

SPECIFICATION

TIPPING CAPACITY : 23-37 TONNES***

Stage	Diameter	Length	Stroke	Swept Volume
-	-	-	-	-
OUTER COVER	184	735	-	-
0	136	1075	-	-
1	117	1040	849	9
2	98	1040	867	7
3R	87	1040	799	-
3	79	1040	799	4
Total (+5/-10)			2515	20
Final stroke reduced by	0	Priming Volume		7
Cylinder Mass (Kg)	105	Total Volume (Litres)		27
Maximum Pressure (Bar)	150	Max. first stage thrust		130 KN

***TIPPING CAPACITY AT WORKING PRESSURE



Retract force @ Stage 3 = 15.65kN @150bar maximum pressure

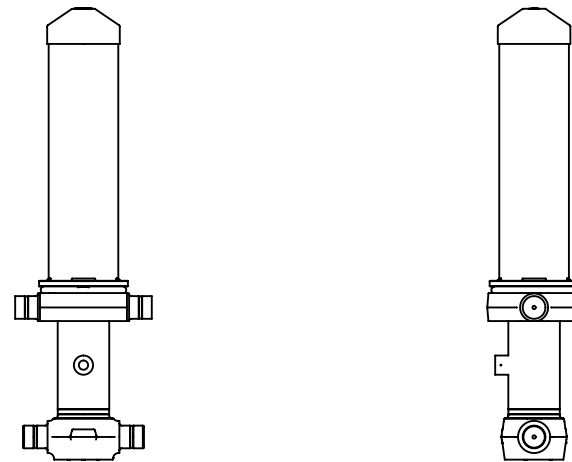
NOTES

- This cylinder is for lifting purposes only and side load conditions should be avoided
- Cylinder is painted in primer paint to RAL5013
- Refer to www.edbro.com for ;-
 - Bracket details
 - Installation instructions that must be observed
 - Correct oil selection
 - An explanation of tipping capacity
- This cylinder is typically for intermittent use in vacuum tanker applications. Refer to Edbro for other uses.



Edbro plc
 Nelson Street, Bolton, England, BL3 2JJ
 Tel +44 (0) 1204 528888 Fax +44 (0) 1204 531957
 Email: postmaster@edbro.com Web: www.edbro.com

Technical Specifications are subject to change without notice
 Date Created/Updated: 12 June 2014
 Refer www.edbro.com to confirm latest specification
 All dimensions are in 'mm', unless otherwise stated



CB110032515B19A11