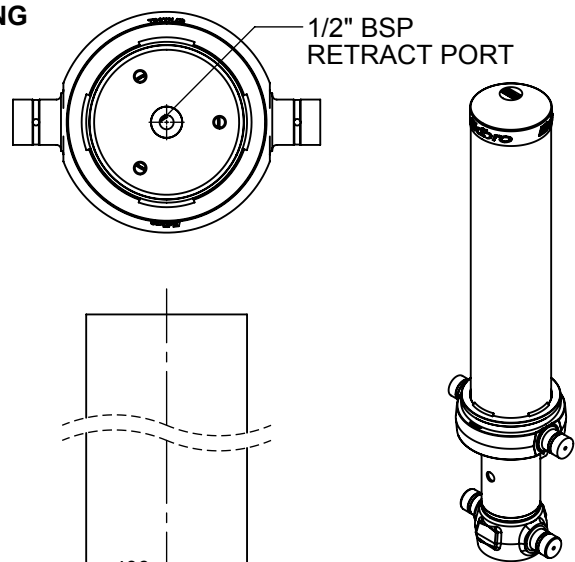
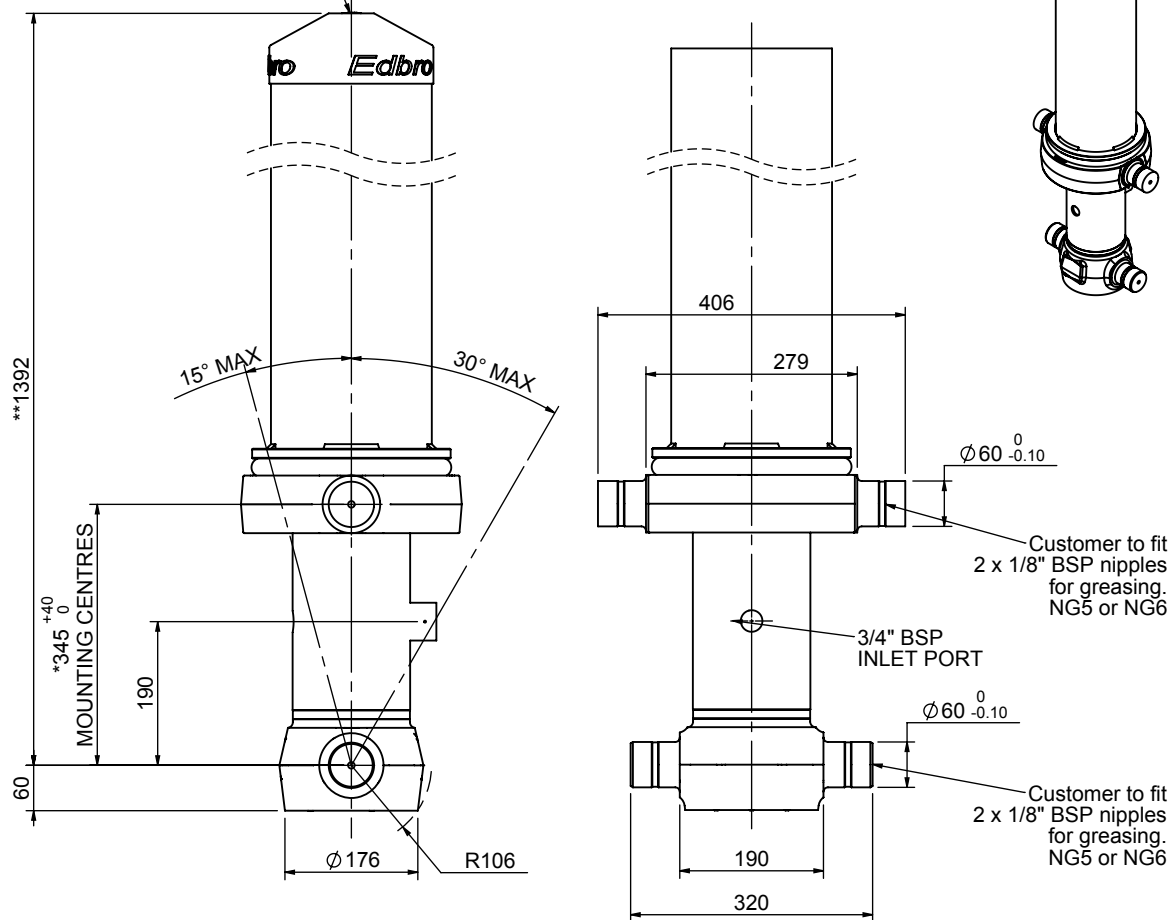


Cylinder 4 stage with double acting 4th stage

****ALLOW 50mm TO REMOVE CAP FOR SERVICING**



CUSTOMER TO CUT ACCESS HOLE IN CAP AS REQUIRED



*Includes 14mm Pull Out.

CB130044361B19A11

SPECIFICATION		TIPPING CAPACITY :22-34 TONNES***		
Stage	Diameter	Length	Stroke	Swept Volume
OUTER COVER	213	1005	-	-
0	155	1325	-	-
1	136	1290	1083	16
2	117	1290	1112	12
3	98	1290	1117	8
4R	87	1290	1049	-
4	79	1290	1049	5
Total (+5/-10)			4361	41
Final stroke reduced by	0	Priming Volume		11
Cylinder Mass (Kg)	168	Total Volume (Litres)		52
Maximum Pressure (Bar)	150	Max. first stage thrust		170 KN

***TIPPING CAPACITY AT WORKING PRESSURE

BODY LENGTH (BL)						OH
5500		5750		6000		
24	47°	23	45°	22	43°	150
28	50°	26	47°	25	45°	450
34	53°	31	50°	29	48°	750

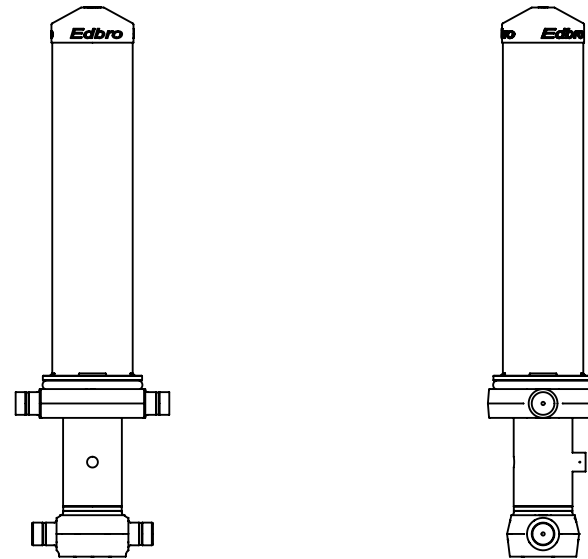
$d = 178; r = 750; \text{Working Pressure } 150 \text{ bar}$

Tipping angle (θ)
Body + payload mass, W (tonne)

Retract force @ Stage 4 = 15.65kN @150bar maximum pressure

NOTES

- This cylinder is for lifting purposes only and side load conditions should be avoided
- Cylinder is painted in primer paint to RAL5013
- Refer to www.edbro.com for:-
 - Bracket details
 - Installation instructions that must be observed
 - Correct oil selection
 - An explanation of tipping capacity
- This cylinder is typically for intermittent use in vacuum tanker applications. Refer to Edbro for other uses.



CB130044361B19A11