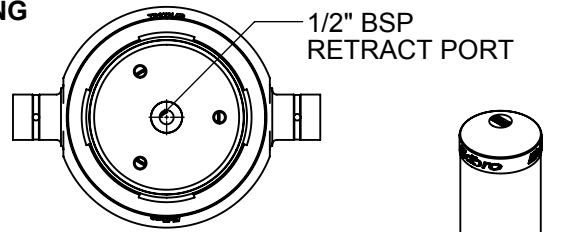


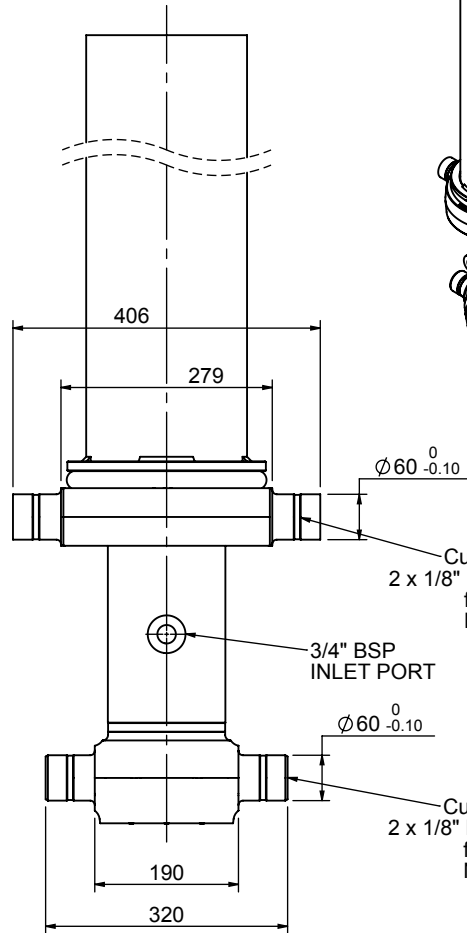
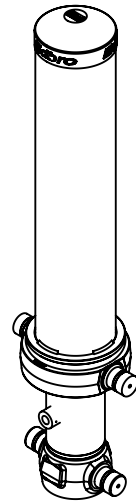
# Cylinder 4 stage with double acting 4th stage

**\*\*ALLOW 50mm TO REMOVE CAP FOR SERVICING**

CUSTOMER TO CUT ACCESS HOLE IN CAP AS REQUIRED



1/2" BSP RETRACT PORT



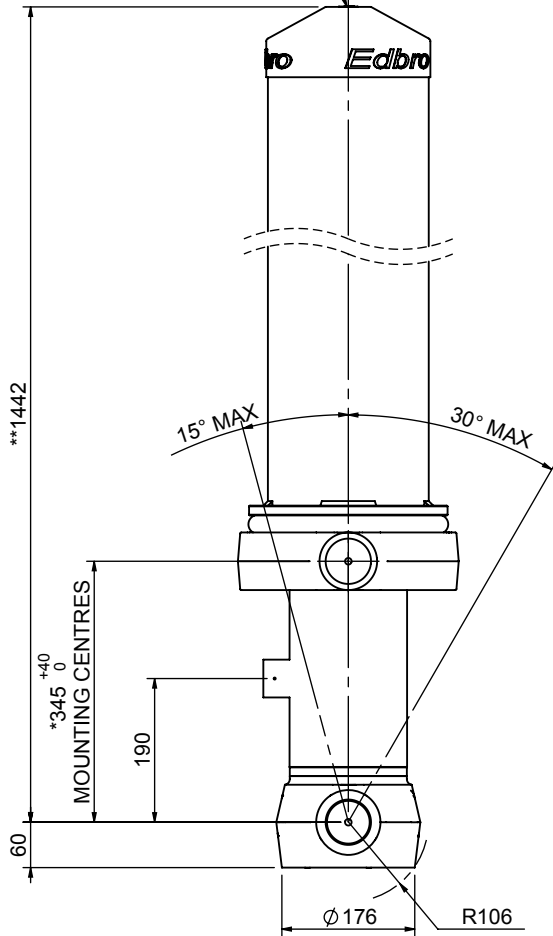
$\varnothing 60^{0}_{-0.10}$

Customer to fit 2 x 1/8" BSP nipples for greasing. NG5 or NG6

3/4" BSP INLET PORT

$\varnothing 60^{0}_{-0.10}$

Customer to fit 2 x 1/8" BSP nipples for greasing. NG5 or NG6



\*\*1442

15° MAX 30° MAX

\*345<sup>+40</sup><sub>0</sub> MOUNTING CENTRES

190

60

$\varnothing 176$

R106

\*Includes 14mm Pull Out.

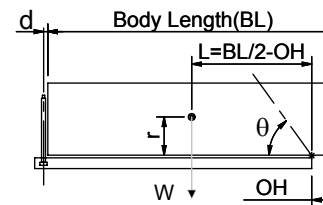
## CB130044561B19A11

### SPECIFICATION

TIPPING CAPACITY :26-40 TONNES\*\*\*

Stage	Diameter	Length	Stroke	Swept Volume
OUTER COVER	213	1055	-	-
0	155	1375	-	-
1	136	1340	1133	16
2	117	1340	1162	12
3	98	1340	1167	9
4R	87	1340	1099	-
4	79	1340	1099	5
Total (+5/-10)			4561	42
Final stroke reduced by	0	Priming Volume		11
Cylinder Mass (Kg)	169	Total Volume (Litres)		53
Maximum Pressure (Bar)	150	Max. first stage thrust		170 KN

### \*\*\*TIPPING CAPACITY AT WORKING PRESSURE



BODY LENGTH (BL)						OH
5750	6000	6250				
28	47°	27	45°	26	43°	150
33	50°	31	47°	29	45°	450
40	53°	36	50°	34	48°	750

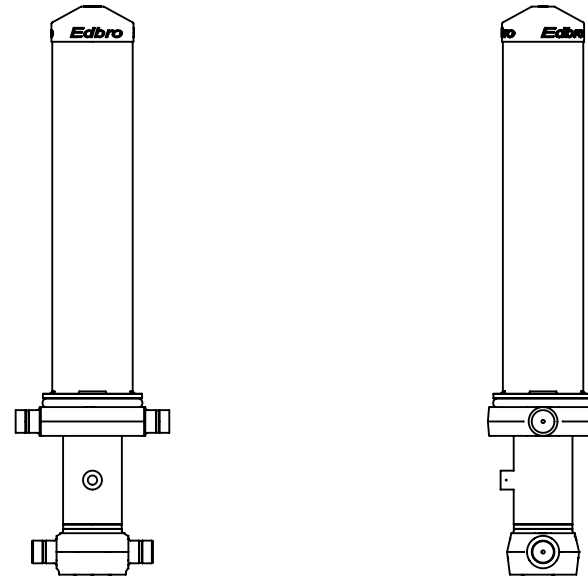
d = 178; r = 750; Working Pressure 150 bar

Tipping angle ( $\theta$ )  
Body + payload mass, W (tonne)

Retract force @ Stage 4 = 15.65kN @150bar maximum pressure

### NOTES

1. This cylinder is for lifting purposes only and side load conditions should be avoided
2. Cylinder is painted in primer paint to RAL5013
3. Refer to [www.edbro.com](http://www.edbro.com) for:-
  - Bracket details
  - Installation instructions that must be observed
  - Correct oil selection
  - An explanation of tipping capacity
4. This cylinder is typically for intermittent use in vacuum tanker applications. Refer to Edbro for other uses.



CB130044561B19A11