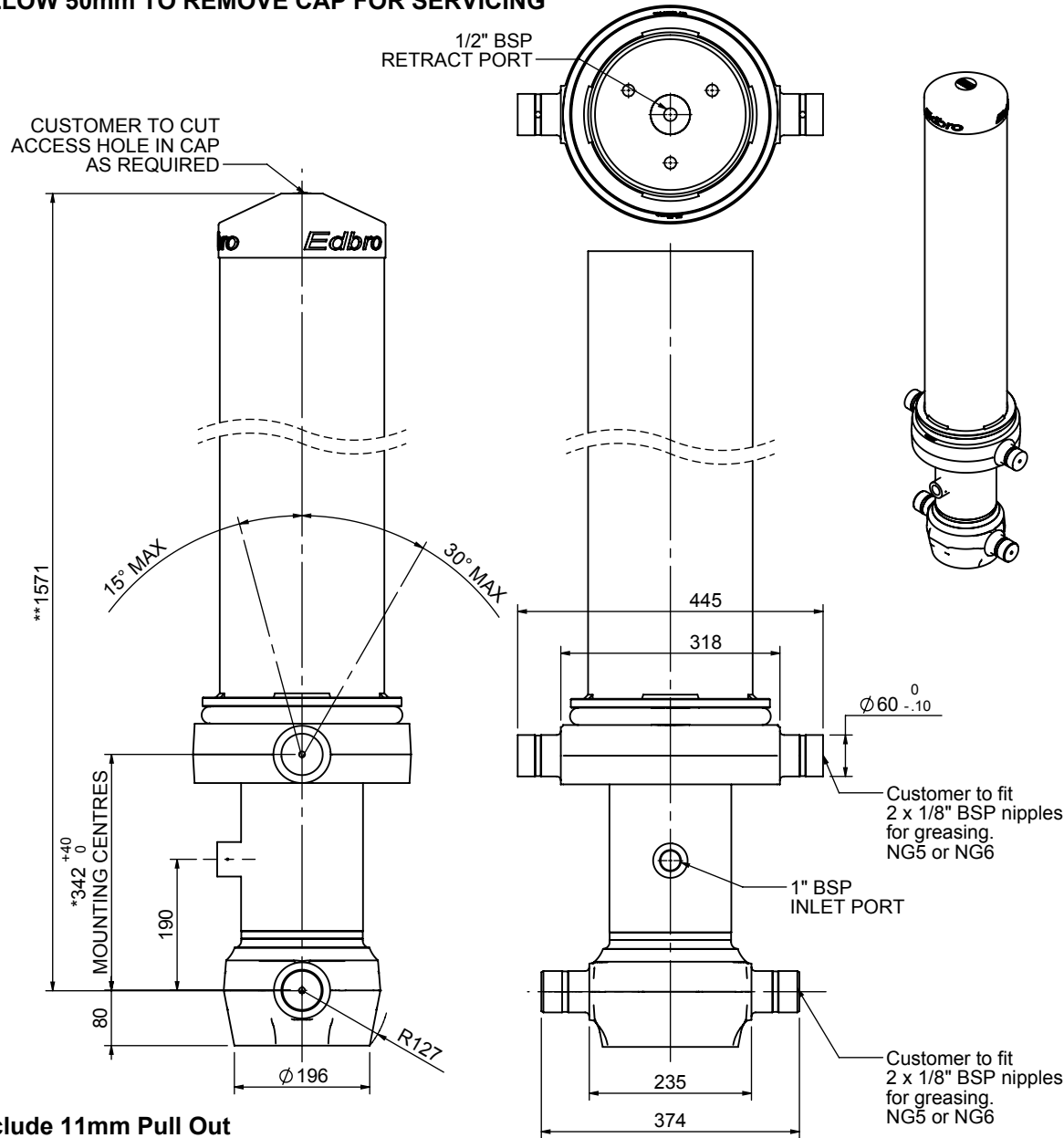


Cylinder 4 stage front end with Outer Cover

****ALLOW 50mm TO REMOVE CAP FOR SERVICING**



***Include 11mm Pull Out**

CB150045138B19A11

SPECIFICATION **RATED CAPACITY : 35-53 TONNES*****

Stage	Diameter	Length	Stroke	Swept Volume
-	-	-	-	-
OUTER COVER	239	1190	-	-
0	177	1525	-	-
1	155	1490	1275	24
2	136	1490	1297	19
3	117	1490	1312	14
4R	106	1490	1254	-
4	98	1490	1254	9
Final stroke reduced by	0	Total (+5/-10)	5138	57
Cylinder Mass (Kg)	231	Priming Volume	13.8	
Rated Pressure (Bar)	165	Total Volume (Litres)	66	
Maximum Pressure (Bar)	175	Max. first stage thrust	230 KN	

*****TIPPING CAPACITY AT RATED PRESSURE**

d	Body Length (BL)					OH
	6250	6750	7250			
40	48°	37	44°	35	41°	150
45	51°	41	47°	38	43°	450
53	54°	46	49°	42	45°	750

W = Body + payload mass, W (tonne)

L = BL/2 - OH

d = 229 ; r = 750; Working Pressure 165 bar
 Retract force @ stage 4 = 19.23 kN @ 150 bar maximum pressure

NOTES

- This cylinder is for lifting purposes only and side load conditions should be avoided
- Cylinder is painted in primer paint to RAL5013
- Refer to www.edbro.com for;-
 - Bracket details
 - Installation instructions that must be observed
 - Correct oil selection
 - An explanation of tipping capacity



JUST UK Ltd
 Edbro House, Nelson Street, Bolton, Lancashire BL3 2JJ UK
 Tel +44 (0) 1204 528888 Fax +44 (0) 1204 531957
 Email: sales@edbro.com Web: www.edbro.com

Technical Specifications are subject to change without notice
 Date Created/Updated: 11 November 2015 11:23:23
 Refer www.edbro.com to confirm latest specification
 All dimensions are in 'mm', unless otherwise stated