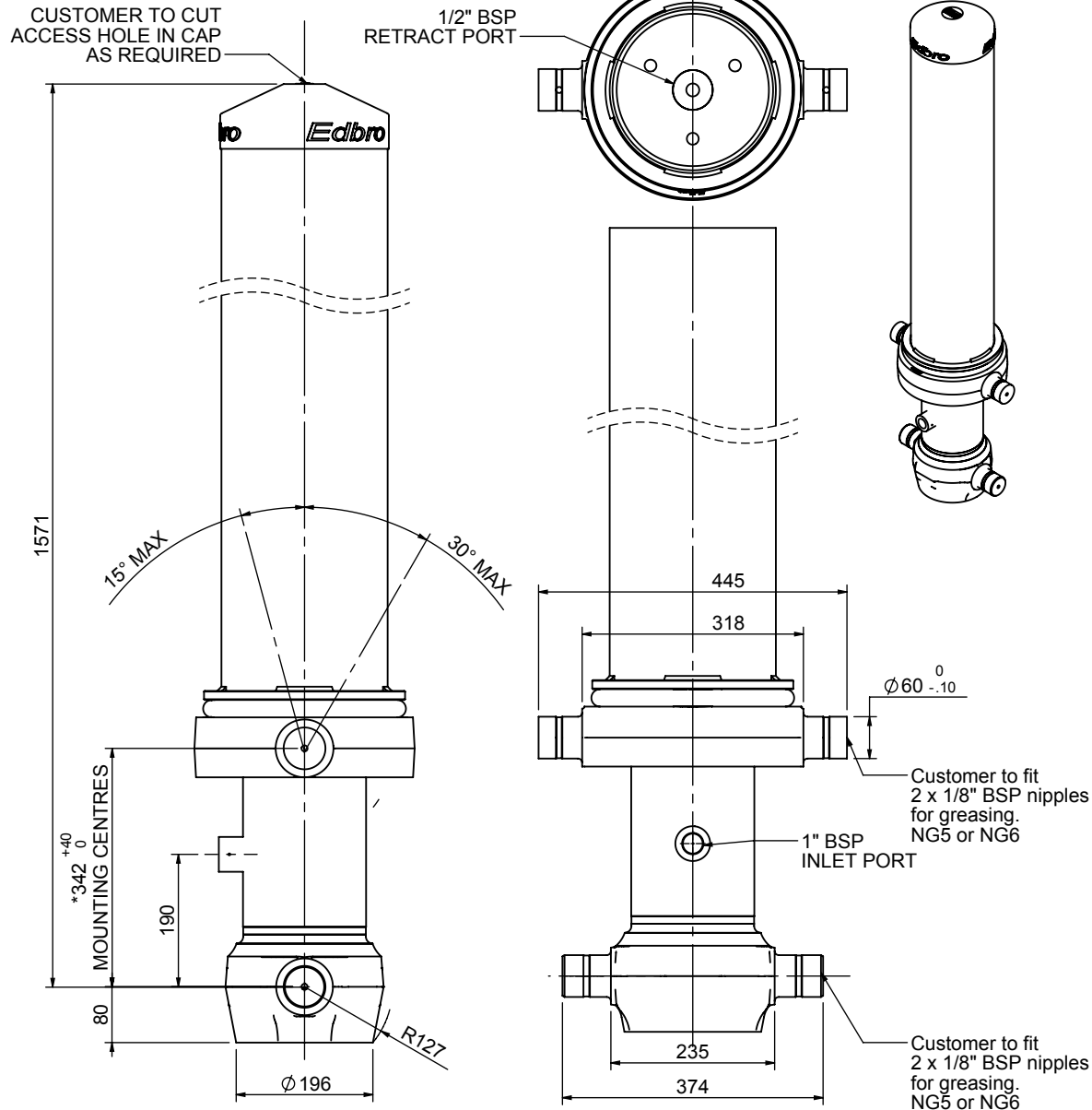


Cylinder 4 stage front end with Outer Cover

****ALLOW 50mm TO REMOVE CAP FOR SERVICING**



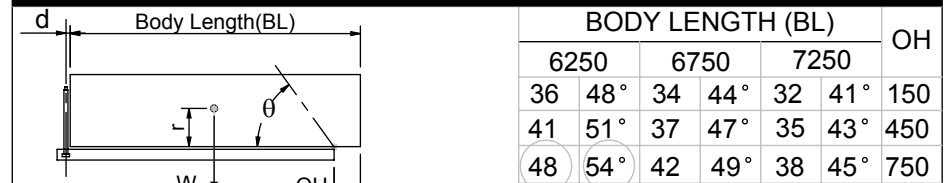
***Include 11mm Pull Out. All Stages Chrome Plated**

CB150045138B19A11C

SPECIFICATION **RATED CAPACITY : 32-48 TONNES*****

| Stage | Diameter | Length | Stroke | Swept Volume |
|-------------------------|----------|-------------------------|--------|--------------|
| - | - | - | - | - |
| OUTER COVER | 239 | 1190 | - | - |
| 0 | 177 | 1254 | - | - |
| 1 | 155 | 1490 | 1275 | 24 |
| 2 | 136 | 1490 | 1297 | 19 |
| 3 | 117 | 1490 | 1312 | 14 |
| 4R | 106 | 1458 | 1254 | 11 |
| 4 | 98 | 1458 | 1254 | - |
| Final stroke reduced by | 0 | Total (+5/-10) | 5138 | 68 |
| Cylinder Mass (Kg) | 231 | Priming Volume | | 13.8 |
| Rated Pressure (Bar) | 150 | Total Volume (Litres) | | 68 |
| Maximum Pressure (Bar) | 175 | Max. first stage thrust | | 230 KN |

*****TIPPING CAPACITY AT RATED PRESSURE**



$d = 229$; $r = 750$; Working Pressure 150 bar
 Retract force @ stage 4 = 19.23 kN @ 150bar maximum pressure

NOTES

1. This cylinder is for lifting purposes only and side load conditions should be avoided
2. Cylinder is painted in primer paint to RAL5013
3. Refer to www.edbro.com for;-
 - Bracket details
 - Installation instructions that must be observed
 - Correct oil selection
 - An explanation of tipping capacity



JUST UK Ltd
 Edbro House, Nelson Street, Bolton, Lancashire BL3 2JJ UK
 Tel +44 (0) 1204 528888 Fax +44 (0) 1204 531957
 Email: sales@edbro.com Web: www.edbro.com

Technical Specifications are subject to change without notice
 Date Created/Updated: 25 November 2015 11:45:10
 Refer www.edbro.com to confirm latest specification
 All dimensions are in 'mm', unless otherwise stated