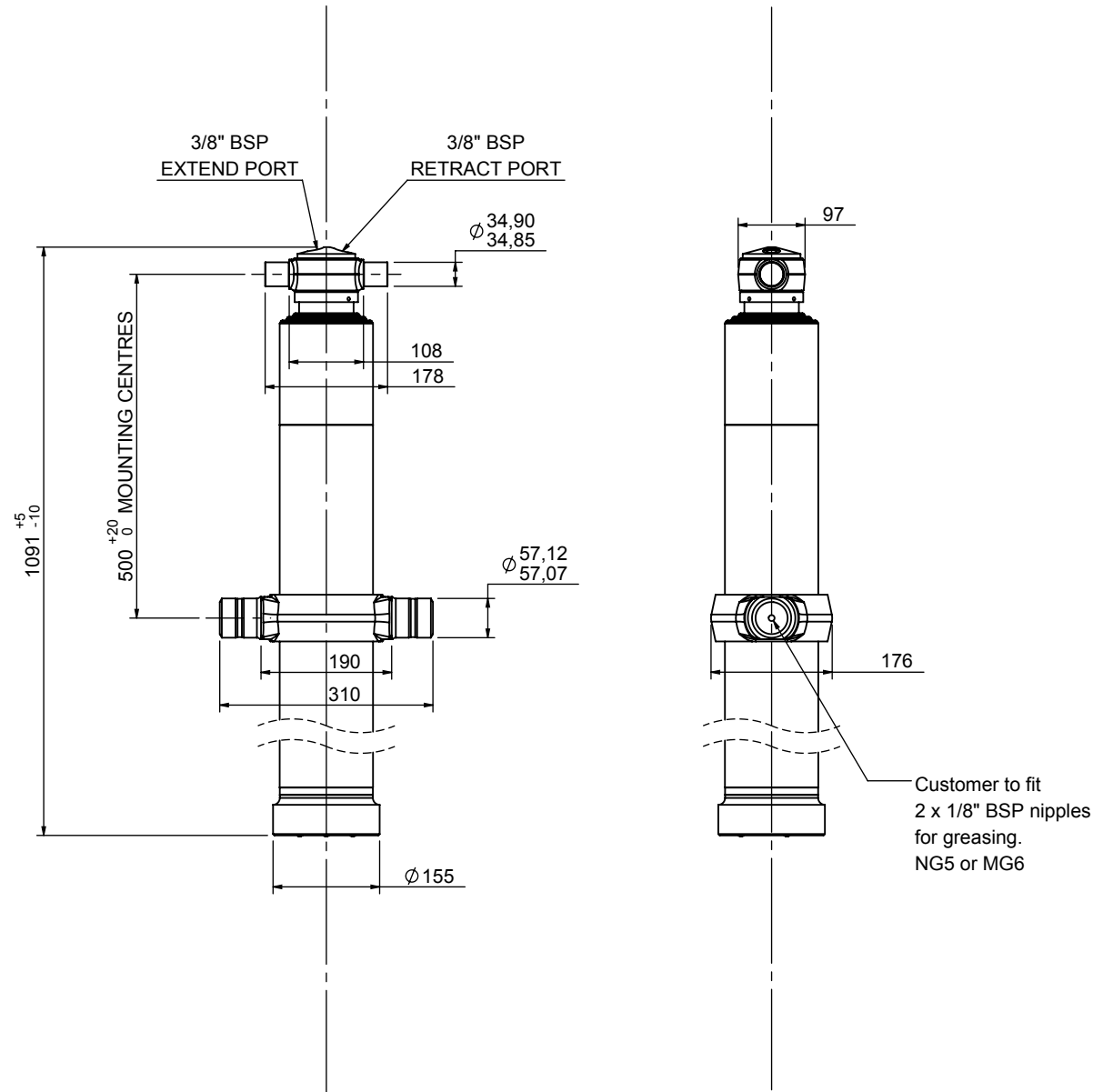


Double acting cylinder 3 stage with trunnion

CD11TT302251BA10500



SPECIFICATION

Stage	Tube Diameter	Tube Bore	Length	Stroke	Swept Volume (Extend)	Swept Volume (Retract)
Base	136	125	984	-	-	-
1	117	106	949	746	9.2	1.1
2	98	87	949	750	6.6	1.0
3	79	71	969	755	4.5	0.8
Total (+5/-10)				2251	mm	
Final stroke reduced by				0	mm	
Swept Vol (Extend)				20.3	Litres	
Swept Vol (Retract)				2.9	Litres	
Maximum Pressure				175	Bar	
Operating Pressure				175	Bar	
Cylinder Mass				75	kg	
Stage	Thrust (t)					
	Extend	Retract				
1	21.9	2.7				
2	15.7	2.3				
3	10.6	1.9				

NOTES

1. This cylinder is intended for load ejection purposes only and should not be used for compacting.
2. Cylinder is painted in primer to RAL5013.
3. Refer to www.edbro.com for:-
 - Bracket details
 - Installation instructions that must be observed
 - Correct oil selection
 - An explanation of ejection capacity

INNER TUBES HARD CHROMED

Edbro
SETTING THE INDUSTRY STANDARD

Edbro plc
Nelson Street, Bolton, England, BL3 2JJ
Tel +44 (0) 1204 528888 Fax +44 (0) 1204 531957
Email: postmaster@edbro.com Web: www.edbro.com

Technical Specifications are subject to change without notice
Date Created/Updated: 21 May 2018
Refer www.edbro.com to confirm latest specification
All dimensions are in 'mm', unless otherwise stated

