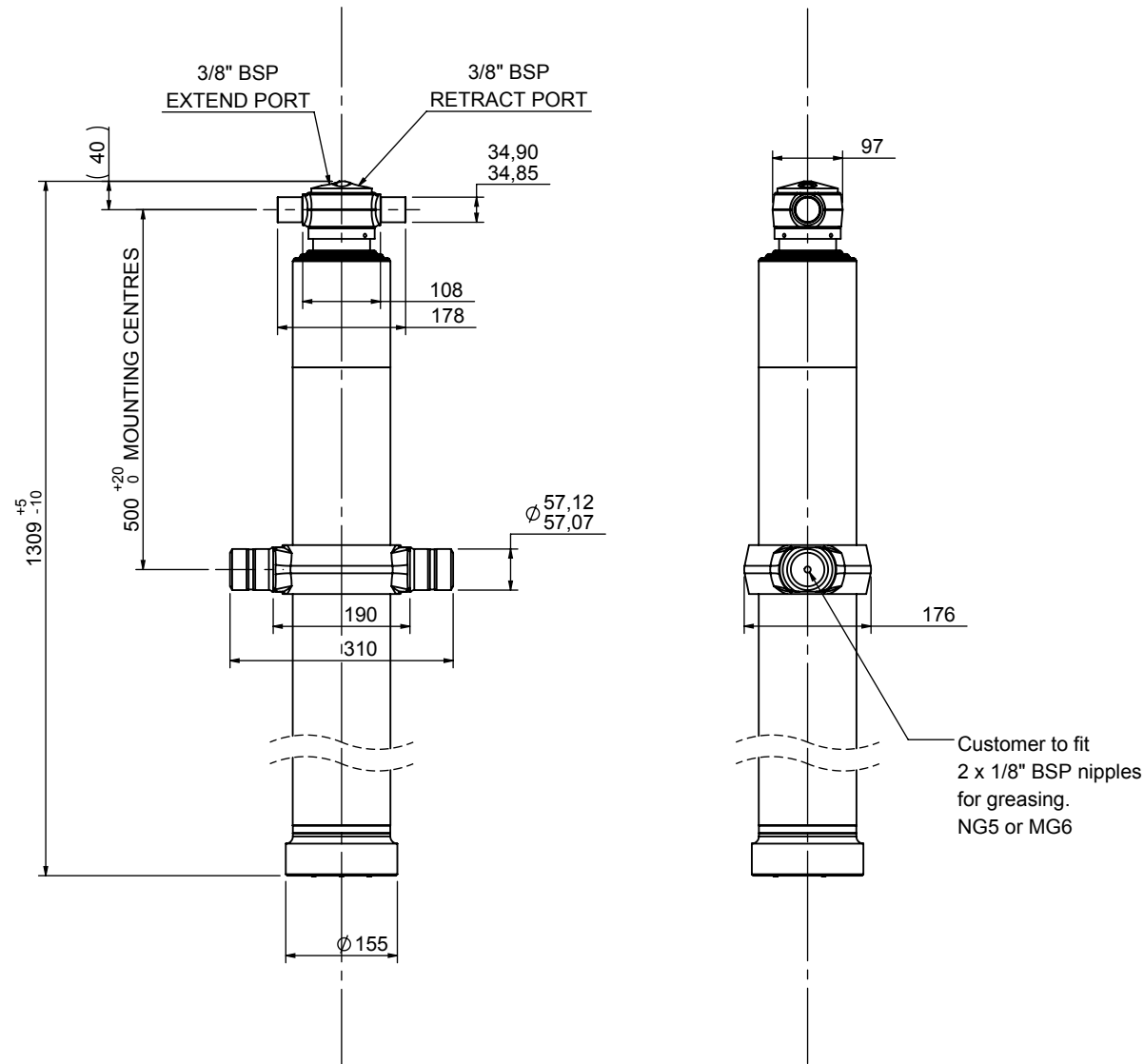


Double acting cylinder 3 stage with trunnion

CD11TT302905BA10500



SPECIFICATION

Stage	Tube Diameter	Tube Bore	Length	Stroke	Swept Volume (Extend)	Swept Volume (Retract)
Base	136	125	1202	-	-	-
1	117	106	1167	964	11.8	1.5
2	98	87	1167	968	8.5	1.2
3	79	71	1187	973	5.8	1.0
Total (+5/-10)				2905	mm	
Final stroke reduced by				0	mm	
Swept Vol (Extend)				26.1	Litres	
Swept Vol (Retract)				3.7	Litres	
Maximum Pressure				175	Bar	
Operating Pressure				175	Bar	
Cylinder Mass				86	kg	
Stage	Thrust (t)					
	Extend	Retract				
1	21.9	2.7				
2	15.7	2.3				
3	10.6	1.9				

NOTES

- This cylinder is intended for load ejection purposes only and should not be used for compacting.
- Cylinder is painted in primer to RAL5013.
- Refer to www.edbro.com for:-
 - Bracket details
 - Installation instructions that must be observed
 - Correct oil selection
 - An explanation of ejection capacity

INNER TUBES HARD CHROMED

Edbro
SETTING THE INDUSTRY STANDARD

Edbro plc
Nelson Street, Bolton, England, BL3 2JJ
Tel +44 (0) 1204 528888 Fax +44 (0) 1204 531957
Email: postmaster@edbro.com Web: www.edbro.com

Technical Specifications are subject to change without notice
Date Created/Updated: 21 May 2018
Refer www.edbro.com to confirm latest specification
All dimensions are in 'mm', unless otherwise stated

