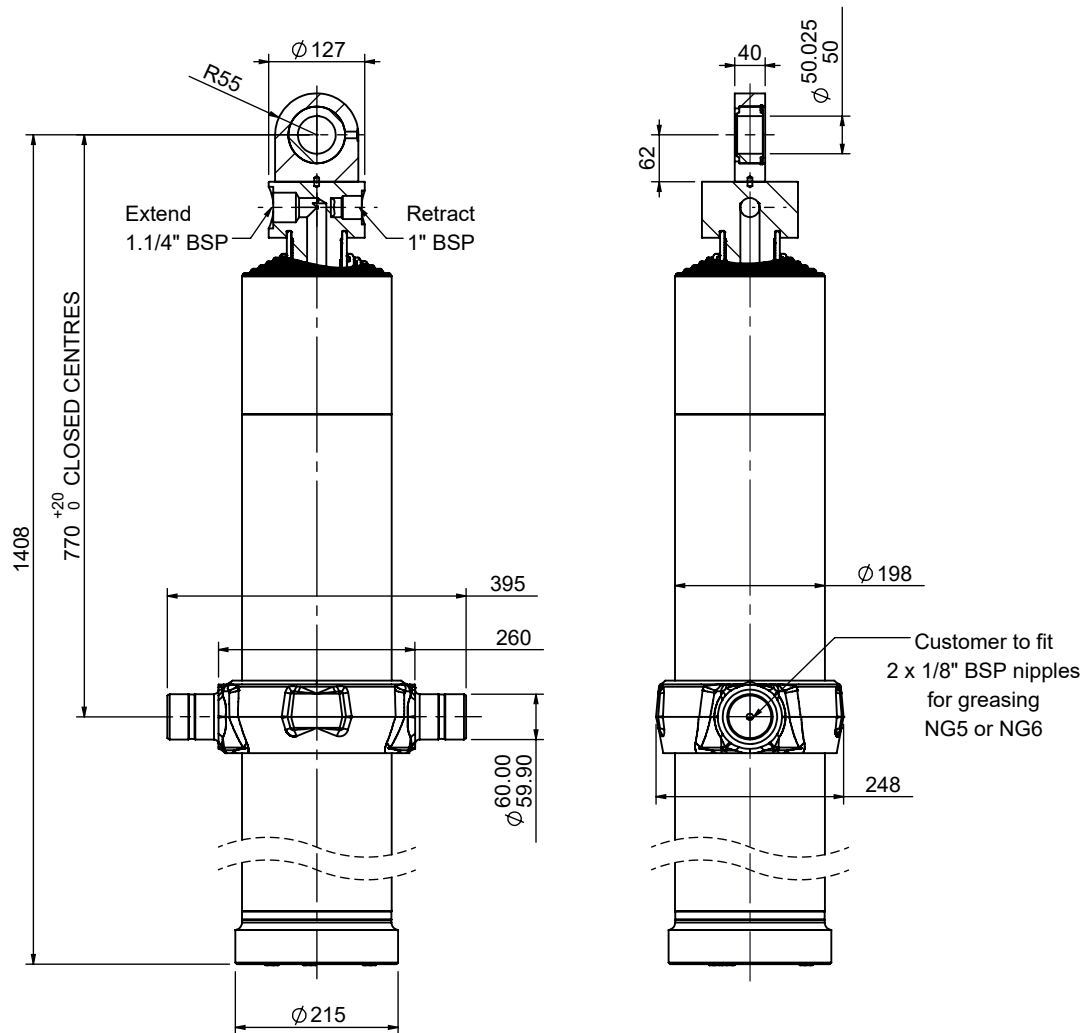


Cylinder 6 stage front end with spherical eye

CD17TS6005868NA10770



SPECIFICATION

Stage	Tube Diameter	Tube Bore	Length	Stroke	Swept Volume (Extend)	Swept Volume (Retract)
Base	198	184	1226	-	-	-
1	176	163	1192	953	25.3	2.2
2	155	144	1192	963	20.1	1.9
3	136	125	1192	973	15.8	1.7
4	117	106	1192	988	12.1	1.5
5	98	87	1192	993	8.8	1.3
6	79	71	1217	998	5.9	1.0
Total (+5/-10)				5868	mm	
Final stroke reduced by				0	mm	
Swept Vol (Extend)				88	Litres	
Swept Vol (Retract)				9.6	Litres	
Maximum Pressure				190	Bar	
Operating Pressure				190	Bar	
Cylinder Mass				203.19	Kg	
Stage	Thrust @ Max.Press		Thrust @ Op. Press			
	Extend	Retract	Extend	Retract		
1	51.5	4.4	51.5	4.4		
2	40.4	3.9	40.4	3.9		
3	31.5	3.4	31.5	3.4		
4	23.8	2.9	23.8	2.9		
5	17.1	2.5	17.1	2.5		
6	11.5	2.0	11.5	2.0		

NOTES

- This cylinder is intended for load ejection purposes only and should not be used for compacting.
- Cylinder is painted in primer to RAL5013.
- Refer to www.edbro.com for:-
 - Bracket details
 - Installation instructions that must be observed
 - Correct oil selection
 - An explanation of ejection capacity

INNER TUBES HARD CHROMED



EDBRO Ltd.
 Edbro House, Nelson Street, Bolton, England, BL3 2JJ
 Tel +44 (0) 1204 528888 Fax +44 (0) 1204 531957
 Email: sales@jost-world.com Web: www.edbro.com

Technical Specifications are subject to change without notice
 Date Created/Updated: 03 June 2021
 Refer www.edbro.com to confirm latest specification
 All dimensions are in 'mm', unless otherwise stated