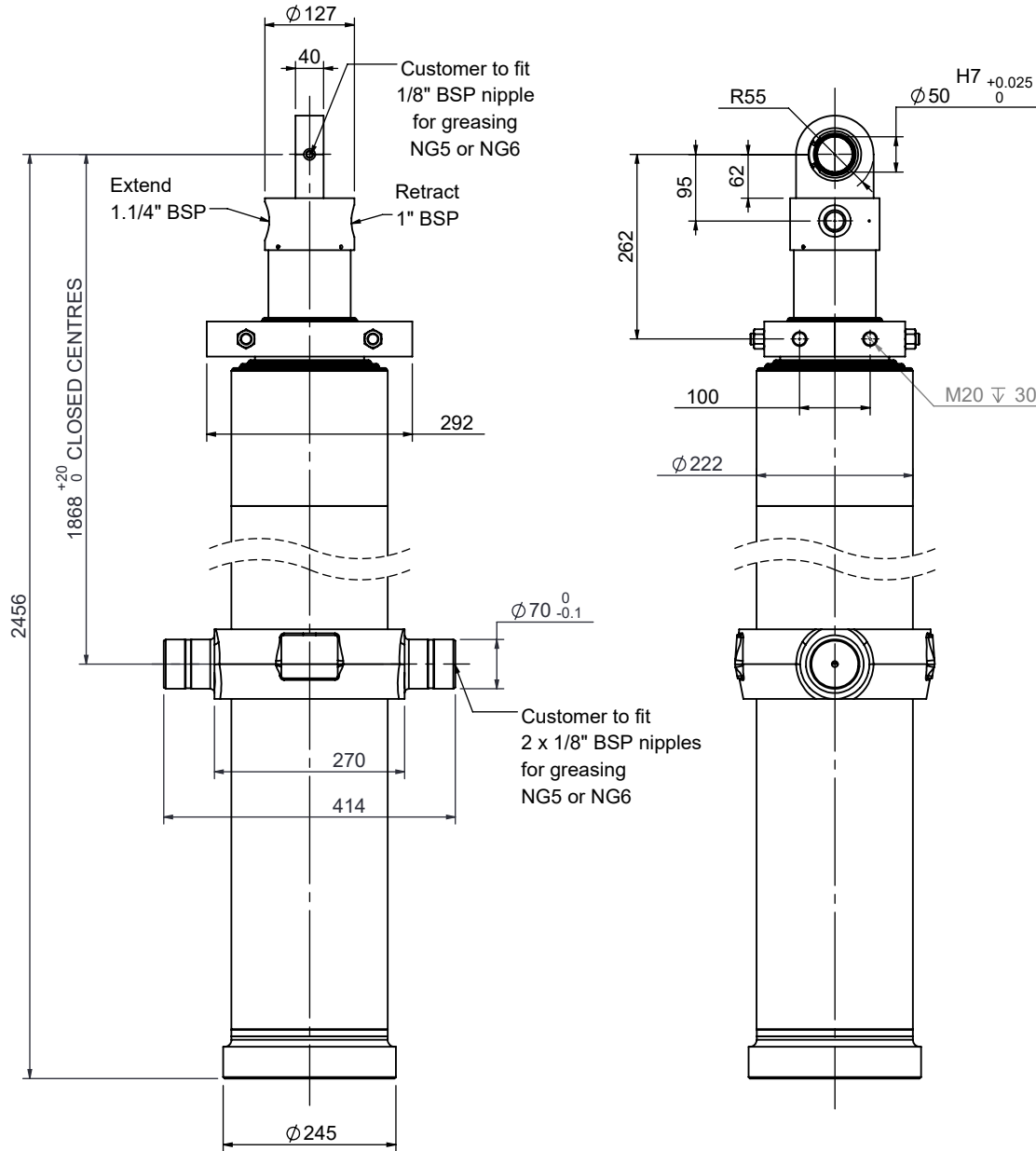


# Cylinder 5 stage with trunnion & spheric eye

CD19TS5309530BA41868



## SPECIFICATION

Stage	Tube Diameter	Tube Bore	Length	Stroke	Swept Volume (Extend)	Swept Volume (Retract)
Base	222	206	2153	-	-	-
1	198	184	2114	1865	62.2	4.7
2	176	163	2114	1875	49.9	4.2
3	155	144	2164	1885	39.3	3.8
4	136	125	2164	1945	31.7	3.4
5	116	106	2264	1960	24.1	3.3
Total (+5/-10)				9530	mm	
Final stroke reduced by				0	mm	
Swept Vol (Extend)				207.2	Litres	
Swept Vol (Retract)				19.4	Litres	
Maximum Pressure				190	Bar	
Operating Pressure				175	Bar	
Cylinder Mass				404	Kg	
Stage	Thrust @ Max.Press.		Thrust @ Op. Press			
	Extend	Retract	Extend	Retract		
1	64.6	4.9	59.5	4.5		
2	51.5	4.4	47.4	4.0		
3	40.4	3.9	37.2	3.6		
4	31.5	3.4	29.1	3.1		
5	23.8	3.3	21.9	3.0		

- This cylinder is intended for load ejection purposes only and should not be used for compacting.
- Cylinder is painted in primer to RAL5013.
- Refer to [www.edbro.com](http://www.edbro.com) for:-
  - Bracket details
  - Installation instructions that must be observed
  - Correct oil selection
  - An explanation of ejection capacity

INNER TUBES HARD CHROMED



**Edbro**  
 Edbro House, Nelson Street, Bolton, England, BL3 2JJ  
 Tel +44 (0) 1204 528888 Fax +44 (0) 1204 531957  
 Email: [sales@edbro.com](mailto:sales@edbro.com) Web: [www.edbro.com](http://www.edbro.com)

Technical Specifications are subject to change without notice  
 Date Created/Updated: 15 June 2021  
 Refer [www.edbro.com](http://www.edbro.com) to confirm latest specification  
 All dimensions are in 'mm', unless otherwise stated