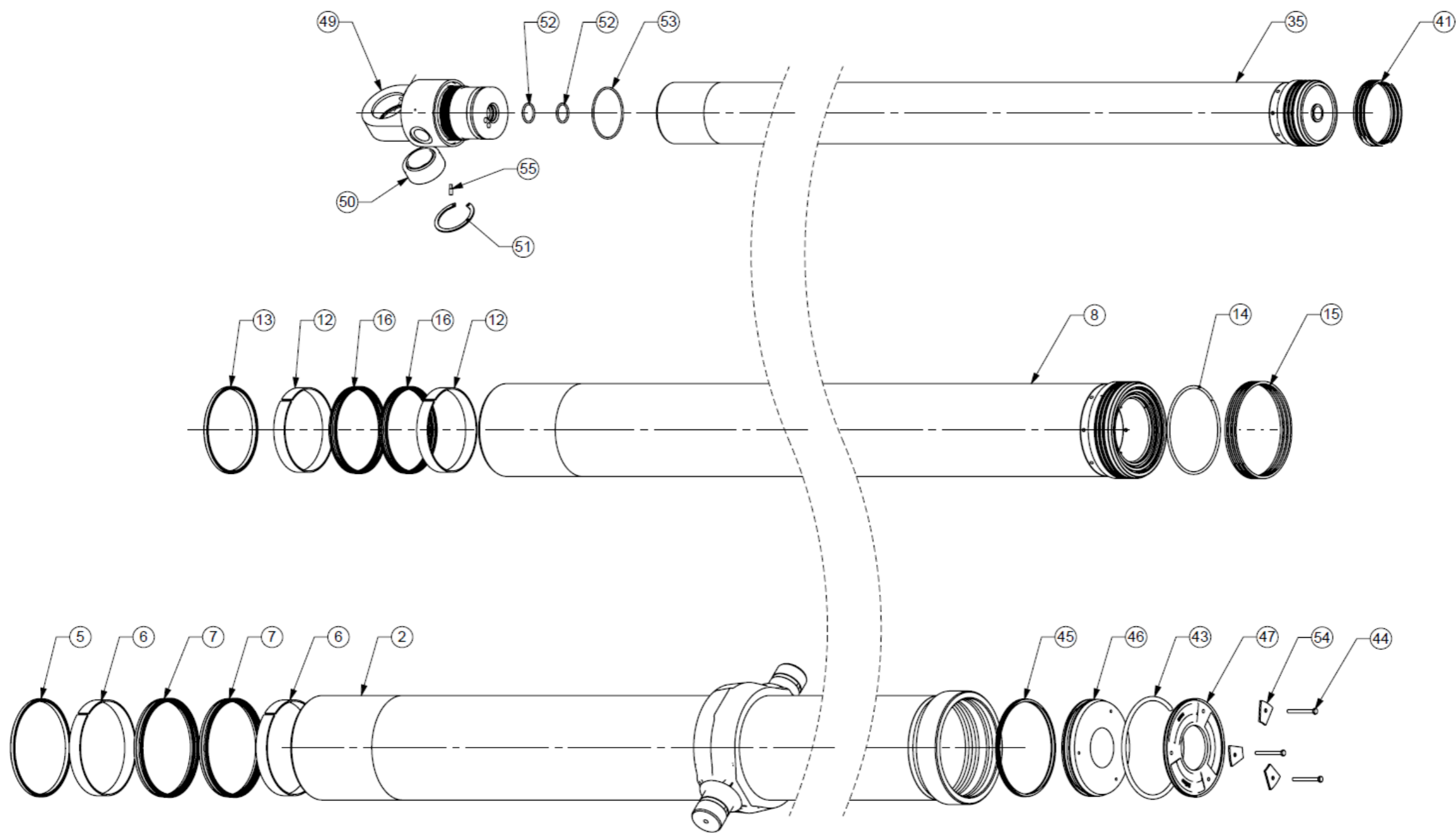


# Spare Parts Diagram for Cylinder CD19TS6007151BA21476



Note: Edbro recommends that bearing strips are renewed when seals are replaced.

| Tubes   |         |                 |                 |                 |                 |                 |                 |  |
|---|---------|-----------------|-----------------|-----------------|-----------------|-----------------|-----------------|--|
| Description   | Ref     |                 |                 |                 |                 |                 |                 |  |
| Base Tube   | 2       | 747BB2681454    |                 |                 |                 |                 |                 |  |
| Inters  |         | Stage 1 (198mm) | Stage 2 (176mm) | Stage 3 (155mm) | Stage 4 (136mm) | Stage 5 (117mm) |                 |  |
|   | 8       | 766C8011415     | 766D8011415     | 766E8011415     | 766F8011415     | 766G8011415     |                 |  |
| Small Inner   | 35      | 778H8011465     |                 |                 |                 |                 |                 |  |
| Seal Kit SKPCD196 (SEALS SOLD AS KIT ONLY - INDIVIDUAL PARTS ARE UNAVAILABLE) |         |                 |                 |                 |                 |                 |                 |  |
| Description   | Ref     | Base Tube       | Stage 1 (198mm) | Stage 2 (176mm) | Stage 3 (155mm) | Stage 4 (136mm) | Stage 5 (117mm) |  |
| Wiper Seal  | 5 & 13  | EWM198/01       | EWM176/01       | EWM155/01       | EWM136/01       | EWM117/01       | EWM98/01        |  |
| Bearing Strip   | 6 & 12  | BRH198/04/LF    | BRH176/04/LF    | BRH155/04/LF    | BRH136/04/LF    | BRH117/04/LF    | BRH98/04/LF     |  |
| Main Seal   | 7 & 16  | SAM198/03       | SAM176/03       | SAM155/03       | SAM136/03       | SAM117/03       | SAM98/03        |  |
| Snap Ring   | 14 & 43 | SRM206/02       | SRM184/01       | SRM163/01       | SRM144/01       | SRM125/01       | SRM106/01       |  |
| Base Pad Seal   | 45      | SAM206/01       |                 |                 |                 |                 |                 |  |
| Piston Rings  |         |                 |                 |                 |                 |                 |                 |  |
| Description   | Ref     | Stage 1 (198mm) | Stage 2 (176mm) | Stage 3 (155mm) | Stage 4 (136mm) | Stage 5 (117mm) | Small Inner     |  |
| Piston Rings x 3  | 15 & 41 | CPRM206/01      | CPRM185/01      | CPRM163/01      | CPRM144/01      | CPRM125/01      | CPRM106/01      |  |
| Base Pad Components   |         |                 |                 |                 |                 |                 |                 |  |
| Environment Cap   | 47      | EC543           |                 |                 |                 |                 |                 |  |
| Base Pad  | 46      | RBM222/03       |                 |                 |                 |                 |                 |  |
| Segment Washer  | 54      | SP4006          |                 |                 |                 |                 |                 |  |
| Screw   | 44      | KS218/M6/20/ZP  |                 |                 |                 |                 |                 |  |
| Crosshead Components  |         |                 |                 |                 |                 |                 |                 |  |
| Crosshead   | 49      | RCE98/27FAB     |                 |                 |                 |                 |                 |  |
| Lock Screws x 2   | 55      | KE73            |                 |                 |                 |                 |                 |  |
| Pressure Seal   | 53      | OR529LN         |                 |                 |                 |                 |                 |  |
| Feedtube Seal   | 52      | OR19            |                 |                 |                 |                 |                 |  |
| Bearing   | 50      | BJ37            |                 |                 |                 |                 |                 |  |
| Circlip   | 51      | PS149/75        |                 |                 |                 |                 |                 |  |



**JOST UK Ltd.**  
 Edbro House, Nelson Street, Bolton, England, BL3 2JJ, UK  
 Tel +44 (0) 1204 528888 Fax +44 (0) 1204 531957  
 Email: postmaster@edbro.com Web: www.edbro.com

Technical Specifications are subject to change without notice  
 Date Created/Updated: 18/02/19  
 Refer www.edbro.com to confirm latest specification  
 All dimensions are in mm, unless otherwise stated