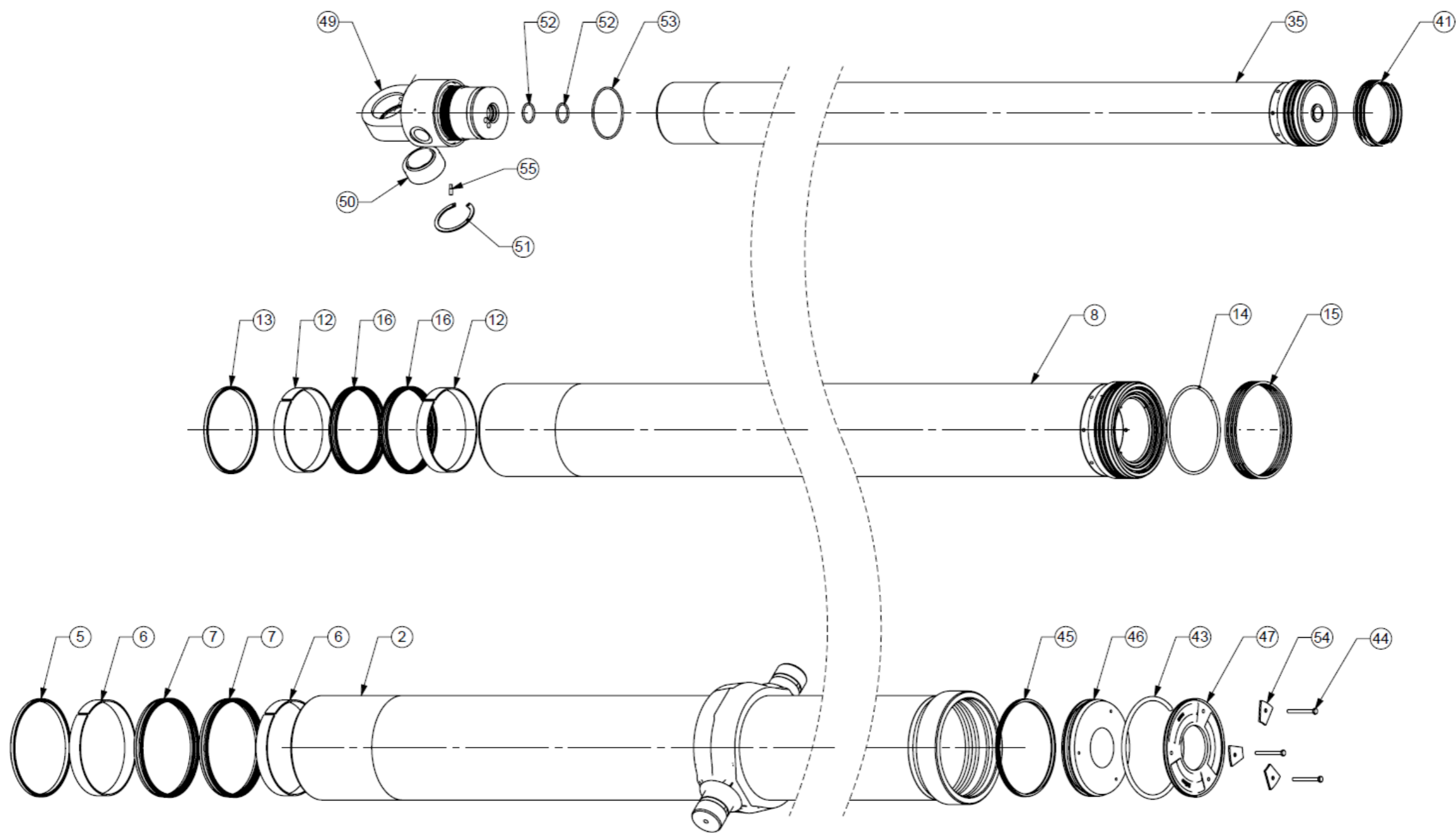


Spare Parts Diagram for Cylinder CD19TS6007151NA21476



Note: Edbro recommends that bearing strips are renewed when seals are replaced.

Tubes								
Description	Ref							
Base Tube	2	747BB2681454						
Inters		Stage 1 (198mm)	Stage 2 (176mm)	Stage 3 (155mm)	Stage 4 (136mm)	Stage 5 (117mm)		
	8	766C8011415	766D8011415	766E8011415	766F8011415	766G8011415		
Small Inner	35	778H8011465						
Seal Kit SKPCD196 (SEALS SOLD AS KIT ONLY - INDIVIDUAL PARTS ARE UNAVAILABLE)								
Description	Ref	Base Tube	Stage 1 (198mm)	Stage 2 (176mm)	Stage 3 (155mm)	Stage 4 (136mm)	Stage 5 (117mm)	
Wiper Seal	5 & 13	EWM198/01	EWM176/01	EWM155/01	EWM136/01	EWM117/01	EWM98/01	
Bearing Strip	6 & 12	BRH198/04/LF	BRH176/04/LF	BRH155/04/LF	BRH136/04/LF	BRH117/04/LF	BRH98/04/LF	
Main Seal	7 & 16	SAM198/03	SAM176/03	SAM155/03	SAM136/03	SAM117/03	SAM98/03	
Snap Ring	14 & 43	SRM206/02	SRM184/01	SRM163/01	SRM144/01	SRM125/01	SRM106/01	
Base Pad Seal	45	SAM206/01						
Piston Rings								
Description	Ref	Stage 1 (198mm)	Stage 2 (176mm)	Stage 3 (155mm)	Stage 4 (136mm)	Stage 5 (117mm)	Small Inner	
Piston Rings x 3	15 & 41	CPRM206/01	CPRM185/01	CPRM163/01	CPRM144/01	CPRM125/01	CPRM106/01	
Base Pad Components								
Environment Cap	47	EC543						
Base Pad	46	RBM222/03						
Segment Washer	54	SP4006						
Screw	44	KS218/M6/20/ZP						
Crosshead Components								
Crosshead	49	RCE98/28FAB						
Lock Screws x 2	55	KE73						
Pressure Seal	53	OR529LN						
Feedtube Seal	52	OR19						
Bearing	50	BJ37						
Circlip	51	PS149/75						



JOST UK Ltd.
 Edbro House, Nelson Street, Bolton, England, BL3 2JJ, UK
 Tel +44 (0) 1204 528888 Fax +44 (0) 1204 531957
 Email: postmaster@edbro.com Web: www.edbro.com

Technical Specifications are subject to change without notice
 Date Created/Updated: 18/02/19
 Refer www.edbro.com to confirm latest specification
 All dimensions are in mm, unless otherwise stated