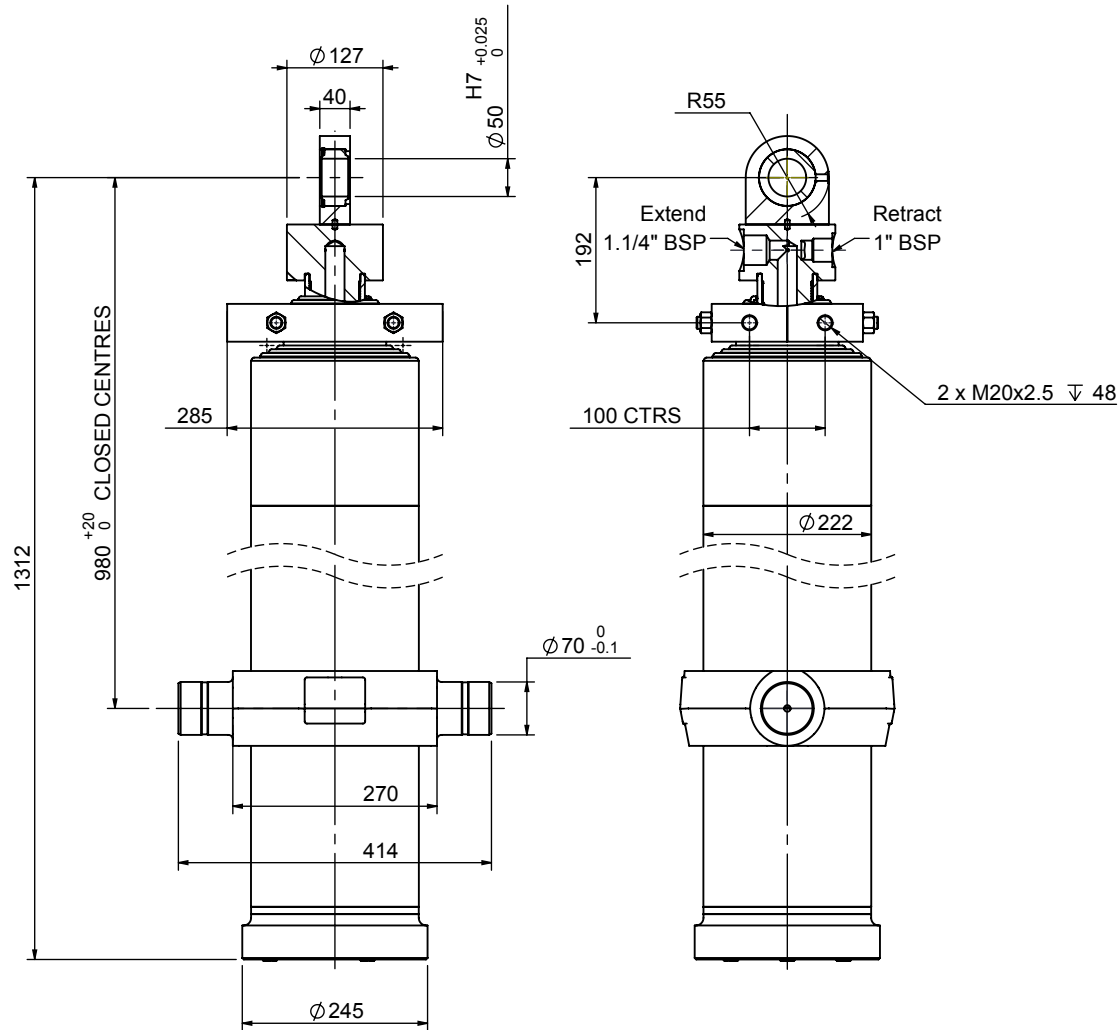


Cylinder 7 stage front end with spherical eye

CD19TS7405862NA10980



SPECIFICATION

Stage	Tube Diameter	Tube Bore	Length	Stroke	Swept Volume (Extend)	Swept Volume (Retract)
Base	222	207	1074	-	-	-
1	198	184	1035	786	26.5	2.8
2	176	163	1035	796	21.2	1.8
3	155	144	1035	806	16.8	1.6
4	136	125	1085	816	13.3	1.4
5	117	106	1085	881	10.8	1.3
6	98	87	1085	886	7.8	1.1
7	79	71	1110	891	7.2	1.2

Total (+5/-10)

5862 mm

Final stroke reduced by

0 mm

Swept Vol (Extend)

103.6 Litres

Swept Vol (Retract)

11.2 Litres

Maximum Pressure

190 Bar

Operating Pressure

150 Bar

Cylinder Mass

253 Kg

Stage	Thrust @ Max.Press		Thrust @ Op. Press	
	Extend	Retract	Extend	Retract
1	65.2	5.5	51.5	4.4
2	51.5	4.4	40.7	3.5
3	40.4	3.9	31.9	3.9
4	31.5	3.4	31.5	2.7
5	23.8	2.9	18.8	2.3
6	17.1	2.5	13.5	2.0
7	11.5	2.0	9.1	1.6

NOTES

- This cylinder is intended for load ejection purposes only and should not be used for compacting.
- Cylinder is painted in primer to RAL5013.
- Refer to www.edbro.com for:-
 - Bracket details
 - Installation instructions that must be observed
 - Correct oil selection
 - An explanation of ejection capacity

INNER TUBES HARD CHROMED



JOST UK Ltd
 Edbro House, Nelson Street, Bolton, England, BL3 2JJ
 Tel +44 (0) 1204 528888 Fax +44 (0) 1204 531957
 Email: sales@jost-world.com Web: www.edbro.com

Technical Specifications are subject to change without notice
 Date Created/Updated: 26 January 2021
 Refer www.edbro.com to confirm latest specification
 All dimensions are in 'mm', unless otherwise stated