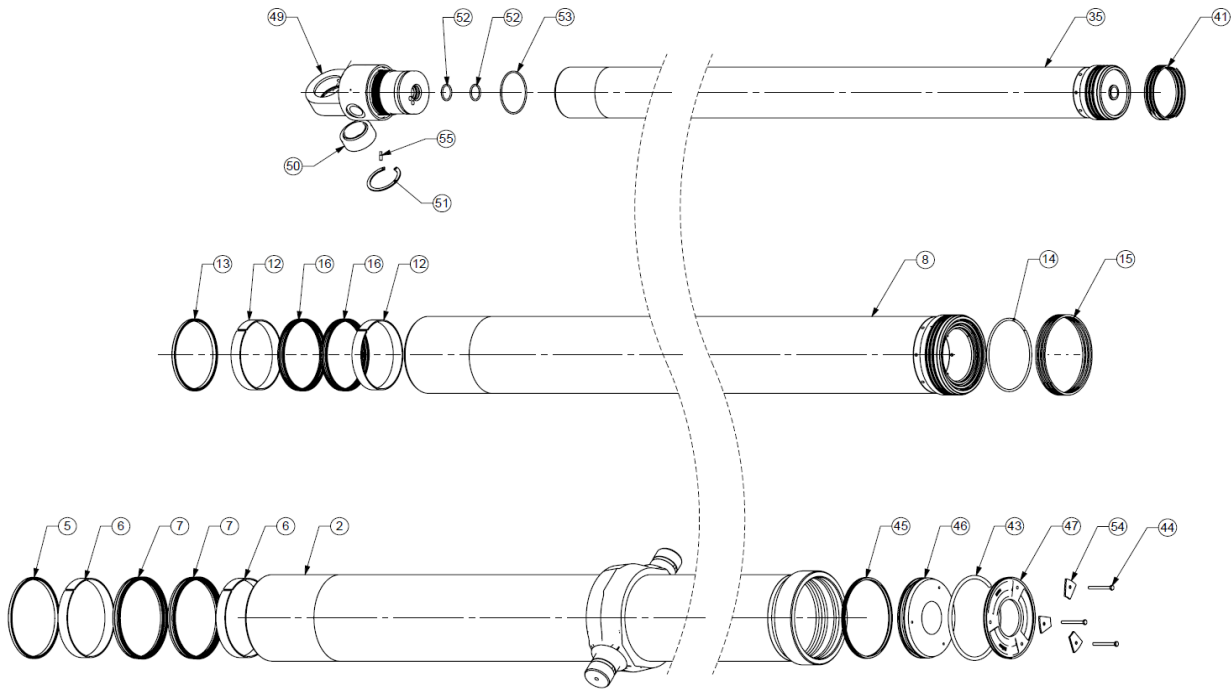


Spare Parts Diagram for Cylinder CD22TS708986BA10826



Note: Edbro recommends that bearing strips are renewed when seals are replaced.

Tubes									
Description	Ref								
Base Tube	2	747AA5961529							
Inters		Stage 1 (222mm)	Stage 2 (198mm)	Stage 3 (176mm)	Stage 4 (155mm)	Stage 5 (136mm)	Stage 6 (117mm)		
	8	766B8011490	766C8011490	766D8011490	766E8021540	766F8011540	766G8011540		
Small Inner	35	778H8011565							
Seal Kit SKPCD227 (SEALS SOLD AS KIT ONLY - INDIVIDUAL PARTS ARE UNAVAILABLE)									
Description	Ref	Base Tube	Stage 1 (222mm)	Stage 2 (198mm)	Stage 3 (176mm)	Stage 4 (155mm)	Stage 5 (136mm)	Stage 6 (117mm)	
Wiper Seal	5 & 13	EWM222/01	EWM198/01	EWM176/01	EWM155/01	EWM136/01	EWM117/01	EWM98/01	
Bearing Strip	6 & 12	BRH222/04/LF	BRH198/04/LF	BRH176/04/LF	BRH155/04/LF	BRH136/04/LF	BRH117/04/LF	BRH98/04/LF	
Main Seal	7 & 16	SAM222/03	SAM198/03	SAM176/03	SAM155/03	SAM136/03	SAM117/03	SAM98/03	
Snap Ring	14 & 43	SRM230/02	SRM206/01	SRM184/01	SRM163/01	SRM144/01	SRM125/01	SRM106/01	
Base Pad Seal	45	SAM230/01							
Piston Rings Kit CPRK227									
Description	Ref	Stage 1 (222mm)	Stage 2 (198mm)	Stage 3 (176mm)	Stage 4 (155mm)	Stage 5 (136mm)	Stage 6 (117mm)	Small Inner	
Piston Rings x 3	15 & 41	CPRM230/01	CPRM206/01	CPRM185/01	CPRM163/01	CPRM144/01	CPRM125/01	CPRM106/01	
Base Pad Components									
Environment Cap	47	EC542							
Base Pad	46	RBM250/01							
Segment Washer	54	SP4006							
Screw	44	KS218/M6/20/ZP							
Crosshead Components									
Crosshead	49	RCE98/27FAB							
Lock Screws x 2	55	KE73							
Pressure Seal	53	OR529LN							
Feedtube Seal	52	OR19							
Bearing	50	BJ37							
Circlip	51	PS149/75							