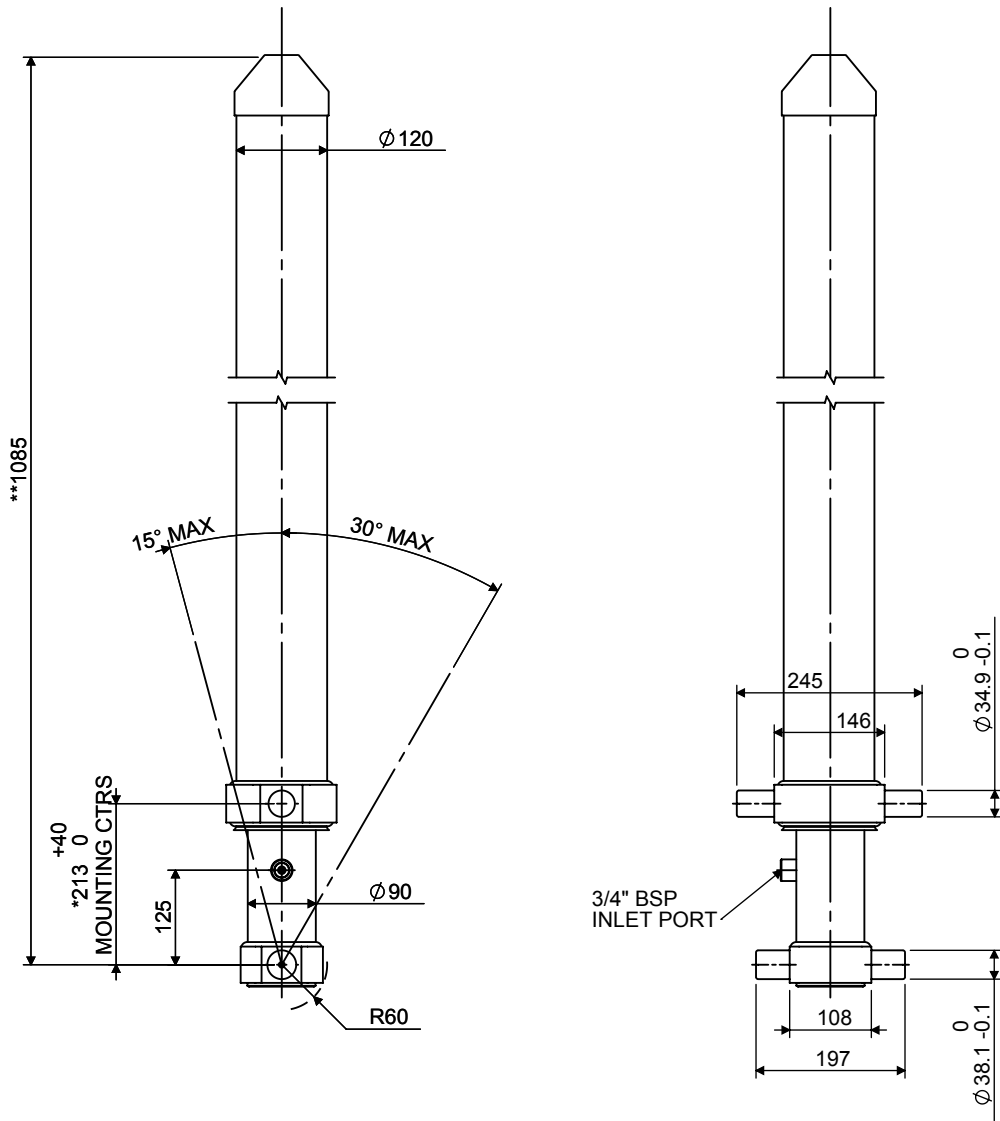


# Cylinder 3 stage front end with outer cover

**\*\*ALLOW 50mm TO REMOVE CAP FOR SERVICING**

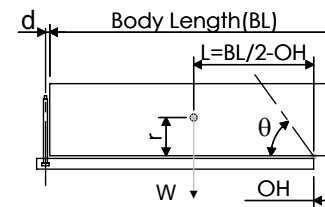


\*Includes 10mm Pull Out.

# CS070032355N12A28

SPECIFICATION		TIPPING CAPACITY : 7-11 TONNES***		
Stage	Diameter	Length	Stroke	Swept Volume
-	-	-	-	-
-	-	-	-	-
OUTER COVER	120	861	-	-
0	90	987	-	-
1	75	957	782	3
2	60	958	783	2
3	45	980	790	1
Total (+5/-10)			2355	6
Final stroke reduced by	0	Priming Volume		1
Cylinder Mass (Kg)	52	Total Volume (Litres)		7
Maximum Pressure (Bar)	175	Max. first stage thrust		40 KN

## \*\*\*TIPPING CAPACITY AT WORKING PRESSURE



BODY LENGTH (BL)						OH
3250		3450		3650		
7	43°	7	40°			150
10	48°	9	44°	8	42°	450
				11	46°	750

d = 111; r = 500; Working Pressure 150 bar

Tipping angle ( $\theta$ )  
Body + payload mass, W (tonne)

### For guidance only;

Higher working pressures and tipping capacities may be possible.  
To check your application email - [applications@edbro.co.uk](mailto:applications@edbro.co.uk)

### NOTES

1. This cylinder is for lifting purposes only and side load conditions should be avoided
2. Cylinder is painted in primer paint to RAL5013
3. Refer to [www.edbro.com](http://www.edbro.com) for:-
  - Bracket details
  - Installation instructions that must be observed
  - Correct oil selection
  - An explanation of tipping capacity