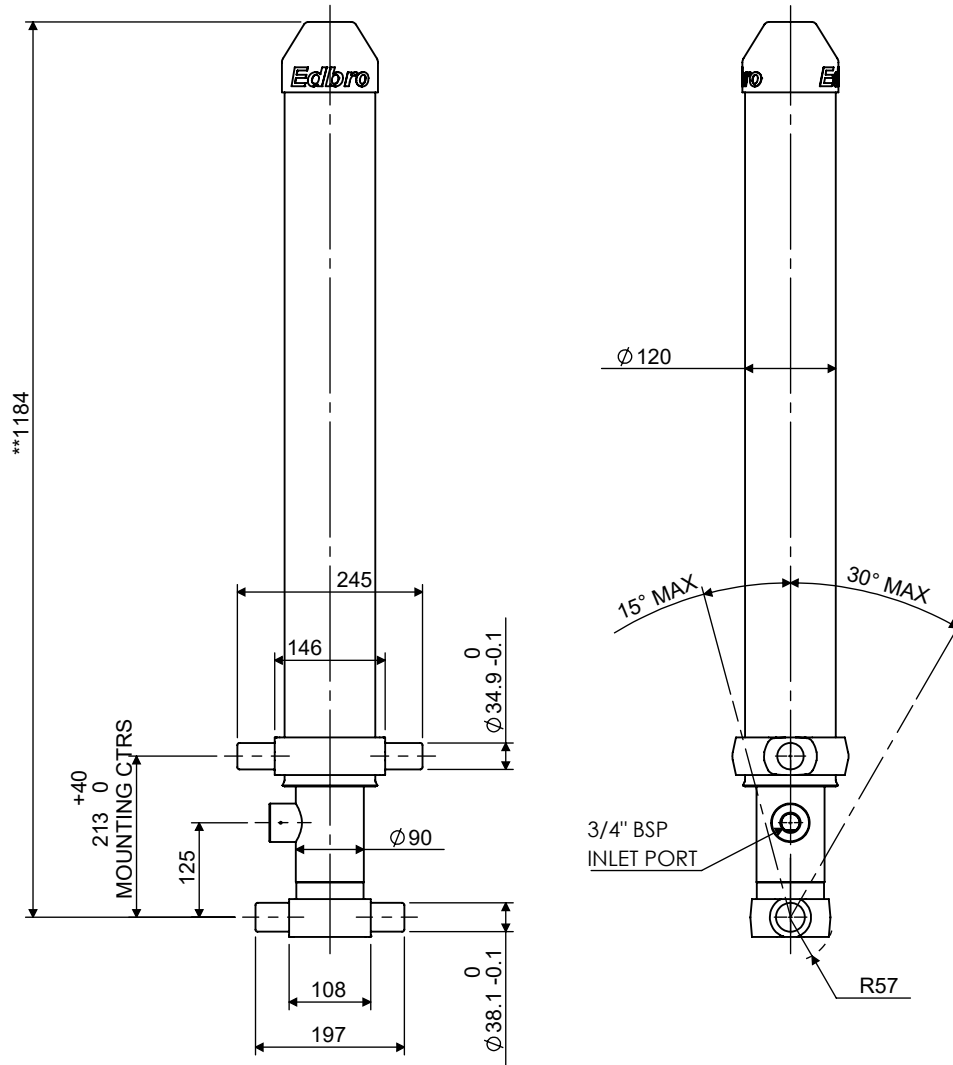


# Cylinder 3 stage front end with outer cover

**\*\*ALLOW 50mm TO REMOVE CAP FOR SERVICING**

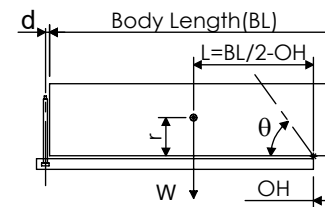


**\*Includes 10mm Pull Out.**

# CS070032595N12A28E-503

| SPECIFICATION           |          | TIPPING CAPACITY : 7-10 TONNES*** |        |              |
|-------------------------|----------|-----------------------------------|--------|--------------|
| Stage                   | Diameter | Length                            | Stroke | Swept Volume |
| -                       | -        | -                                 | -      | -            |
| -                       | -        | -                                 | -      | -            |
| OUTER COVER             | 120      | 939                               | -      | -            |
| 0                       | 90       | 1072                              | -      | -            |
| 1                       | 75       | 1045                              | 860    | 4            |
| 2                       | 60       | 1045                              | 868    | 2            |
| 3                       | 45       | 1045                              | 868    | 1            |
|                         |          | Total (+5/-10)                    | 2596   | 7            |
| Final stroke reduced by | 0        | Priming Volume                    |        | 1            |
| Cylinder Mass (Kg)      | 56       | Total Volume (Litres)             |        | 8            |
| Maximum Pressure (Bar)  | 175      | Max. first stage thrust           |        | 40 KN        |

### \*\*\*TIPPING CAPACITY AT WORKING PRESSURE



| BODY LENGTH (BL) |     |      |     |      |     | OH  |
|------------------|-----|------|-----|------|-----|-----|
| 3500             |     | 3700 |     | 3900 |     |     |
| 7                | 44° | 7    | 42° |      |     | 150 |
| 9                | 48° | 8    | 45° | 8    | 43° | 450 |
|                  |     |      |     | 10   | 47° | 750 |

d = 111; r = 500; Working Pressure 150 bar

Tipping angle (θ)  
Body + payload mass, W (tonne)

### For guidance only;

Higher working pressures and tipping capacities may be possible.  
To check your application email - [applications@edbro.co.uk](mailto:applications@edbro.co.uk)

### NOTES

1. This cylinder is for lifting purposes only and side load conditions should be avoided
2. Cylinder is painted in Jet Black Gloss to RAL9005
3. Refer to [www.edbro.com](http://www.edbro.com) for:-
  - Bracket details
  - Installation instructions that must be observed
  - Correct oil selection
  - An explanation of tipping capacity



**JOST UK Ltd**  
Edbro House, Nelson Street, Bolton, England, BL3 2JJ  
Tel +44 (0) 1204 528888 Fax +44 (0) 1204 531957  
Email: [sales@jost-world.com](mailto:sales@jost-world.com) Web: [www.edbro.com](http://www.edbro.com)

Technical Specifications are subject to change without notice  
Date Created/Updated: 10 February 2021  
Refer [www.edbro.com](http://www.edbro.com) to confirm latest specification  
All dimensions are in 'mm', unless otherwise stated