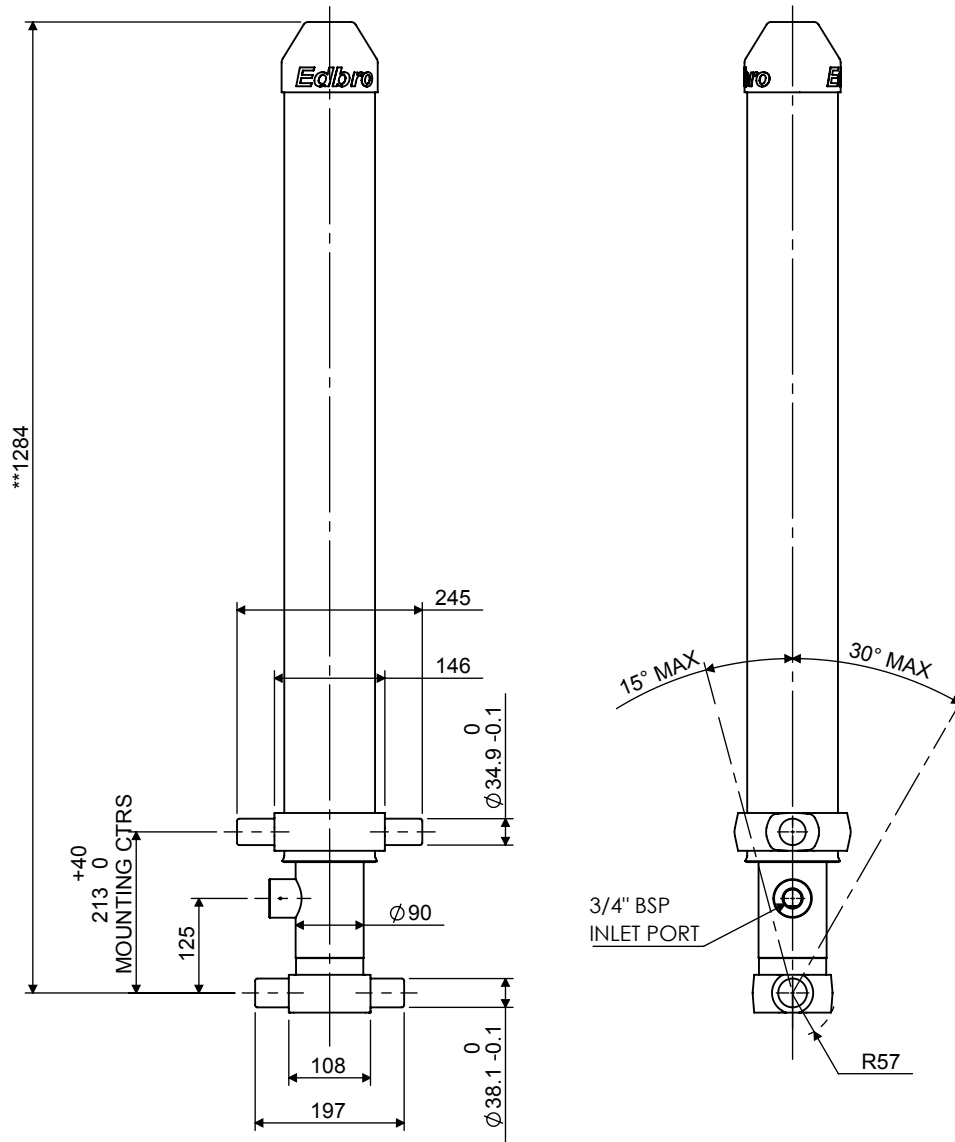


# Cylinder 3 stage front end with outer cover

**\*\*ALLOW 50mm TO REMOVE CAP FOR SERVICING**

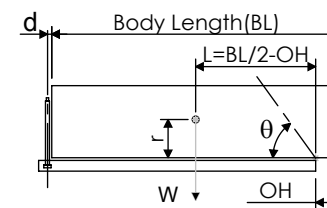


**\*Includes 10mm Pull Out.**

# CS070032895N12A28E

SPECIFICATION		TIPPING CAPACITY : 7-11 TONNES***		
Stage	Diameter	Length	Stroke	Swept Volume
-	-	-	-	-
-	-	-	-	-
OUTER COVER	120	1039	-	-
0	90	1172	-	-
1	75	1145	958	4
2	60	1145	968	3
3	45	1145	968	2
			Total (+5/-10)	2894
Final stroke reduced by	0	Priming Volume		1
Cylinder Mass (Kg)	61	Total Volume (Litres)		10
Maximum Pressure (Bar)	150	Max. first stage thrust		40 KN

### \*\*\*TIPPING CAPACITY AT WORKING PRESSURE



BODY LENGTH (BL)						OH
3750		4000		4250		
7	46°	7	43°			150
9	50°	8	47°	8	43°	450
		11	51°	10	47°	750

d = 111; r = 500; Working Pressure 150 bar

Tipping angle ( $\theta$ )  
Body + payload mass, W (tonne)

### For guidance only;

Higher working pressures and tipping capacities may be possible.  
To check your application email - [applications@edbro.co.uk](mailto:applications@edbro.co.uk)

### NOTES

1. This cylinder is for lifting purposes only and side load conditions should be avoided
2. Cylinder is painted in primer paint to RAL5013
3. Refer to [www.edbro.com](http://www.edbro.com) for:-
  - Bracket details
  - Installation instructions that must be observed
  - Correct oil selection
  - An explanation of tipping capacity



**JOST UK Ltd**  
Edbro House, Nelson Street, Bolton, England, BL3 2JJ  
Tel +44 (0) 1204 528888 Fax +44 (0) 1204 531957  
Email: [sales@jost-world.com](mailto:sales@jost-world.com) Web: [www.edbro.com](http://www.edbro.com)

Technical Specifications are subject to change without notice  
Date Created/Updated: 12 November 2020  
Refer [www.edbro.com](http://www.edbro.com) to confirm latest specification  
All dimensions are in 'mm', unless otherwise stated