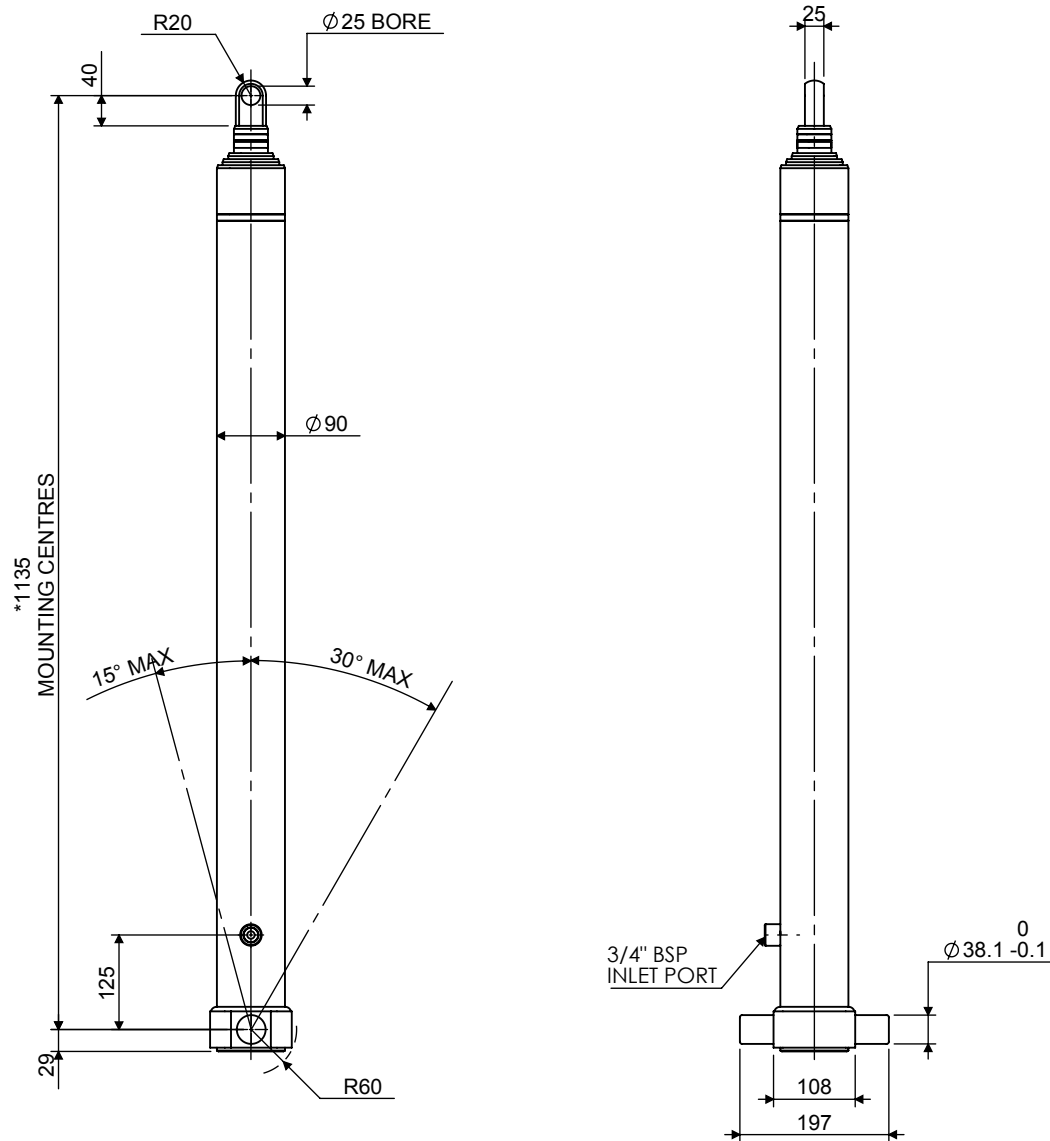


Cylinder 3 stage front end with plain eye

CS070E32595N12A02

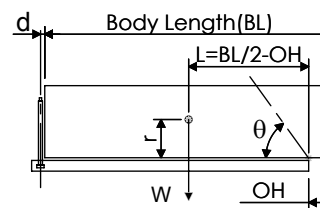


***Includes 10mm Pull Out.
Last Stage Chrome Plated**

SPECIFICATION

SPECIFICATION		TIPPING CAPACITY : 7 - 11 TONNES***		
Stage	Diameter	Length	Stroke	Swept Volume
-	-	-	-	-
-	-	-	-	-
-	-	-	-	-
0	90	1067	-	-
1	75	1037	862	4
2	60	1038	863	2
3	45	1060	870	1
Total (+5/-10)			2595	7
Final stroke reduced by	0	Priming Volume		2
Cylinder Mass (Kg)	44	Total Volume (Litres)		9
Maximum Pressure (Bar)	175	Max. first stage thrust		40 KN

***TIPPING CAPACITY AT WORKING PRESSURE



BODY LENGTH (BL)				OH
3500	3700	3900		
7	46°	7	43°	150
9	51°	8	48°	450
		11	53°	750

d = 0; r = 500; Working Pressure 150 bar

For guidance only;
Higher working pressures and tipping capacities may be possible.
To check your application email - applications@edbro.co.uk

NOTES

- This cylinder is for lifting purposes only and side load conditions should be avoided
- Cylinder is painted in primer paint to RAL5013
- Refer to www.edbro.com for:-
 - Bracket details
 - Installation instructions that must be observed
 - Correct oil selection
 - An explanation of tipping capacity
- Ø25 top pin must be EN10025 S355 steel minimum