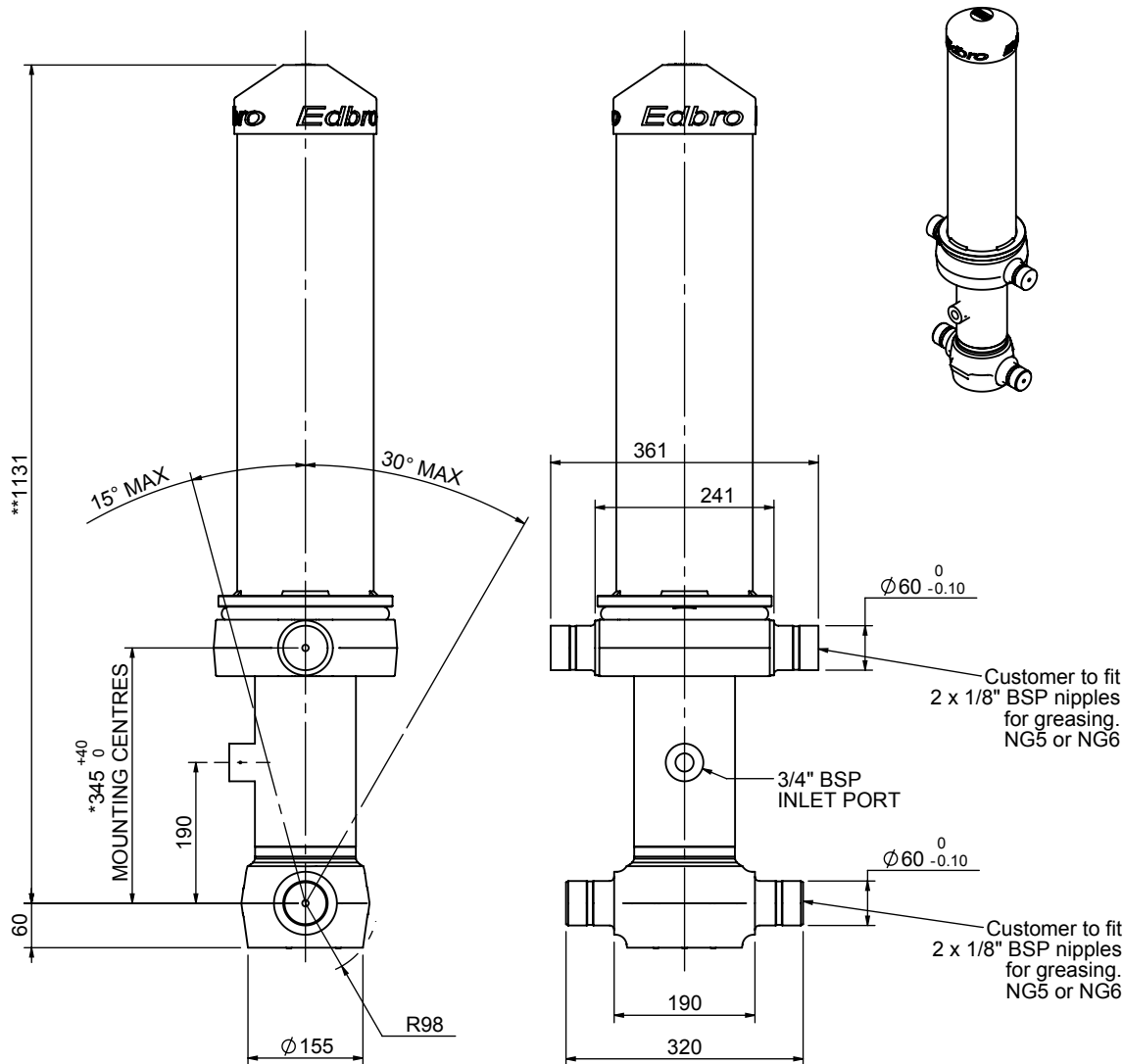


Cylinder 3 stage front end with outer cover

****ALLOW 50mm TO REMOVE CAP FOR SERVICING**

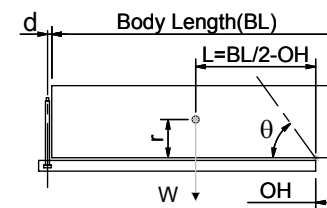


*Includes 14mm Pull Out.

CS110032594B19A11

SPECIFICATION		TIPPING CAPACITY : 18-36 TONNES***		
Stage	Diameter	Length	Stroke	Swept Volume
-	-	-	-	-
-	-	-	-	-
Outer Cover	184	735	-	-
0	136	1075	-	-
1	117	1040	849	9
2	98	1040	867	7
3	79	1040	872	4
Total (+5/-10)			2588	20
Final stroke reduced by	0	Priming Volume		8
Cylinder Mass (Kg)	99	Total Volume (Litres)		28
Maximum Pressure (Bar)	190	Max. first stage thrust		130 KN

***TIPPING CAPACITY AT WORKING PRESSURE



		BODY LENGTH (BL)				OH
		3500	3550	3600		
18	43°	18	43°			150
24	48°	23	47°	23	46°	450
36	53°	34	52°	33	51°	750

$d = 178$; $r = 750$; Working Pressure 120 bar

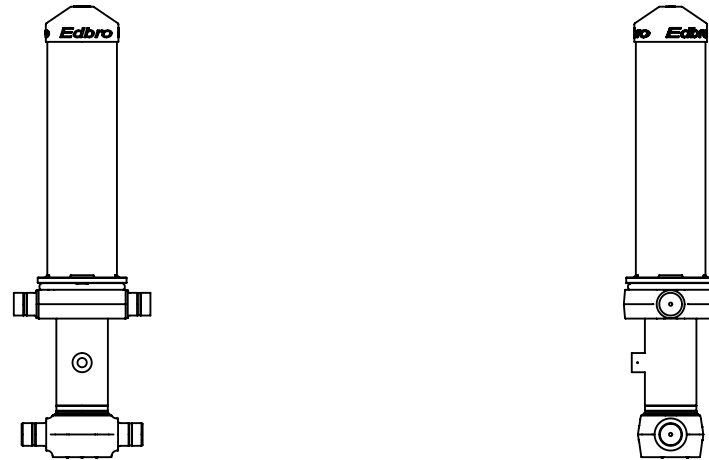
Tipping angle (θ)
Body + payload mass, W (tonne)

For guidance only;

Higher working pressures and tipping capacities may be possible.
To check your application email - applications@edbro.co.uk

NOTES

1. This cylinder is for lifting purposes only and side load conditions should be avoided
2. Cylinder is painted in primer paint to RAL5013
3. Refer to www.edbro.com for;-
 - Bracket details
 - Installation instructions that must be observed
 - Correct oil selection
 - An explanation of tipping capacity



CS110032594B19A11