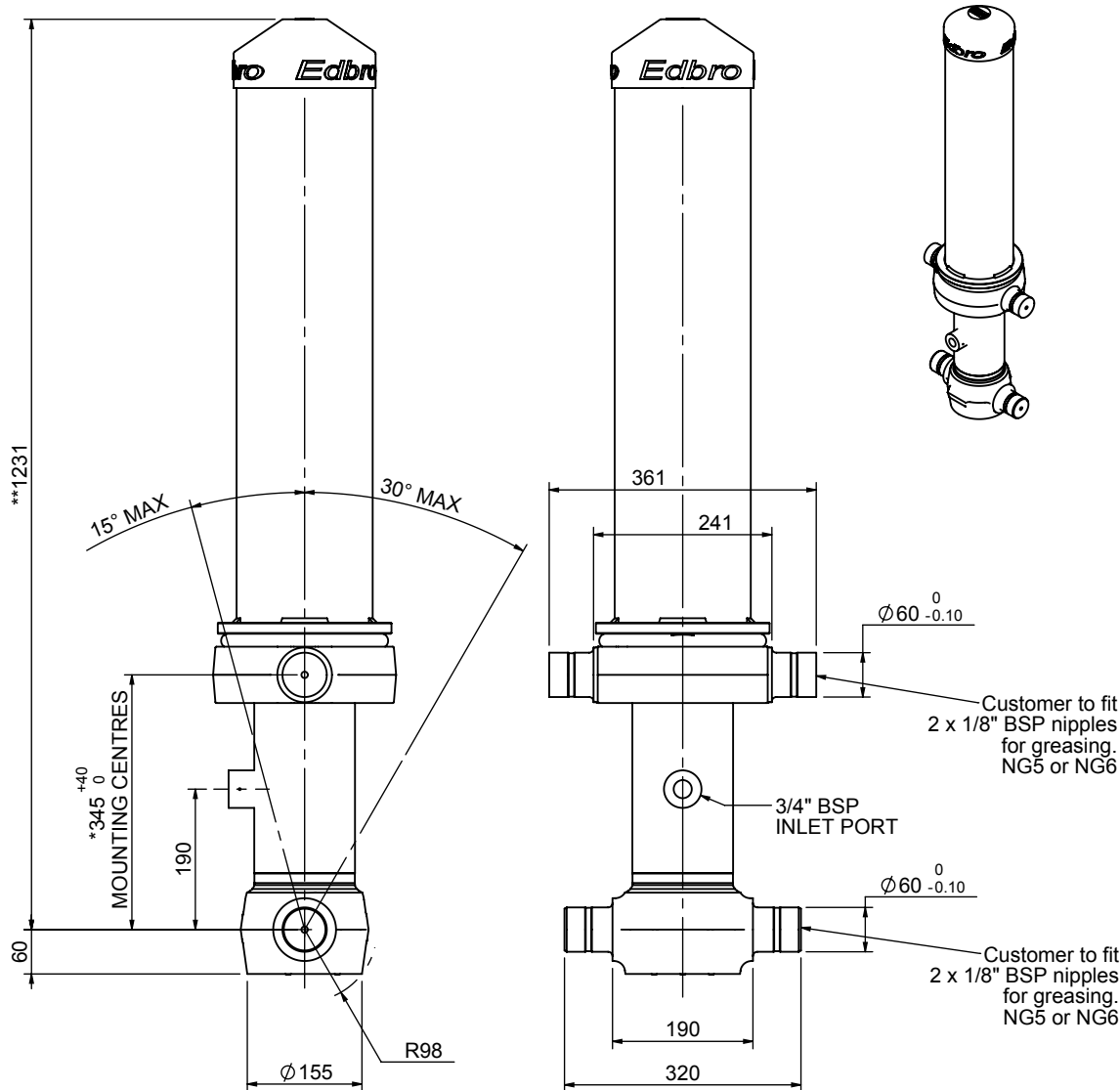


Cylinder 3 stage front end with outer cover

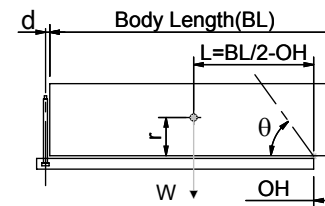
****ALLOW 50mm TO REMOVE CAP FOR SERVICING**



CS110032894B19A11

SPECIFICATION		TIPPING CAPACITY : 17-39 TONNES***		
Stage	Diameter	Length	Stroke	Swept Volume
-	-	-	-	-
-	-	-	-	-
Outer Cover	184	835	-	-
0	136	1175	-	-
1	117	1140	949	10
2	98	1140	967	7
3	79	1140	972	5
Total (+5/-10)			2888	22
Final stroke reduced by	0	Priming Volume		8
Cylinder Mass (Kg)	105	Total Volume (Litres)		30
Maximum Pressure (Bar)	190	Max. first stage thrust		130 KN

***TIPPING CAPACITY AT WORKING PRESSURE



BODY LENGTH (BL)						OH
3750	3850	3950				
18	45°	18	44°	17	43°	150
24	50°	23	48°	22	47°	450
39	55°	34	53°	31	51°	750

$d = 178; r = 750; \text{Working Pressure } 110 \text{ bar}$

For guidance only;

Higher working pressures and tipping capacities may be possible.

To check your application email - applications@edbro.co.uk

NOTES

1. This cylinder is for lifting purposes only and side load conditions should be avoided
2. Cylinder is painted in primer paint to RAL5013
3. Refer to www.edbro.com for;-
 - Bracket details
 - Installation instructions that must be observed
 - Correct oil selection
 - An explanation of tipping capacity

*Includes 14mm Pull Out.

Edbro
SETTING THE INDUSTRY STANDARD

Edbro plc
Nelson Street, Bolton, England, BL3 2JJ
Tel +44 (0) 1204 528888 Fax +44 (0) 1204 531957
Email: postmaster@edbro.com Web: www.edbro.com

Technical Specifications are subject to change without notice
Date Created/Updated: 17 July 2012
Refer www.edbro.com to confirm latest specification
All dimensions are in 'mm', unless otherwise stated