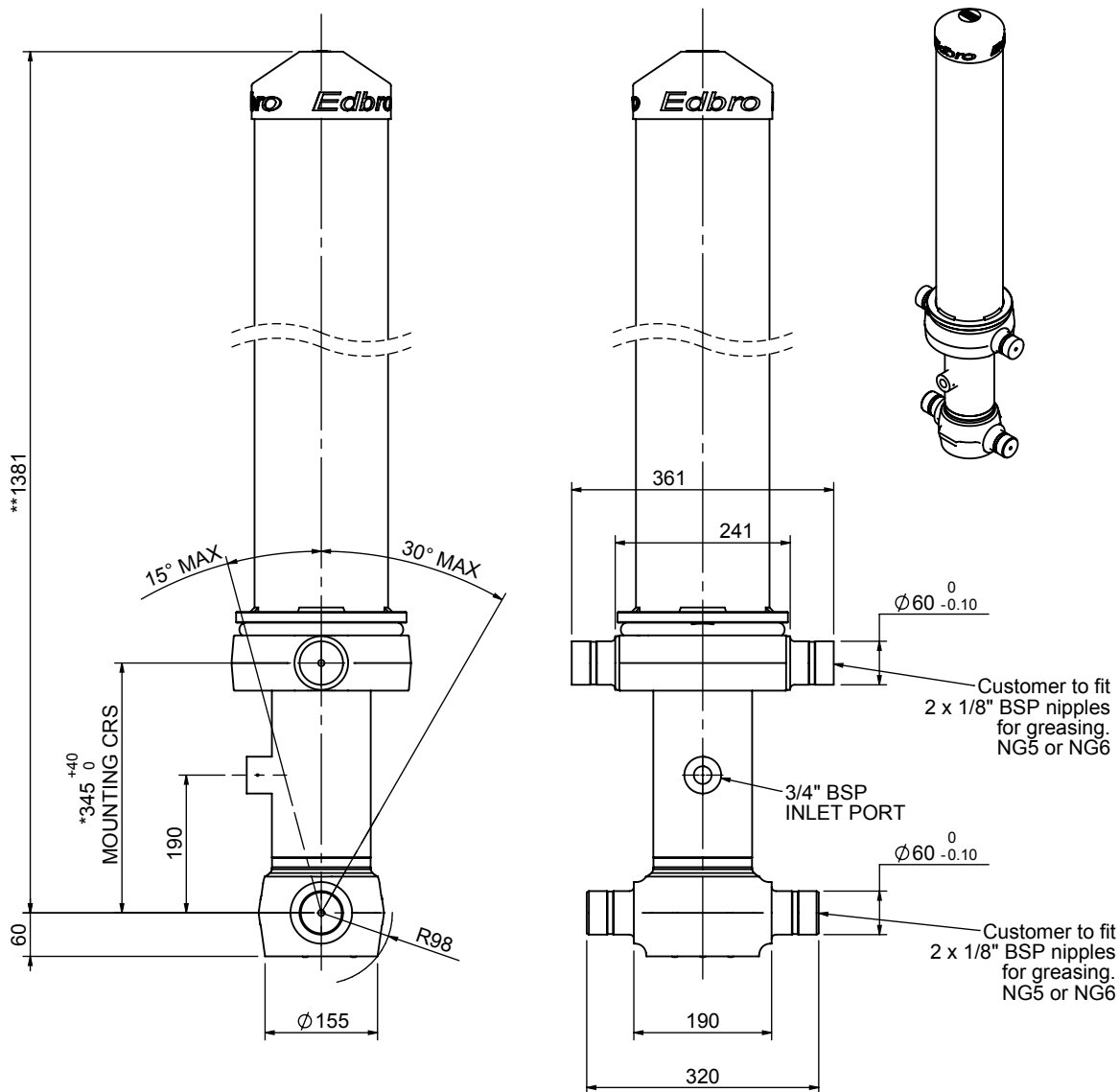


Cylinder 3 stage front end with outer cover

****ALLOW 50mm TO REMOVE CAP FOR SERVICING**

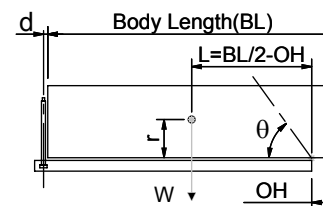


*Includes 14mm Pull Out.

CS110033344B19A11

SPECIFICATION		TIPPING CAPACITY : 21-34 TONNES***		
Stage	Diameter	Length	Stroke	Swept Volume
-	-	-	-	-
-	-	-	-	-
OUTER COVER	184	985	-	-
0	136	1325	-	-
1	117	1290	1099	12
2	98	1290	1117	8
3	79	1290	1122	6
Total (+5/-10)			3347	26
Final stroke reduced by	0	Priming Volume		9
Cylinder Mass (Kg)	115	Total Volume (Litres)		35
Maximum Pressure (Bar)	190	Max. first stage thrust		130 KN

***TIPPING CAPACITY AT WORKING PRESSURE



BODY LENGTH (BL)						OH
4550	4675	4800				
22	43°	22	42°	21	41°	150
27	46°	26	45°	25	44°	450
34	50°	32	49°	31	47°	750

$d = 178$; $r = 750$; Working Pressure 150 bar

Tipping angle (θ)

Body + payload mass, W (tonne)

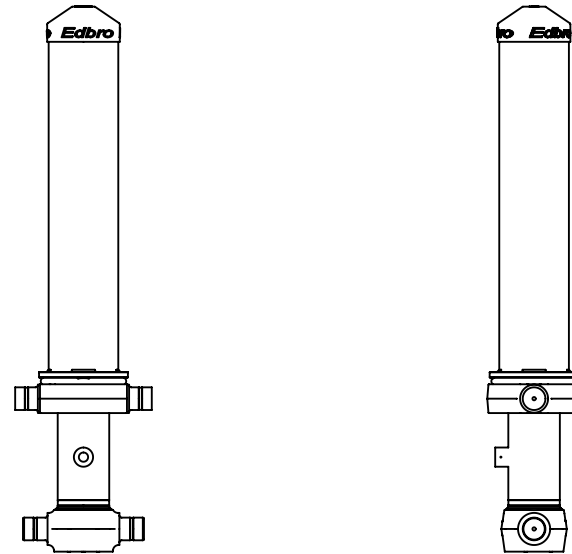
For guidance only;

Higher working pressures and tipping capacities may be possible.

To check your application email - applications@edbro.co.uk

NOTES

1. This cylinder is for lifting purposes only and side load conditions should be avoided
2. Cylinder is painted in primer paint to RAL5013
3. Refer to www.edbro.com for:-
 - Bracket details
 - Installation instructions that must be observed
 - Correct oil selection
 - An explanation of tipping capacity



CS110033344B19A11