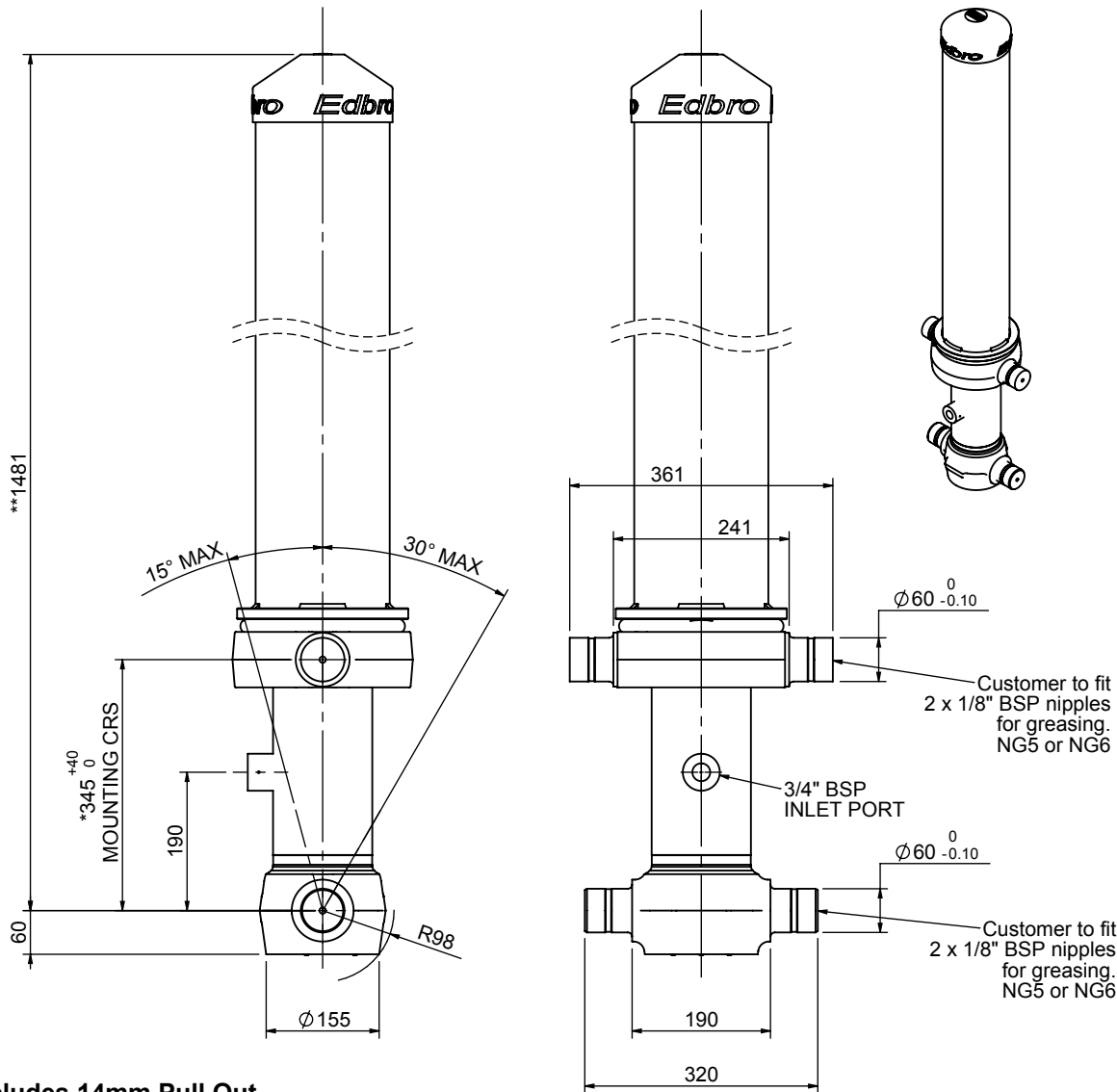


Cylinder 3 stage front end with outer cover

****ALLOW 50mm TO REMOVE CAP FOR SERVICING**

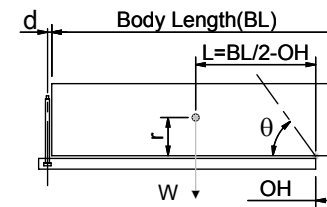


*Includes 14mm Pull Out.

CS110033644B19A11

SPECIFICATION		TIPPING CAPACITY : 21-32 TONNES***		
Stage	Diameter	Length	Stroke	Swept Volume
-	-	-	-	-
-	-	-	-	-
OUTER COVER	184	1085	-	-
0	136	1425	-	-
1	117	1390	1199	13
2	98	1390	1217	9
3	79	1390	1222	6
Total (+5/-10)			3638	28
Final stroke reduced by	0	Priming Volume		10
Cylinder Mass (Kg)	122	Total Volume (Litres)		38
Maximum Pressure (Bar)	190	Max. first stage thrust		130 KN

***TIPPING CAPACITY AT WORKING PRESSURE



BODY LENGTH (BL)						OH
4850		4975		5100		
22	44°	22	43°	21	42°	150
26	47°	25	46°	24	45°	450
32	51°	31	49°	29	48°	750

$d = 178$; $r = 750$; Working Pressure 150 bar

Tipping angle (θ)

Body + payload mass, W (tonne)

For guidance only;

Higher working pressures and tipping capacities may be possible.

To check your application email - applications@edbro.co.uk

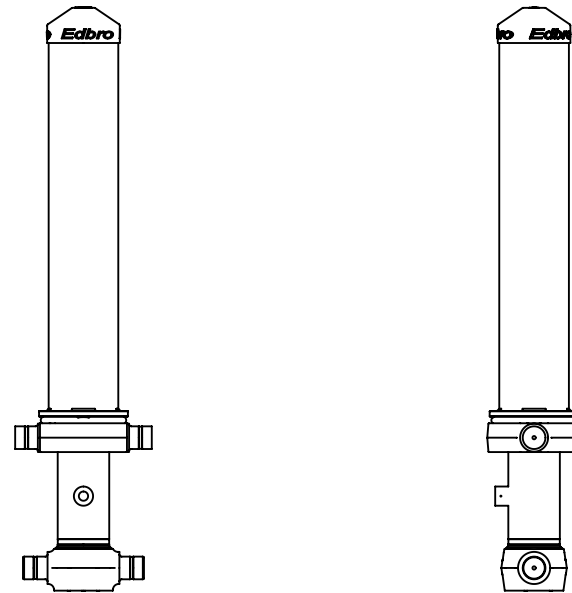
NOTES

1. This cylinder is for lifting purposes only and side load conditions should be avoided
2. Cylinder is painted in primer paint to RAL5013
3. Refer to www.edbro.com for:-
 - Bracket details
 - Installation instructions that must be observed
 - Correct oil selection
 - An explanation of tipping capacity

Edbro
SETTING THE INDUSTRY STANDARD

Edbro plc
Nelson Street, Bolton, England, BL3 2JJ
Tel +44 (0) 1204 528888 Fax +44 (0) 1204 531957
Email: postmaster@edbro.com Web: www.edbro.com

Technical Specifications are subject to change without notice
Date Created/Updated: 18 July 2012
Refer www.edbro.com to confirm latest specification
All dimensions are in 'mm', unless otherwise stated



CS110033644B19A11