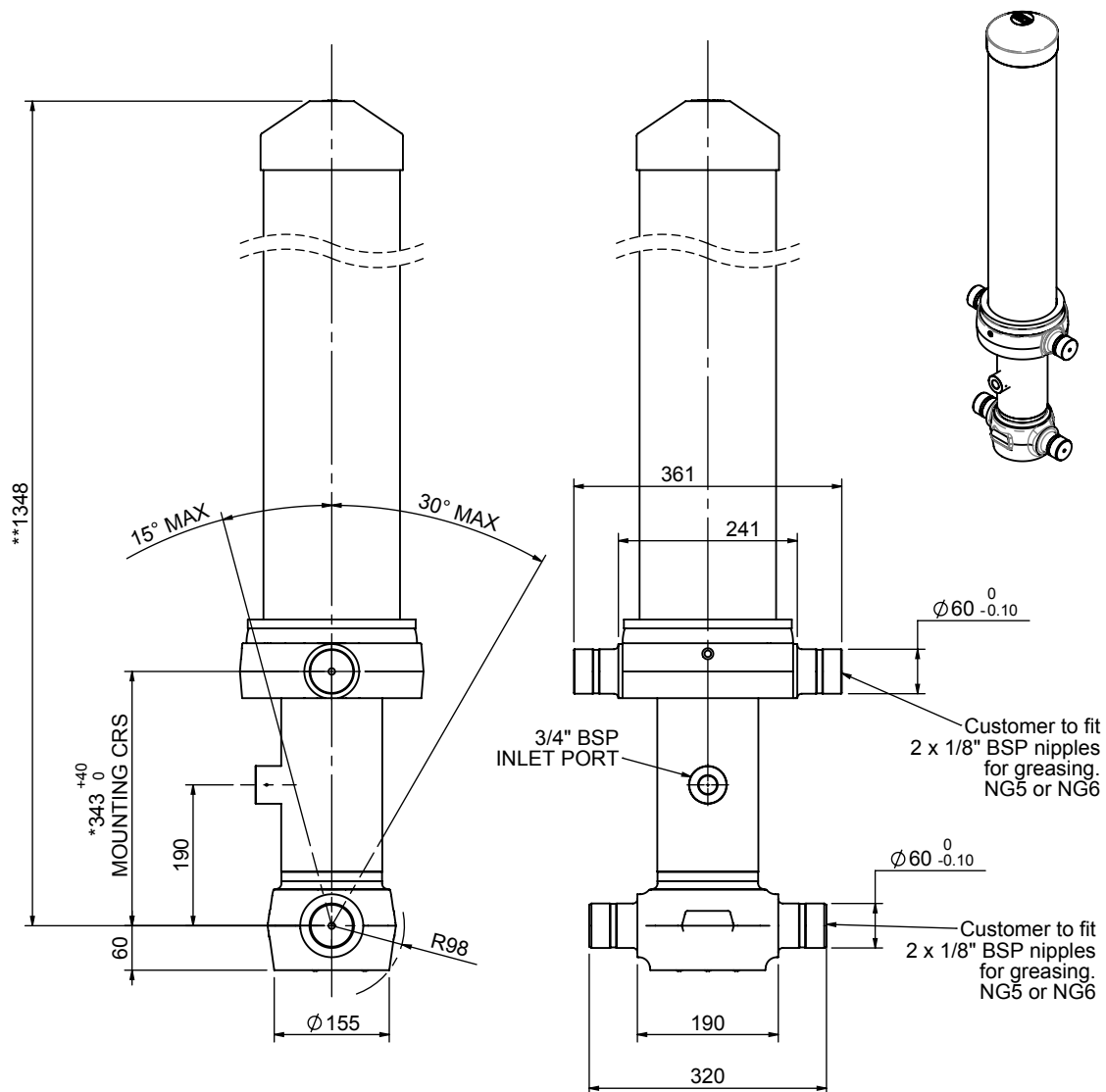


# Cylinder 4 stage front end with outer cover

**\*\*ALLOW 50mm TO REMOVE CAP FOR SERVICING**

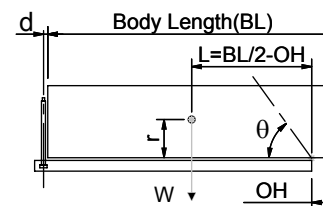


**\*Includes 14mm Pull Out.  
All Stages Chrome Plated**

# CS110044271B19A31C

SPECIFICATION		TIPPING CAPACITY : 17-27 TONNES***		
Stage	Diameter	Length	Stroke	Swept Volume
-	-	-	-	-
OUTER COVER	184	950	-	-
0	136	1275	-	-
1	117	1240	1048	11
2	98	1240	1067	8
3	79	1240	1072	5
4	63	1240	1077	3
Total (+5/-10)			4264	27
Final stroke reduced by	0	Priming Volume		8
Cylinder Mass (Kg)	126	Total Volume (Litres)		35
Maximum Pressure (Bar)	190	Max. first stage thrust		130 KN

## \*\*\*TIPPING CAPACITY AT WORKING PRESSURE



BODY LENGTH (BL)						OH
5250	5500	5750				
18	48°	17	46°	17	44°	150
22	51°	20	49°	19	46°	450
27	55°	24	52°	22	49°	750

$d = 178; r = 750; \text{Working Pressure } 175 \text{ bar}$   
 Tipping angle ( $\theta$ )  
 Body + payload mass, W (tonne)

**For guidance only;**  
 Higher working pressures and tipping capacities may be possible.  
 To check your application email - [applications@edbro.co.uk](mailto:applications@edbro.co.uk)

## NOTES

1. This cylinder is for lifting purposes only and side load conditions should be avoided
2. Cylinder is painted in primer paint to RAL5013
3. Refer to [www.edbro.com](http://www.edbro.com) for:-
  - Bracket details
  - Installation instructions that must be observed
  - Correct oil selection
  - An explanation of tipping capacity