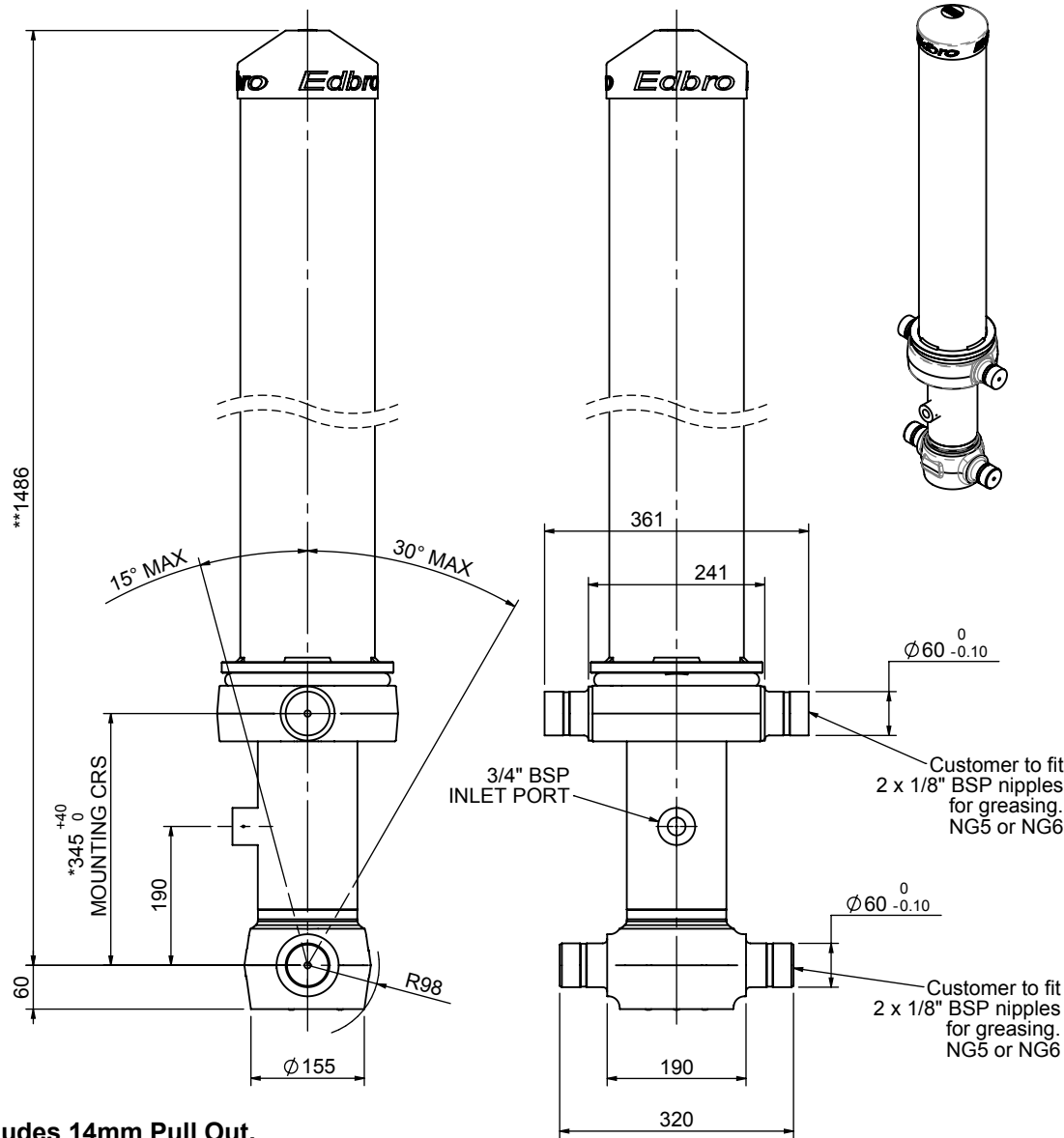


# Cylinder 4 stage front end with outer cover

**\*\*ALLOW 50mm TO REMOVE CAP FOR SERVICING**

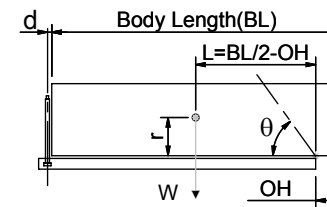


**\*Includes 14mm Pull Out.**

## CS110044871B19A11

SPECIFICATION		TIPPING CAPACITY : 16-23 TONNES***		
Stage	Diameter	Length	Stroke	Swept Volume
-	-	-	-	-
OUTER COVER	184	1090	-	-
0	136	1425	-	-
1	117	1390	1199	13
2	98	1390	1217	9
3	79	1390	1222	6
4	63	1390	1227	4
Total (+5/-10)			4865	32
Final stroke reduced by	0	Priming Volume		9
Cylinder Mass (Kg)	129	Total Volume (Litres)		41
Maximum Pressure (Bar)	190	Max. first stage thrust		130 KN

### \*\*\*TIPPING CAPACITY AT WORKING PRESSURE



BODY LENGTH (BL)						OH
6000	6250	6500	6750	7000	7250	
17	48°	17	46°	16	44°	150
20	51°	19	48°	18	46°	450
23	54°	22	51°	20	49°	750

$d = 178$ ;  $r = 750$ ; Working Pressure 175 bar

Tipping angle ( $\theta$ )

Body + payload mass, W (tonne)

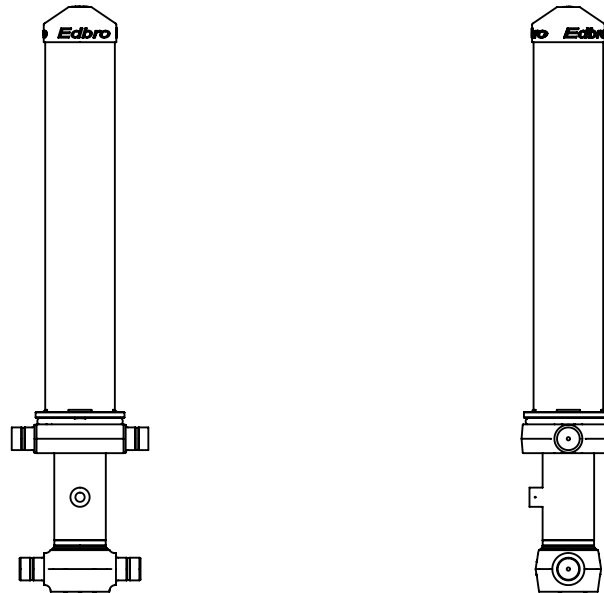
### For guidance only;

Higher working pressures and tipping capacities may be possible.

To check your application email - [applications@edbro.co.uk](mailto:applications@edbro.co.uk)

### NOTES

1. This cylinder is for lifting purposes only and side load conditions should be avoided
2. Cylinder is painted in primer paint to RAL5013
3. Refer to [www.edbro.com](http://www.edbro.com) for:-
  - Bracket details
  - Installation instructions that must be observed
  - Correct oil selection
  - An explanation of tipping capacity



CS110044871B19A11