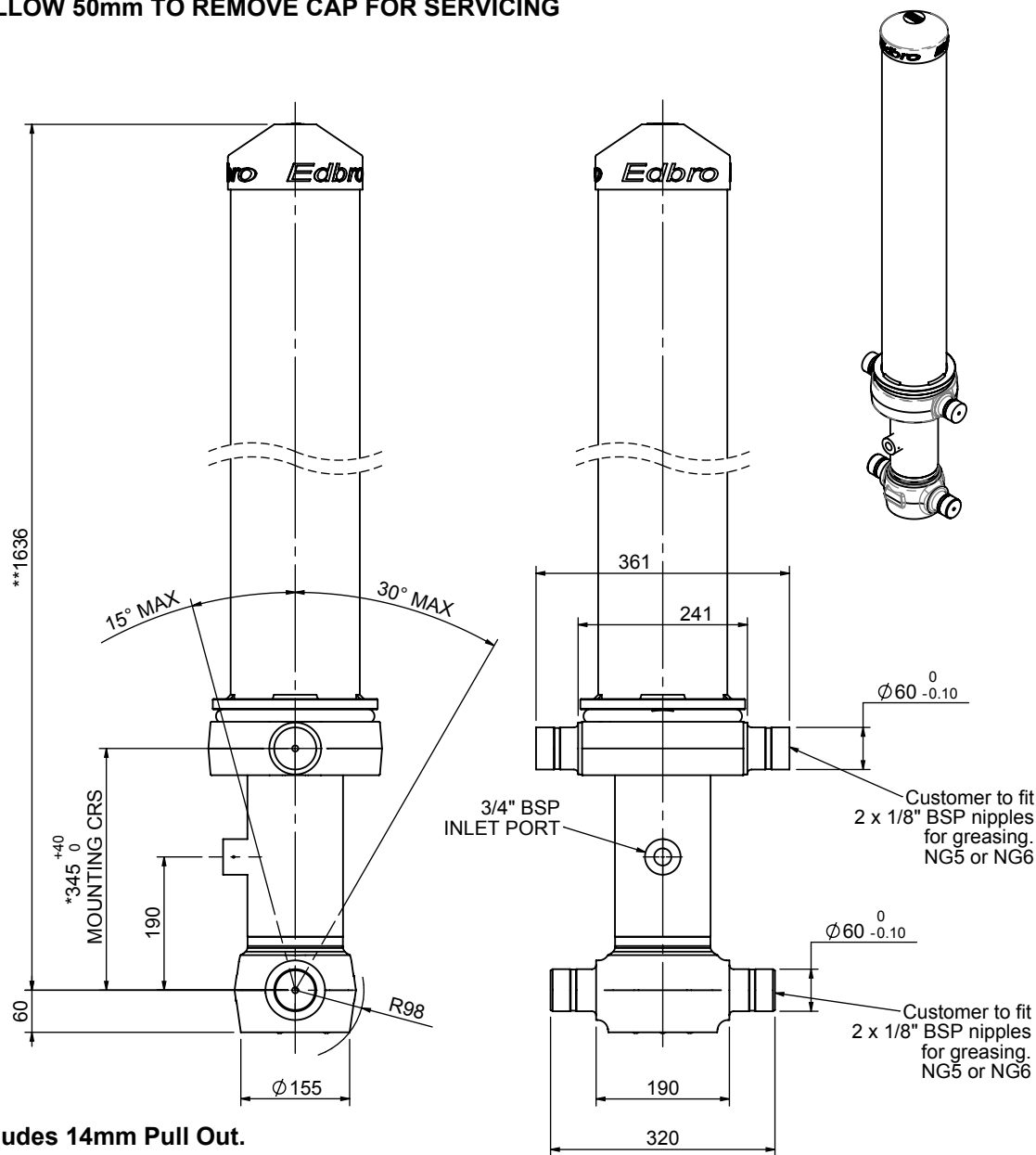


CS110045471B19A11

Cylinder 4 stage front end with outer cover

****ALLOW 50mm TO REMOVE CAP FOR SERVICING**

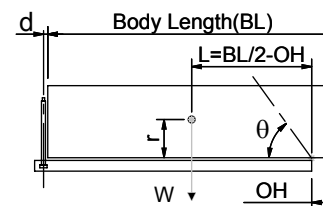


*Includes 14mm Pull Out.

CS110045471B19A11

SPECIFICATION		TIPPING CAPACITY : 16-21 TONNES***		
Stage	Diameter	Length	Stroke	Swept Volume
-	-	-	-	-
OUTER COVER	184	1240	-	-
0	136	1575	-	-
1	117	1540	1349	15
2	98	1540	1367	10
3	79	1540	1372	7
4	63	1540	1377	4
Total (+5/-10)			5465	36
Final stroke reduced by	0	Priming Volume		10
Cylinder Mass (Kg)	140	Total Volume (Litres)		46
Maximum Pressure (Bar)	190	Max. first stage thrust		130 KN

***TIPPING CAPACITY AT WORKING PRESSURE



BODY LENGTH (BL)					OH	
6750	7000	7250				
17	48°	16	46°	16	44°	150
19	50°	18	48°	17	46°	450
21	53°	20	51°	19	49°	750

d = 178; r = 750; Working Pressure 175 bar

Tipping angle (θ)

Body + payload mass, W (tonne)

For guidance only;

Higher working pressures and tipping capacities may be possible.

To check your application email - applications@edbro.co.uk

NOTES

1. This cylinder is for lifting purposes only and side load conditions should be avoided
2. Cylinder is painted in primer paint to RAL5013
3. Refer to www.edbro.com for:-
 - Bracket details
 - Installation instructions that must be observed
 - Correct oil selection
 - An explanation of tipping capacity