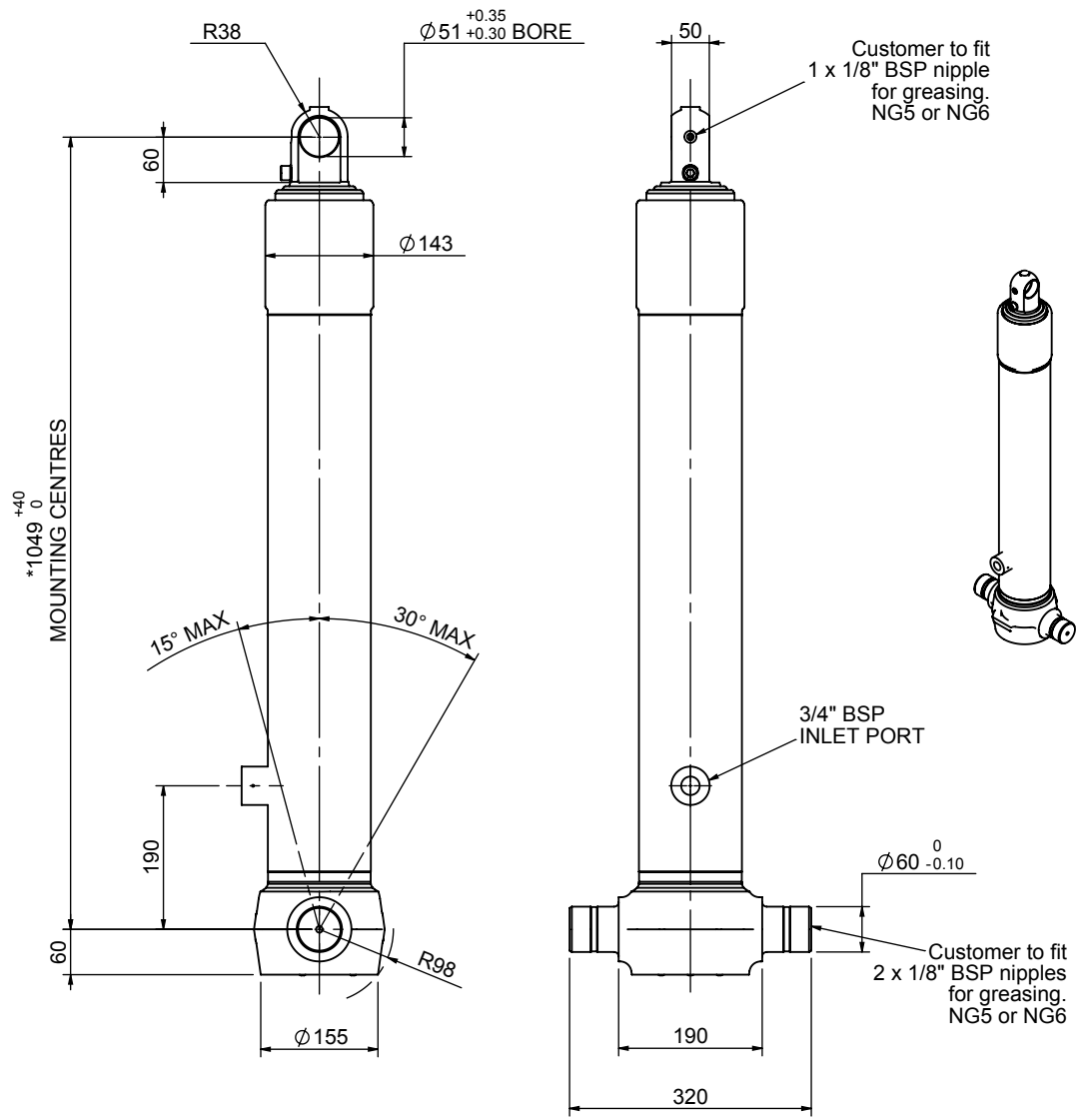


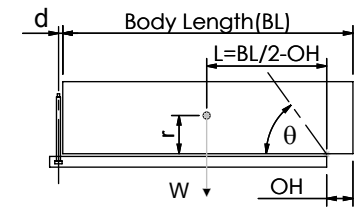
# Cylinder 3 stage front end with plain eye

CS110E32444B19A01



SPECIFICATION		TIPPING CAPACITY : 23-33 TONNES***		
Stage	Diameter	Length	Stroke	Swept Volume
-	-	-	-	-
-	-	-	-	-
-	-	-	-	-
0	136	1025	-	-
1	117	990	804	9
2	98	990	817	6
3	79	990	822	4
Total (+5/-10)			2443	19
Final stroke reduced by	0	Priming Volume		7
Cylinder Mass (Kg)	63	Total Volume (Litres)		26
Maximum Pressure (Bar)	190	Max. first stage thrust		130 KN

\*\*\*TIPPING CAPACITY AT WORKING PRESSURE



BODY LENGTH (BL)				OH
3900	4000	4100		
				150
23	42°	23	41°	450
33	47°	30	45° 29	44° 750

$d = 0$ ;  $r = 750$ ; Working Pressure 135 bar  
**For guidance only;**  
 Higher working pressures and tipping capacities may be possible.  
 To check your application email - [applications@edbro.co.uk](mailto:applications@edbro.co.uk)

NOTES

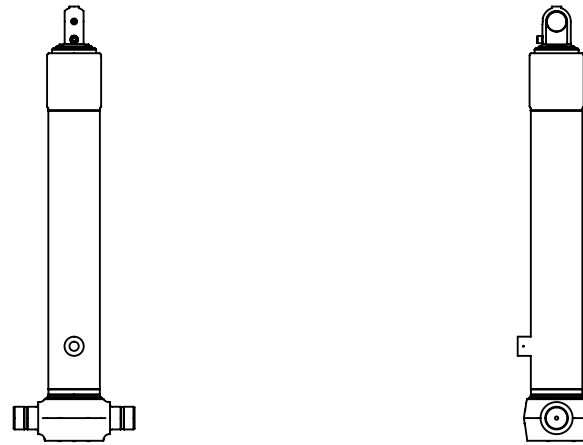
- This cylinder is for lifting purposes only and side load conditions should be avoided
- Cylinder is painted in primer paint to RAL5013
- Refer to [www.edbro.com](http://www.edbro.com) for:-
  - Bracket details
  - Installation instructions that must be observed
  - Correct oil selection
  - An explanation of tipping capacity

\*Includes 9mm Pull Out.  
Last Stage Chrome Plated



**Edbro plc**  
 Nelson Street, Bolton, England, BL3 2JJ  
 Tel +44 (0) 1204 528888 Fax +44 (0) 1204 531957  
 Email: [postmaster@edbro.com](mailto:postmaster@edbro.com) Web: [www.edbro.com](http://www.edbro.com)

Technical Specifications are subject to change without notice  
 Date Created/Updated: 18 July 2012  
 Refer [www.edbro.com](http://www.edbro.com) to confirm latest specification  
 All dimensions are in 'mm', unless otherwise stated



CS110E32444B19A01