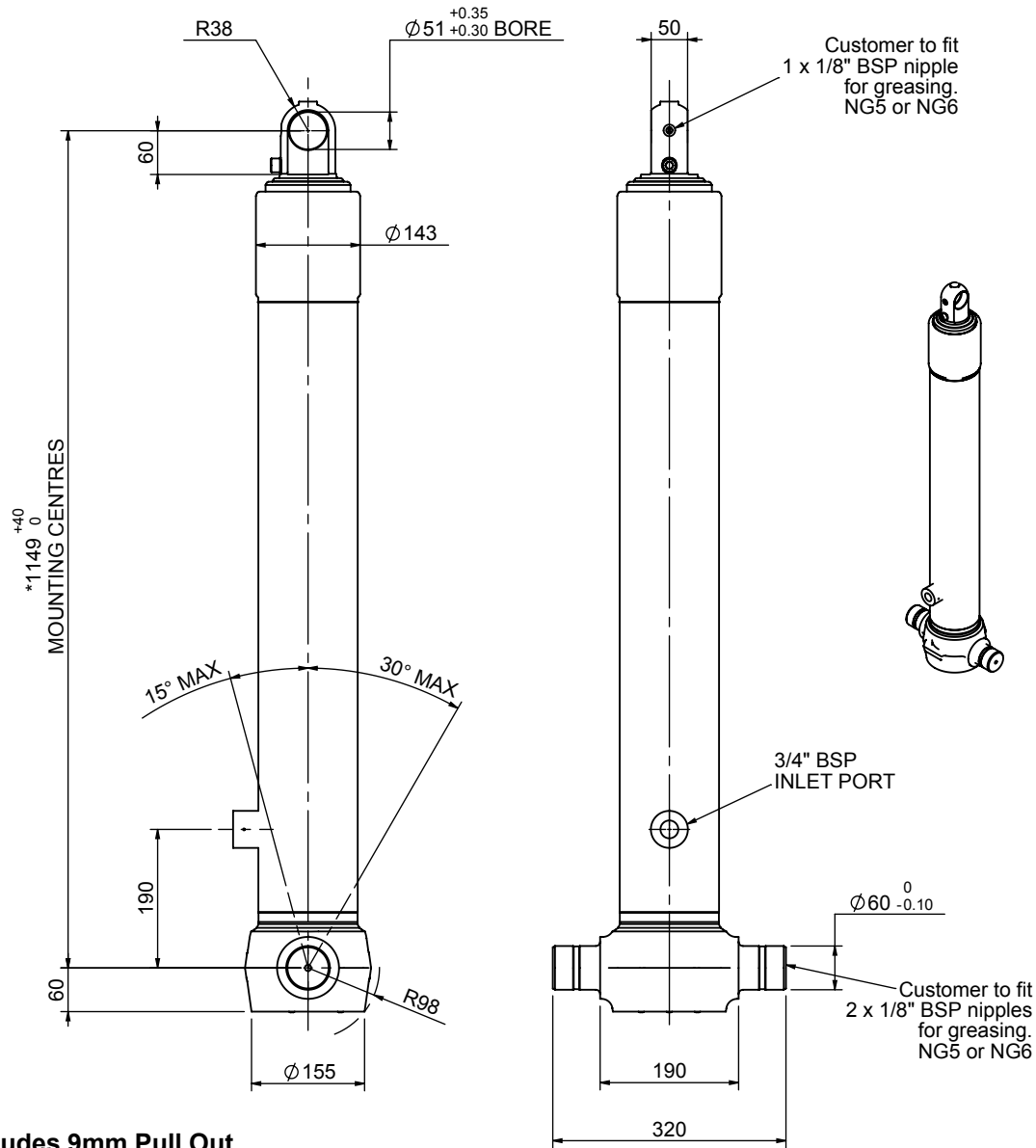


Cylinder 3 stage front end with plain eye

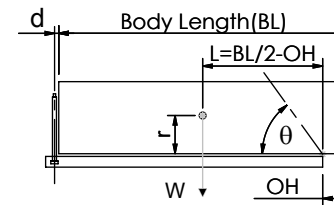


*Includes 9mm Pull Out.
Last Stage Chrome Plated

CS110E32744B19A01

SPECIFICATION		TIPPING CAPACITY : 19-32 TONNES***		
Stage	Diameter	Length	Stroke	Swept Volume
-	-	-	-	-
-	-	-	-	-
-	-	-	-	-
0	136	1125	-	-
1	117	1090	904	10
2	98	1090	917	7
3	79	1090	922	5
Total (+5/-10)			2743	22
Final stroke reduced by	0	Priming Volume		8
Cylinder Mass (Kg)	68	Total Volume (Litres)		30
Maximum Pressure (Bar)	190	Max. first stage thrust		130 KN

***TIPPING CAPACITY AT WORKING PRESSURE



		BODY LENGTH (BL)			OH	
		4100	4200	4300		
19	41°				150	
24	45°	23	44°	22	43°	450
32	50°	30	47°	29	47°	750

d = 0; r = 750; Working Pressure 135 bar

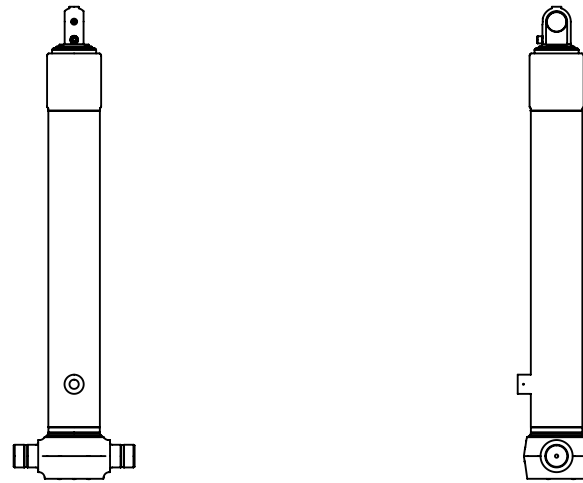
For guidance only;

Higher working pressures and tipping capacities may be possible.

To check your application email - applications@edbro.co.uk

NOTES

1. This cylinder is for lifting purposes only and side load conditions should be avoided
2. Cylinder is painted in primer paint to RAL5013
3. Refer to www.edbro.com for:-
 - Bracket details
 - Installation instructions that must be observed
 - Correct oil selection
 - An explanation of tipping capacity



CS110E32744B19A01