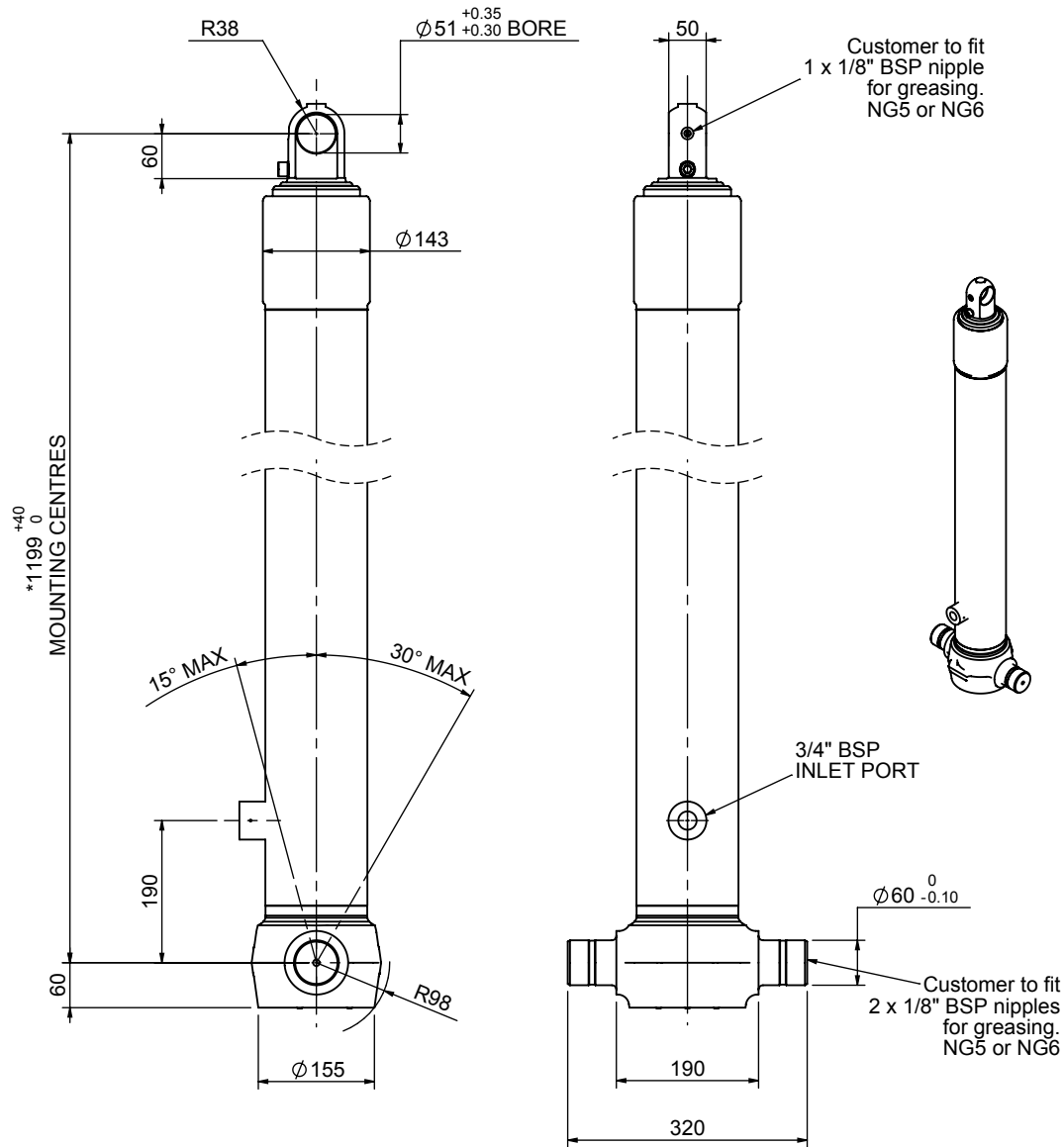


Cylinder 3 stage front end with plain eye

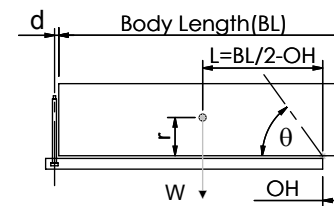


*Includes 9mm Pull Out.
Last Stage Chrome Plated

CS110E32894B19A01

SPECIFICATION		TIPPING CAPACITY : 19-32 TONNES***		
Stage	Diameter	Length	Stroke	Swept Volume
-	-	-	-	-
-	-	-	-	-
-	-	-	-	-
0	136	1175	-	-
1	117	1140	954	10
2	98	1140	967	7
3	79	1140	972	5
Total (+5/-10)			2893	22
Final stroke reduced by	0	Priming Volume		8
Cylinder Mass (Kg)	71	Total Volume (Litres)		30
Maximum Pressure (Bar)	190	Max. first stage thrust		130 KN

***TIPPING CAPACITY AT WORKING PRESSURE



BODY LENGTH (BL)					OH	
4200	4300	4400				
19	43°	19	42°	19	41°	150
24	47°	23	45°	22	44°	450
32	51°	30	50°	28	48°	750

d = 0; r = 750; Working Pressure 135 bar

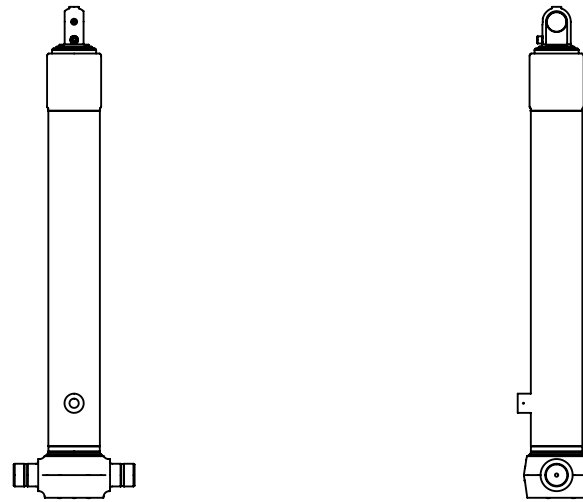
For guidance only;

Higher working pressures and tipping capacities may be possible.

To check your application email - applications@edbro.co.uk

NOTES

1. This cylinder is for lifting purposes only and side load conditions should be avoided
2. Cylinder is painted in primer paint to RAL5013
3. Refer to www.edbro.com for:-
 - Bracket details
 - Installation instructions that must be observed
 - Correct oil selection
 - An explanation of tipping capacity



CS110E32894B19A01