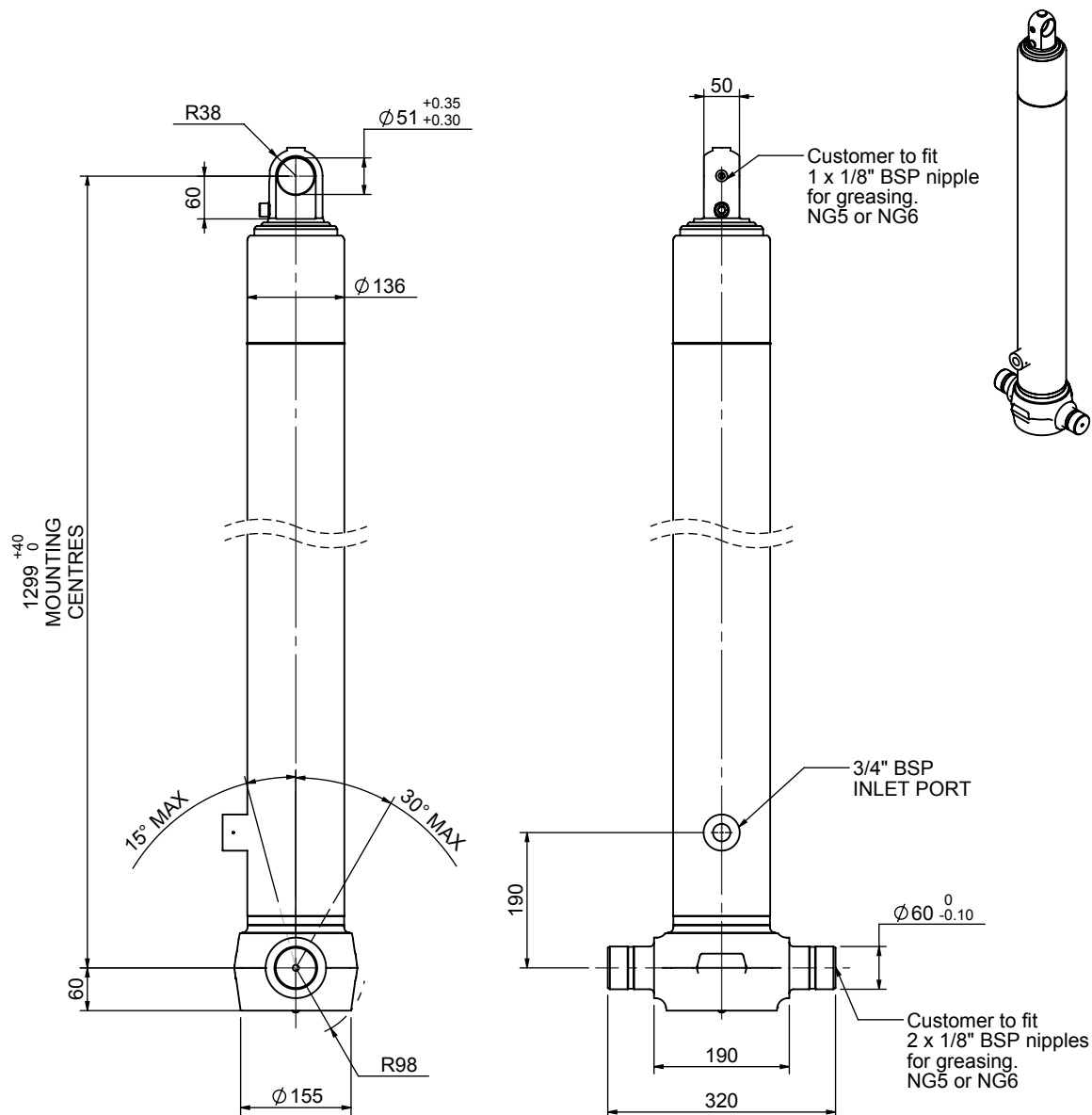


# Cylinder 3 stage front end with plain eye

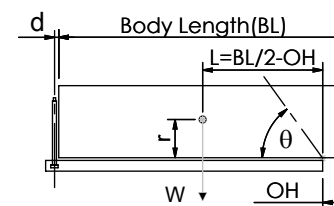


\*Includes 9mm Pull Out. Last Stage Chrome Plated

## CS110E33194B19A01

SPECIFICATION		TIPPING CAPACITY : 19-31 TONNES***		
Stage	Diameter	Length	Stroke	Swept Volume
-	-	-	-	-
-	-	-	-	-
-	-	-	-	-
0	136	1275	-	-
1	117	1240	1054	11
2	98	1240	1067	8
3	79	1240	1072	5
Total (+5/-10)			3193	24
Final stroke reduced by	0	Priming Volume		9
Cylinder Mass (Kg)	85	Total Volume (Litres)		33
Maximum Pressure (Bar)	190	Max. first stage thrust		130 KN

### \*\*\*TIPPING CAPACITY AT WORKING PRESSURE



BODY LENGTH (BL)						OH
4400		4525		4650		
20	55°	19	44°	19	42°	150
24	49°	23	47°	22	46°	450
31	54°	29	52°	28	50°	750

d = 0; r = 750; Working Pressure 135 bar

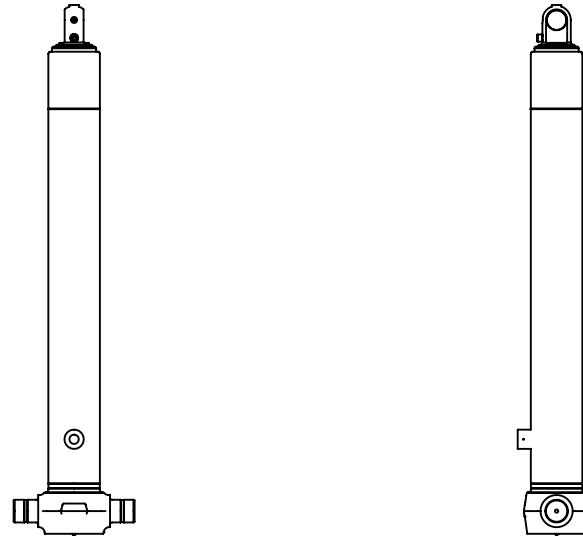
### For guidance only;

Higher working pressures and tipping capacities may be possible.

To check your application email - [applications@edbro.co.uk](mailto:applications@edbro.co.uk)

### NOTES

1. This cylinder is for lifting purposes only and side load conditions should be avoided
2. Cylinder is painted in primer paint to RAL5013
3. Refer to [www.edbro.com](http://www.edbro.com) for:-
  - Bracket details
  - Installation instructions that must be observed
  - Correct oil selection
  - An explanation of tipping capacity



CS110E33194B19A01