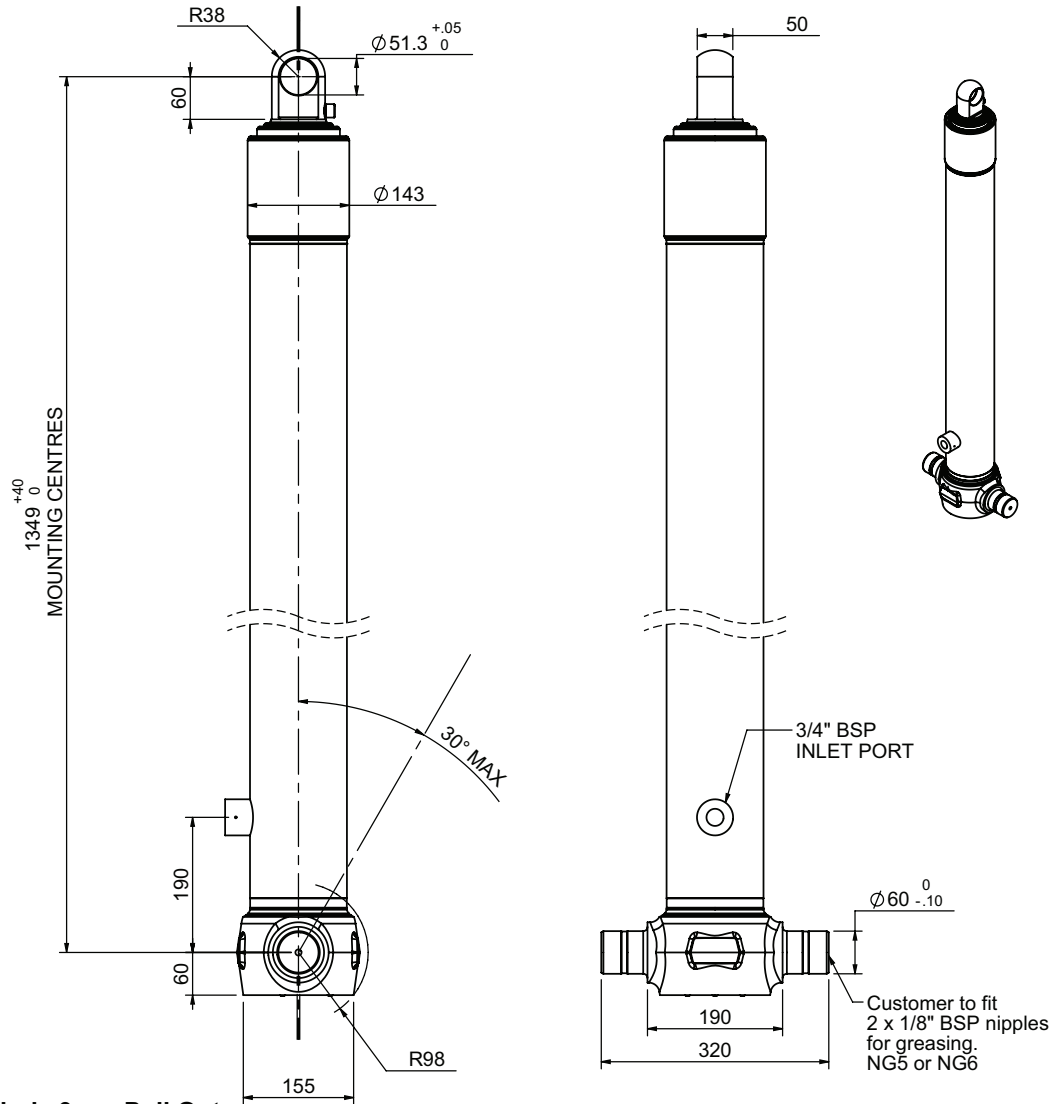


Cylinder 3 stage front end with plain eye

CS110E33344B19A01

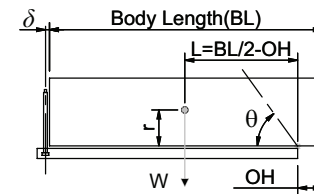


*Include 9mm Pull Out

SPECIFICATION		RATED CAPACITY : 19-31 TONNES ***		
Stage	Diameter	Length	Stroke	Swept Volume
-	-	-	-	-
-	-	-	-	-
-	-	-	-	-
0	136	1325	-	-
1	117	1290	1104	12
2	98	1290	1117	8
3	79	1290	1122	6
Final stroke reduced by	0	Total (+5/-10)	3343	26
Cylinder Mass (Kg)	75.5	Priming Volume	8.9	
Rated Pressure (Bar)	135	Total Volume (Litres)	34.9	
Maximum Pressure (Bar)	175	Max. first stage thrust	130 KN	

***TIPPING CAPACITY AT RATED PRESSURE

$d = 178 ; r = 750$



		BODY LENGTH (BL)			OH	
		4500	4625	4750		
20	46°	19	45°	19	44°	150
24	50°	23	48°	22	47°	450
31	55°	29	53°	27	51°	750

Tipping angle (θ)
Body + payload mass, W (tonne)

For guidance only;

Higher Rated Pressures may be possible. To check your application, email Edbro plc at <applications@edbro.co.uk>

NOTES

- If hydraulic pressure is used to limit overloading, the system relief valve must be set to the Rated Pressure unless agreed otherwise by Edbro
- The system relief valve can be set to Maximum Pressure if the load is limited by other means. See RATINGS page for advice
- This cylinder is for lifting purposes only and sideload conditions must be avoided
- Cylinder is painted in primer paint to RAL5013
- See bracket options page BRKT01, BRKT02
- See installation instructions INSTALL01
- Use oil according to specification OIL01