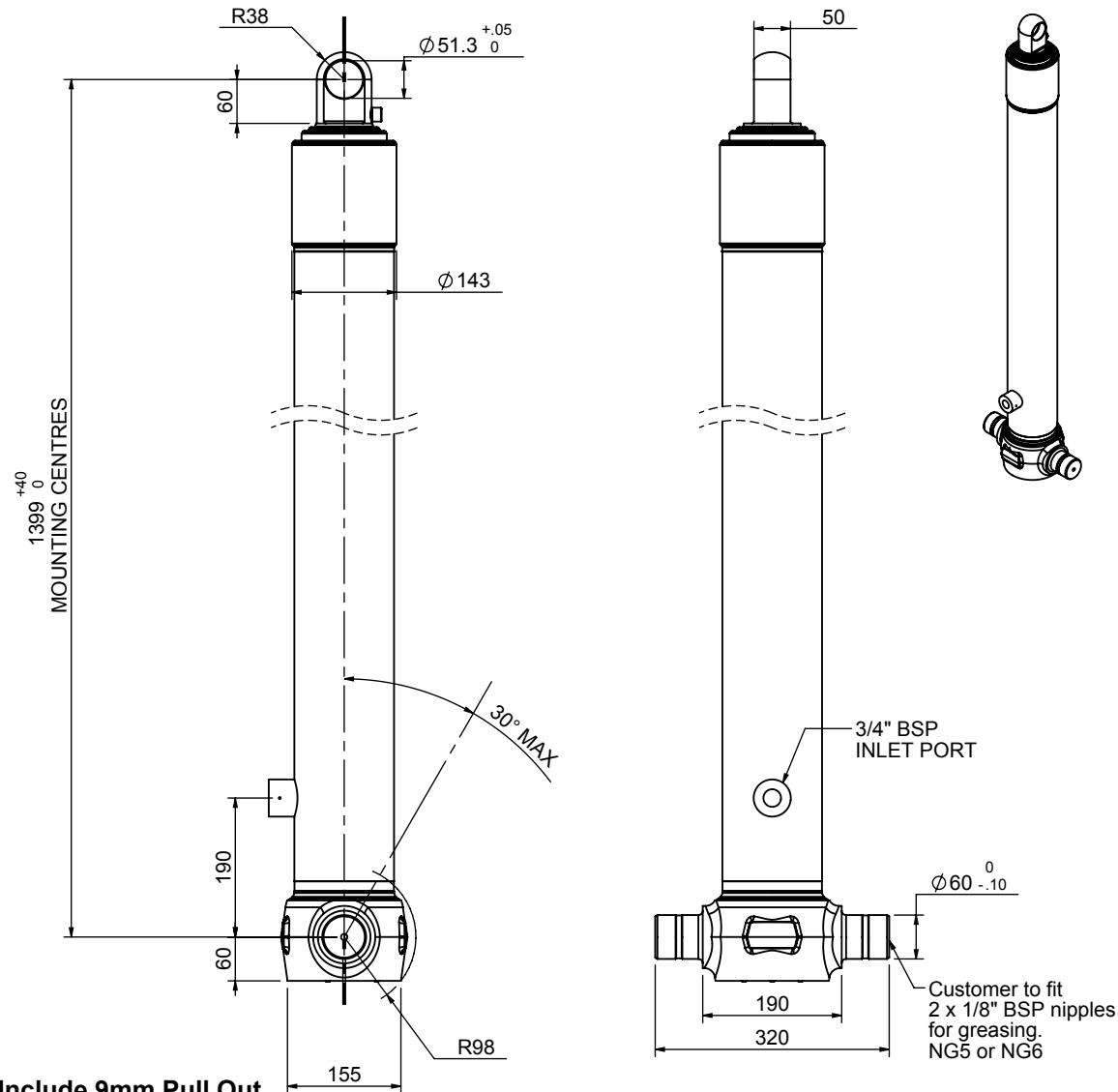


Cylinder 3 stage front end with plain eye

CS110E33494B19A01C

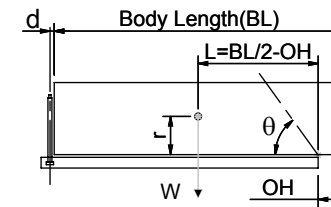


*Include 9mm Pull Out
All Stages Fully Chromed

SPECIFICATION		RATED CAPACITY : 23-35 TONNES***		
Stage	Diameter	Length	Stroke	Swept Volume
-	-	-	-	-
-	-	-	-	-
-	-	-	-	-
0	136	1375	-	-
1	117	1340	1154	12
2	98	1340	1167	9
3	79	1340	1172	6
Final stroke reduced by	0	Total (+5/-10)	3493	27
Cylinder Mass (Kg)	78.11	Priming Volume	9.6	
Rated Pressure (Bar)	165	Total Volume (Litres)	36.6	
Maximum Pressure (Bar)	175	Max. first stage thrust	130 KN	

***TIPPING CAPACITY AT RATED PRESSURE

d = 178 ; r = 750



BODY LENGTH (BL)						OH
4500		4625		4750		
24	46°	23	44°	23	43°	150
28	49°	27	48°	26	46°	450
35	54°	33	52°	32	50°	750

Tipping angle (θ)
 Body + payload mass, W (tonne)

For guidance only;

Higher Rated Pressures may be possible. To check your application, email Edbro plc at <applications@edbro.co.uk>

NOTES

- If hydraulic pressure is used to limit overloading, the system relief valve must be set to the Rated Pressure unless agreed otherwise by Edbro
- The system relief valve can be set to Maximum Pressure if the load is limited by other means. See RATINGS page for advice
- This cylinder is for lifting purposes only and sload conditions must be avoided
- Cylinder is painted in primer paint to RAL5013
- See bracket options page BRKT01, BRKT02
- See installation instructions INSTALL01
- Use oil according to specification OIL01