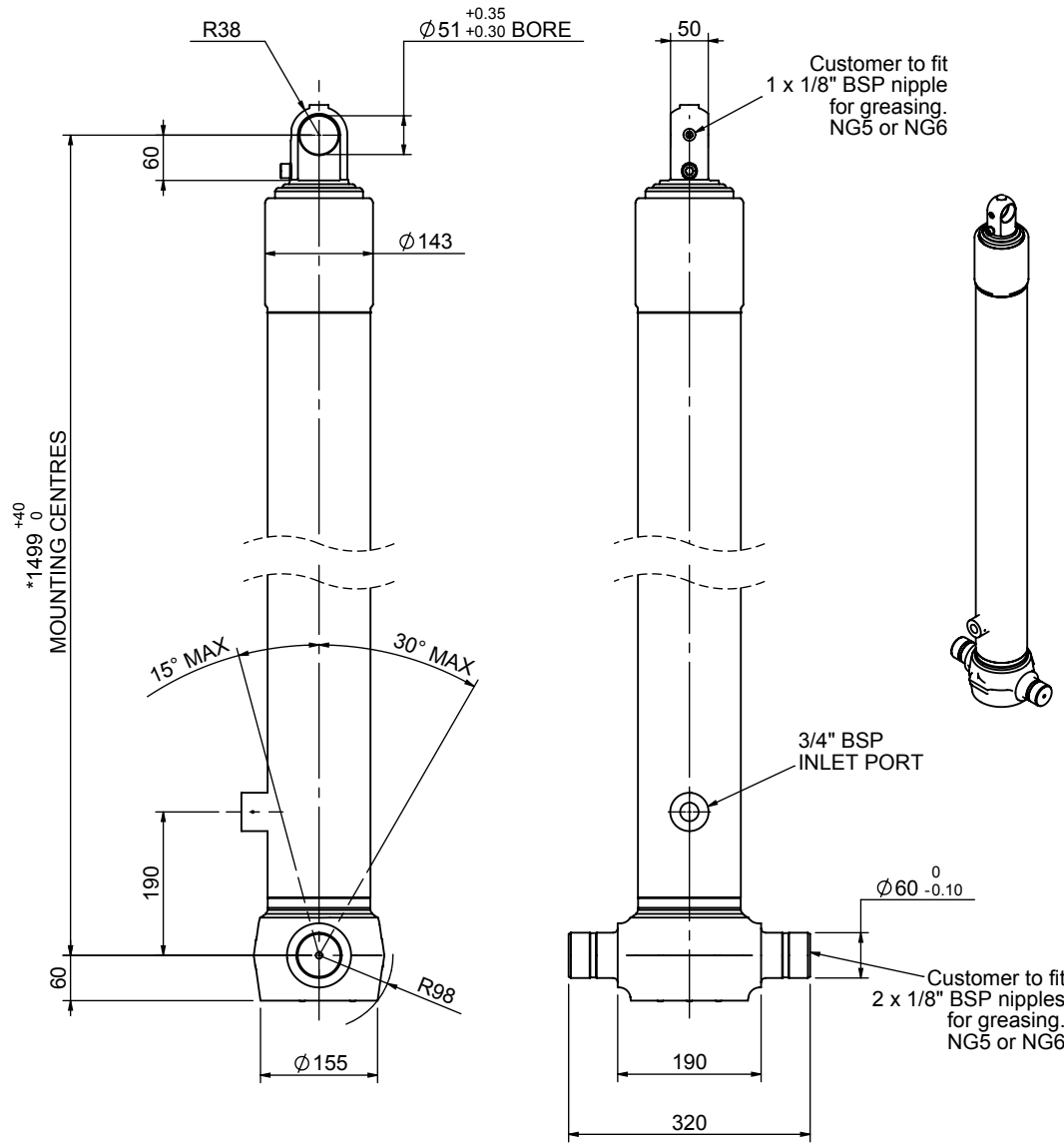


Cylinder 3 stage front end with plain eye

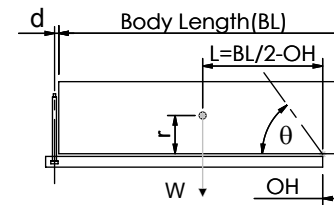
CS110E33794B19A01



*Includes 9mm Pull Out.
Last Stage Chrome Plated

SPECIFICATION		TIPPING CAPACITY : 18-28 TONNES***		
Stage	Diameter	Length	Stroke	Swept Volume
-	-	-	-	-
-	-	-	-	-
-	-	-	-	-
0	136	1475	-	-
1	117	1440	1254	13
2	98	1440	1267	10
3	79	1440	1272	6
Total (+5/-10)			3793	29
Final stroke reduced by	0	Priming Volume		11
Cylinder Mass (Kg)	86	Total Volume (Litres)		29
Maximum Pressure (Bar)	190	Max. first stage thrust		130 KN

***TIPPING CAPACITY AT WORKING PRESSURE



BODY LENGTH (BL)						OH
5000		5125		5250		
19	47°	19	46°	18	45°	150
22	51°	22	49°	21	48°	450
28	55°	26	53°	25	51°	750

d = 0; r = 750; Working Pressure 135 bar

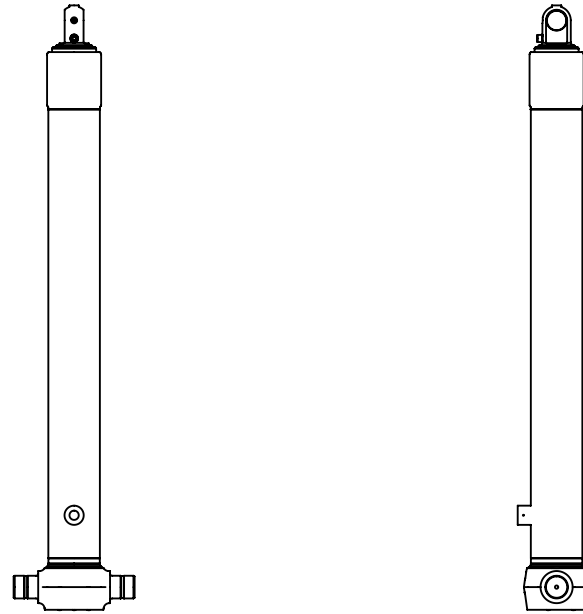
For guidance only;

Higher working pressures and tipping capacities may be possible.

To check your application email - applications@edbro.co.uk

NOTES

1. This cylinder is for lifting purposes only and side load conditions should be avoided
2. Cylinder is painted in primer paint to RAL5013
3. Refer to www.edbro.com for:-
 - Bracket details
 - Installation instructions that must be observed
 - Correct oil selection
 - An explanation of tipping capacity



CS110E33794B19A01