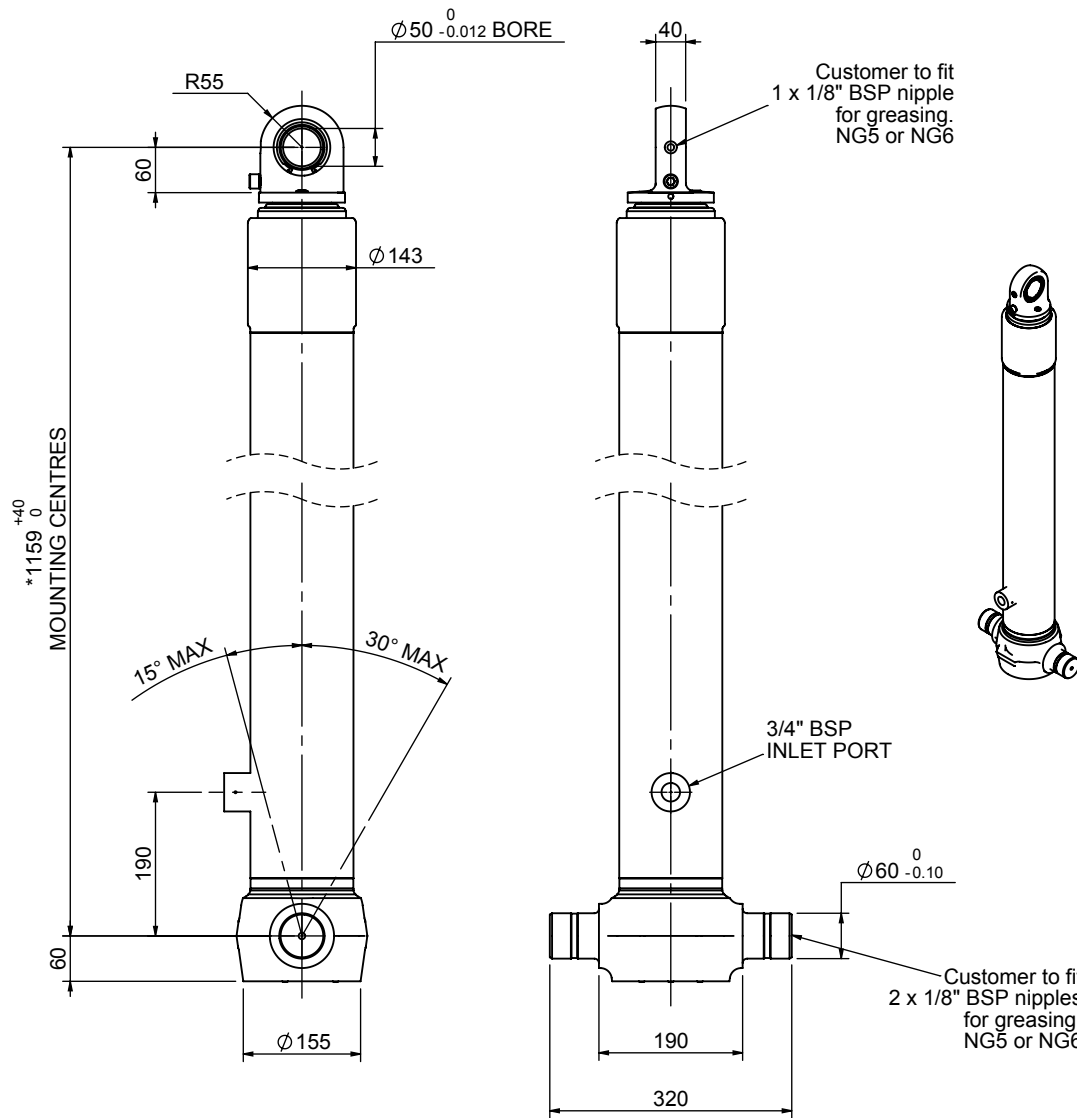


Cylinder 3 stage front end with spherical eye

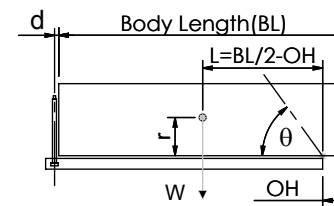
CS110S32744B19A01



SPECIFICATION

SPECIFICATION		TIPPING CAPACITY : 19-32 TONNES***		
Stage	Diameter	Length	Stroke	Swept Volume
-	-	-	-	-
-	-	-	-	-
-	-	-	-	-
0	136	1125	-	-
1	117	1090	904	10
2	98	1090	917	7
3	79	1090	922	5
Total (+5/-10)			2743	22
Final stroke reduced by	0	Priming Volume		8
Cylinder Mass (Kg)	71	Total Volume (Litres)		30
Maximum Pressure (Bar)	190	Max. first stage thrust		130 KN

***TIPPING CAPACITY AT WORKING PRESSURE



BODY LENGTH (BL)					OH	
4100	4200	4300				
19	41°				150	
24	45°	23	44°	22	43°	450
32	50°	30	48°	29	47°	750

$d = 0$; $r = 750$; Working Pressure 135 bar

For guidance only;

Higher working pressures and tipping capacities may be possible.

To check your application email - applications@edbro.co.uk

NOTES

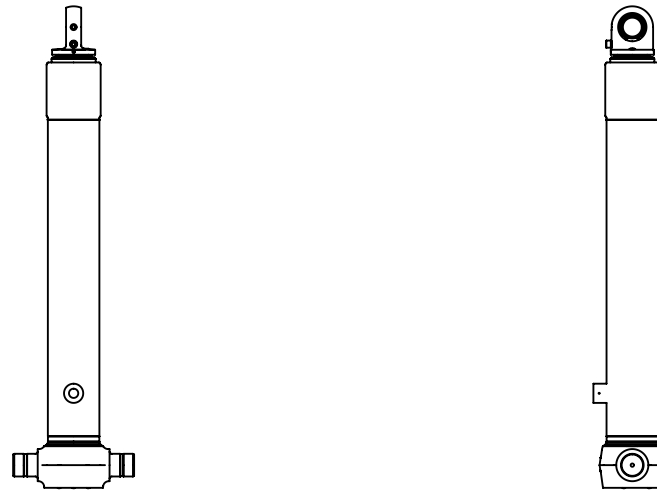
- This cylinder is for lifting purposes only and side load conditions should be avoided
- Cylinder is painted in primer paint to RAL5013
- Refer to www.edbro.com for:-
 - Bracket details
 - Installation instructions that must be observed
 - Correct oil selection
 - An explanation of tipping capacity

*Includes 9mm Pull Out.
Last Stage Chrome Plated

Edbro
SETTING THE INDUSTRY STANDARD

Edbro plc
Nelson Street, Bolton, England, BL3 2JJ
Tel +44 (0) 1204 528888 Fax +44 (0) 1204 531957
Email: postmaster@edbro.com Web: www.edbro.com

Technical Specifications are subject to change without notice
Date Created/Updated: 17 September 2012
Refer www.edbro.com to confirm latest specification
All dimensions are in 'mm', unless otherwise stated



CS110S32744B19A01