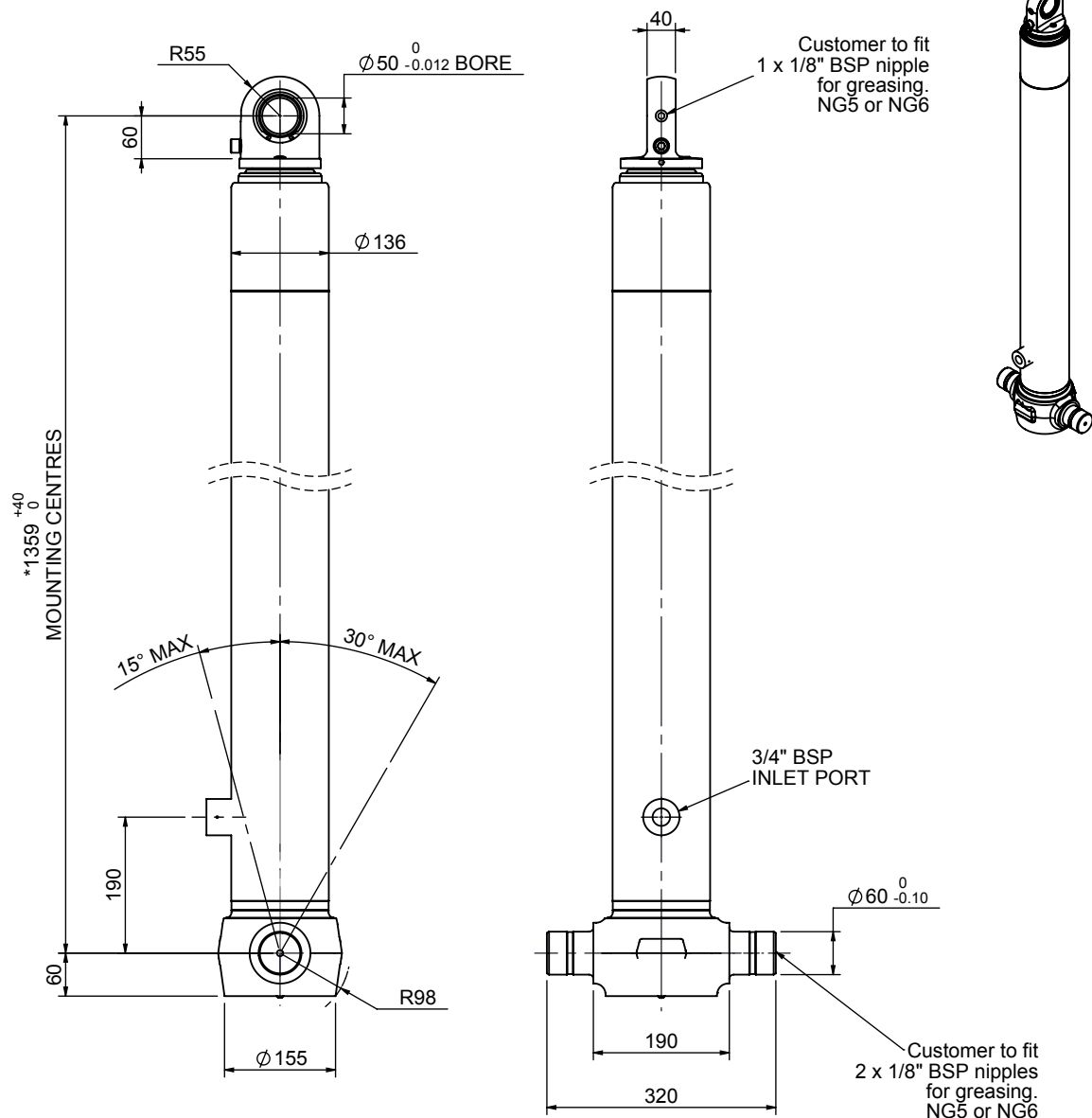


Cylinder 3 stage front end with spherical eye

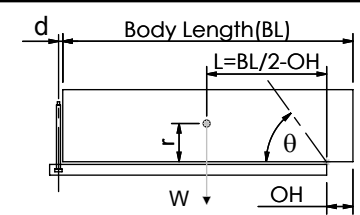
CS110S33344B19A01



SPECIFICATION TIPPING CAPACITY : 19-31 TONNES***

Stage	Diameter	Length	Stroke	Swept Volume
-	-	-	-	-
-	-	-	-	-
-	-	-	-	-
0	136	1325	-	-
1	117	1290	1104	12
2	98	1290	1117	8
3	79	1290	1122	6
Total (+5/-10)			3343	26
Final stroke reduced by	0	Priming Volume		9
Cylinder Mass (Kg)	90	Total Volume (Litres)		35
Maximum Pressure (Bar)	190	Max. first stage thrust		130 KN

***TIPPING CAPACITY AT WORKING PRESSURE



	BODY LENGTH (BL)				OH	
	4550	4675	4800			
20	46°	19	44°	19	41°	150
24	50°	23	48°	22	41°	450
31	54°	29	52°	27	45°	750

$d = 0$; $r = 750$; Working Pressure 135 bar
 For guidance only;
 Higher working pressures and tipping capacities may be possible.
 To check your application email - applications@edbro.co.uk

NOTES

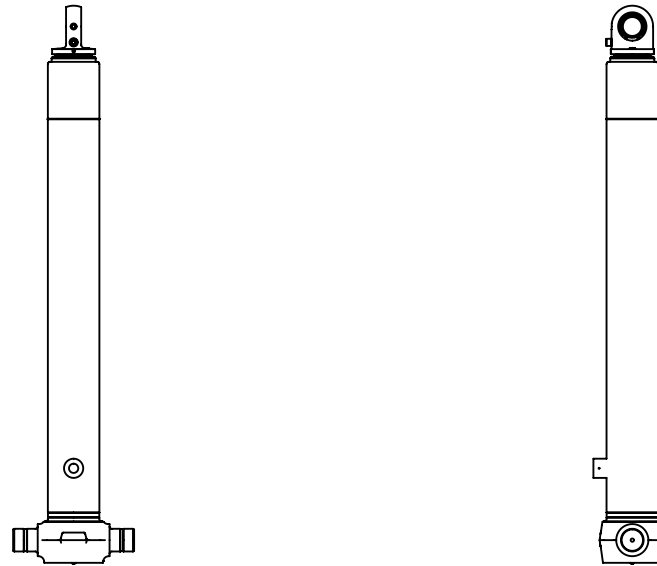
1. This cylinder is for lifting purposes only and side load conditions should be avoided
2. Cylinder is painted in primer paint to RAL5013
3. Refer to www.edbro.com for:-
 - Bracket details
 - Installation instructions that must be observed
 - Correct oil selection
 - An explanation of tipping capacity

*Includes 9mm Pull Out. Last Stage Chrome Plated



Edbro plc
 Nelson Street, Bolton, England, BL3 2JJ
 Tel +44 (0) 1204 528888 Fax +44 (0) 1204 531957
 Email: postmaster@edbro.com Web: www.edbro.com

Technical Specifications are subject to change without notice
 Date Created/Updated: 13 October 2014
 Refer www.edbro.com to confirm latest specification
 All dimensions are in 'mm', unless otherwise stated



CS110S33344B19A01