

Cylinder 3 stage front end with spherical eye

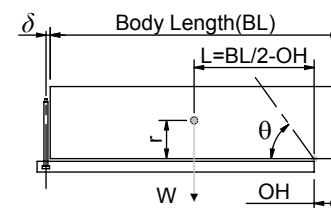
CS110S33494B19A04

SPECIFICATION **RATED CAPACITY : 20-32 TONNES*****

Stage	Diameter	Length	Stroke	Swept Volume
-	-	-	-	-
-	-	-	-	-
-	-	-	-	-
0	136	1375	-	-
1	117	1340	1154	12
2	98	1340	1167	9
3	79	1415	1172	6
Final stroke reduced by	0	Total (+5/-10)	3493	27
Cylinder Mass (Kg)	78.11	Priming Volume		9.1
Rated Pressure (Bar)	150	Total Volume (Litres)		36.1
Maximum Pressure (Bar)	175	Max. first stage thrust	150 KN	

*****TIPPING CAPACITY AT RATED PRESSURE**

d = 178 ; r = 750



BODY LENGTH (BL)					OH	
4750	4875	5000				
21	46°	21	44°	20	43°	150
25	49°	24	48°	24	46°	450
32	54°	30	52°	29	50°	750

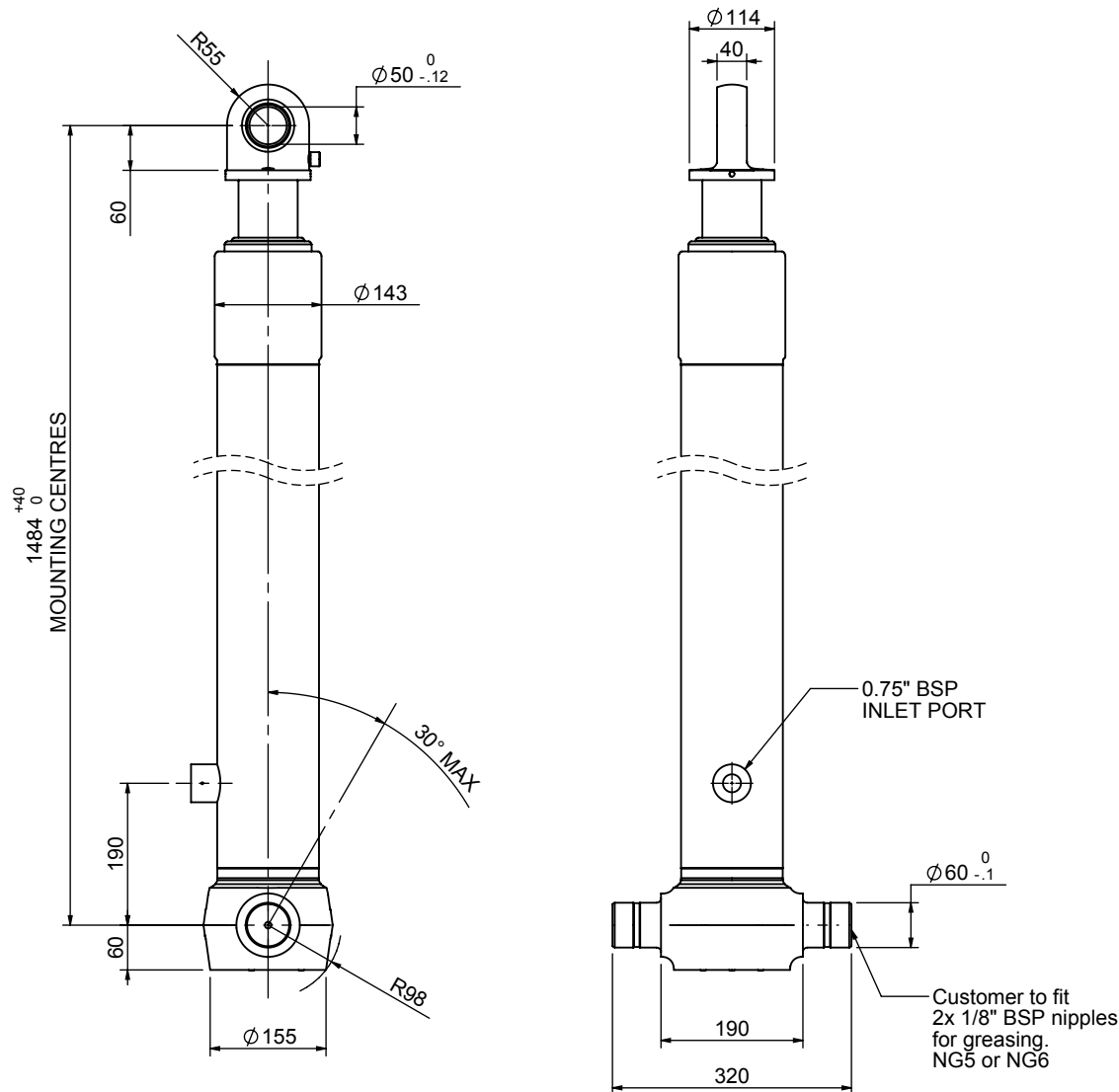
Tipping angle (θ)
Body + payload mass, W (tonne)

For guidance only;

Higher Rated Pressures may be possible. To check your application, email Edbro plc at <applications@edbro.co.uk>

NOTES

- If hydraulic pressure is used to limit overloading, the system relief valve must be set to the Rated Pressure unless agreed otherwise by Edbro
- The system relief valve can be set to Maximum Pressure if the load is limited by other means. See RATINGS page for advice
- This cylinder is for lifting purposes only and sload conditions must be avoided
- Cylinder is painted in primer paint to RAL5013
- See bracket options page BRKT01, BRKT02
- See installation instructions INSTALL01
- Use oil according to specification OIL01



*Include 9mm Pull Out



Edbro plc
Nelson Street, Bolton, Lancashire BL3 2JJ UK
Tel +44 (0) 1204 528888 Fax +44 (0) 1204 531957
Email: postmaster@edbro.com Web: www.edbro.com

Technical Specifications are subject to change without notice
Date Created/Updated: 03 March 2011 12:06:10
Refer www.edbro.com to confirm latest specification
All dimensions are in 'mm', unless otherwise stated