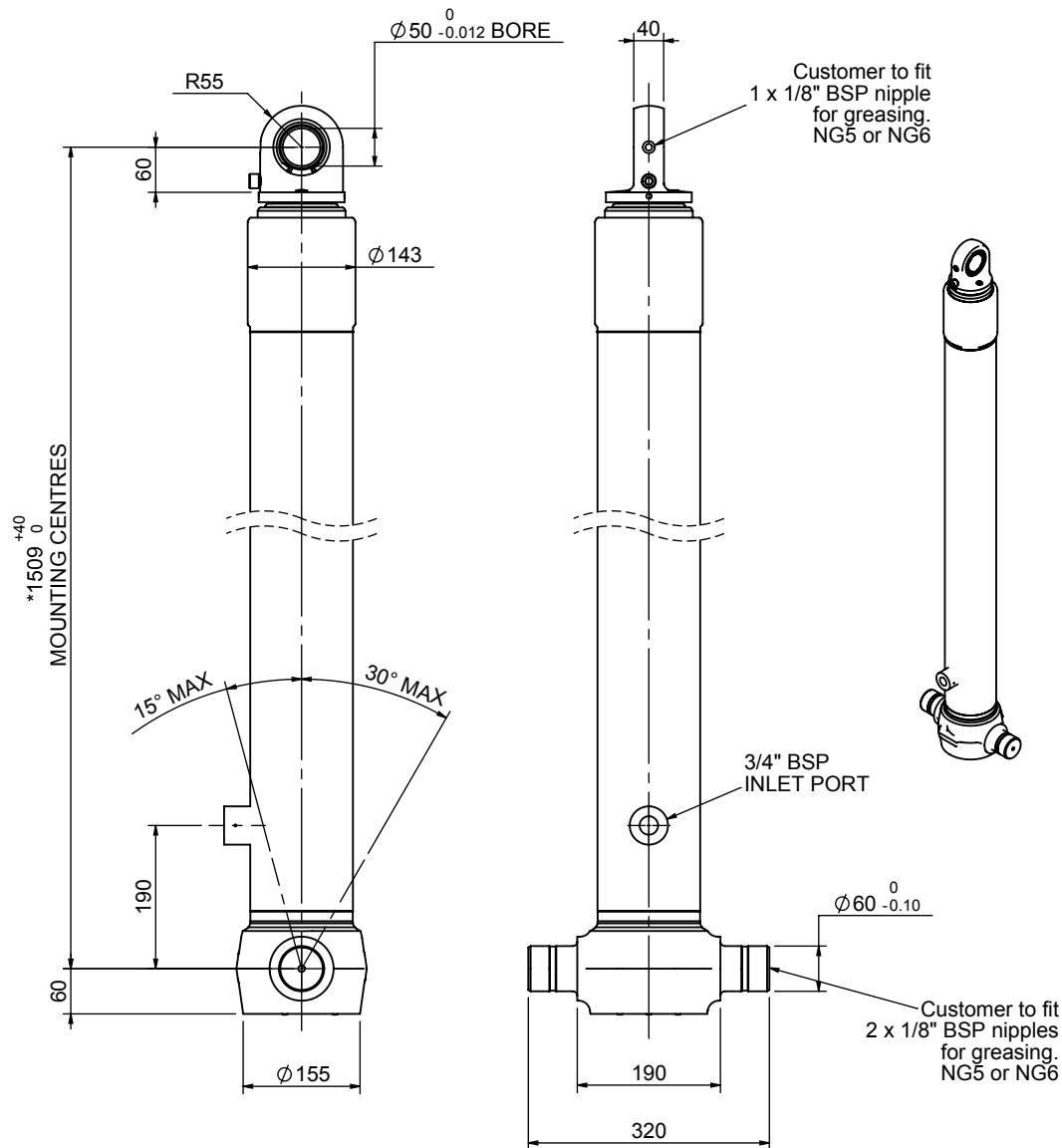


Cylinder 3 stage front end with spherical eye

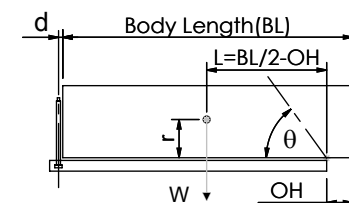
CS110S33794B19A01



SPECIFICATION

SPECIFICATION		TIPPING CAPACITY : 18-28 TONNES***		
Stage	Diameter	Length	Stroke	Swept Volume
-	-	-	-	-
-	-	-	-	-
-	-	-	-	-
0	136	1475	-	-
1	117	1440	1254	13
2	98	1440	1267	10
3	79	1440	1272	6
Total (+5/-10)			4825	29
Final stroke reduced by	0	Priming Volume		10
Cylinder Mass (Kg)	89	Total Volume (Litres)		39
Maximum Pressure (Bar)	190	Max. first stage thrust		130 KN

***TIPPING CAPACITY AT WORKING PRESSURE



BODY LENGTH (BL)						OH
5000		5125		5250		
19	47°	19	46°	18	45°	150
22	51°	22	49°	21	48°	450
28	55°	26	53°	25	51°	750

$d = 0$; $r = 750$; Working Pressure 135 bar
For guidance only;
 Higher working pressures and tipping capacities may be possible.
 To check your application email - applications@edbro.co.uk

NOTES

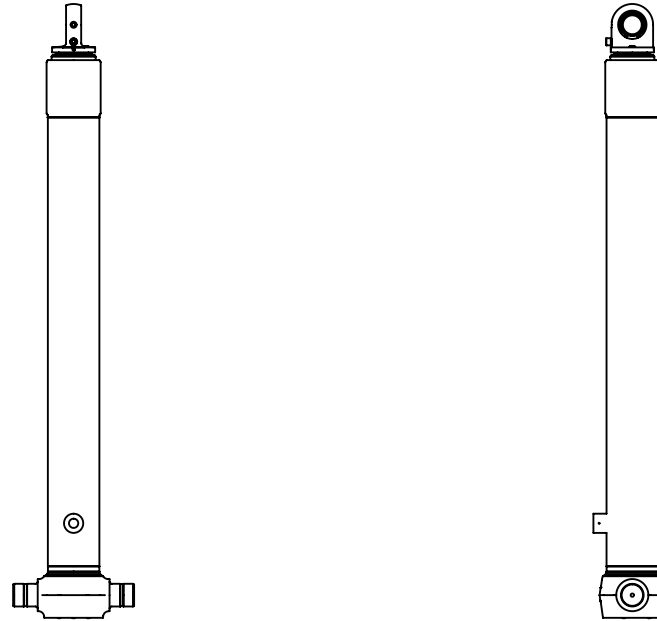
- This cylinder is for lifting purposes only and side load conditions should be avoided
- Cylinder is painted in primer paint to RAL5013
- Refer to www.edbro.com for:-
 - Bracket details
 - Installation instructions that must be observed
 - Correct oil selection
 - An explanation of tipping capacity

*Includes 9mm Pull Out.
 Last Stage Chrome Plated



Edbro plc
 Nelson Street, Bolton, England, BL3 2JJ
 Tel +44 (0) 1204 528888 Fax +44 (0) 1204 531957
 Email: postmaster@edbro.com Web: www.edbro.com

Technical Specifications are subject to change without notice
 Date Created/Updated: 17 September 2012
 Refer www.edbro.com to confirm latest specification
 All dimensions are in 'mm', unless otherwise stated



CS110S33794B19A01