

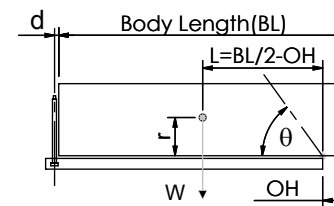
# Cylinder 3 stage front end with spherical eye

CS110S33944B19A01

**SPECIFICATION** **TIPPING CAPACITY : 18-27 TONNES\*\*\***

Stage	Diameter	Length	Stroke	Swept Volume
-	-	-	-	-
-	-	-	-	-
-	-	-	-	-
0	136	1525	-	-
1	117	1490	1304	14
2	98	1490	1317	10
3	79	1490	1322	6
Total (+5/-10)			3943	30
Final stroke reduced by	0	Priming Volume		10
Cylinder Mass (Kg)	92	Total Volume (Litres)		40
Maximum Pressure (Bar)	190	Max. first stage thrust		130 KN

**\*\*\*TIPPING CAPACITY AT WORKING PRESSURE**



BODY LENGTH (BL)						OH
5150	5275	5400				
19	48°	19	46°	18	45°	150
22	51°	22	50°	21	48°	450
27	55°	26	53°	25	52°	750

d = 0; r = 750; Working Pressure 135 bar

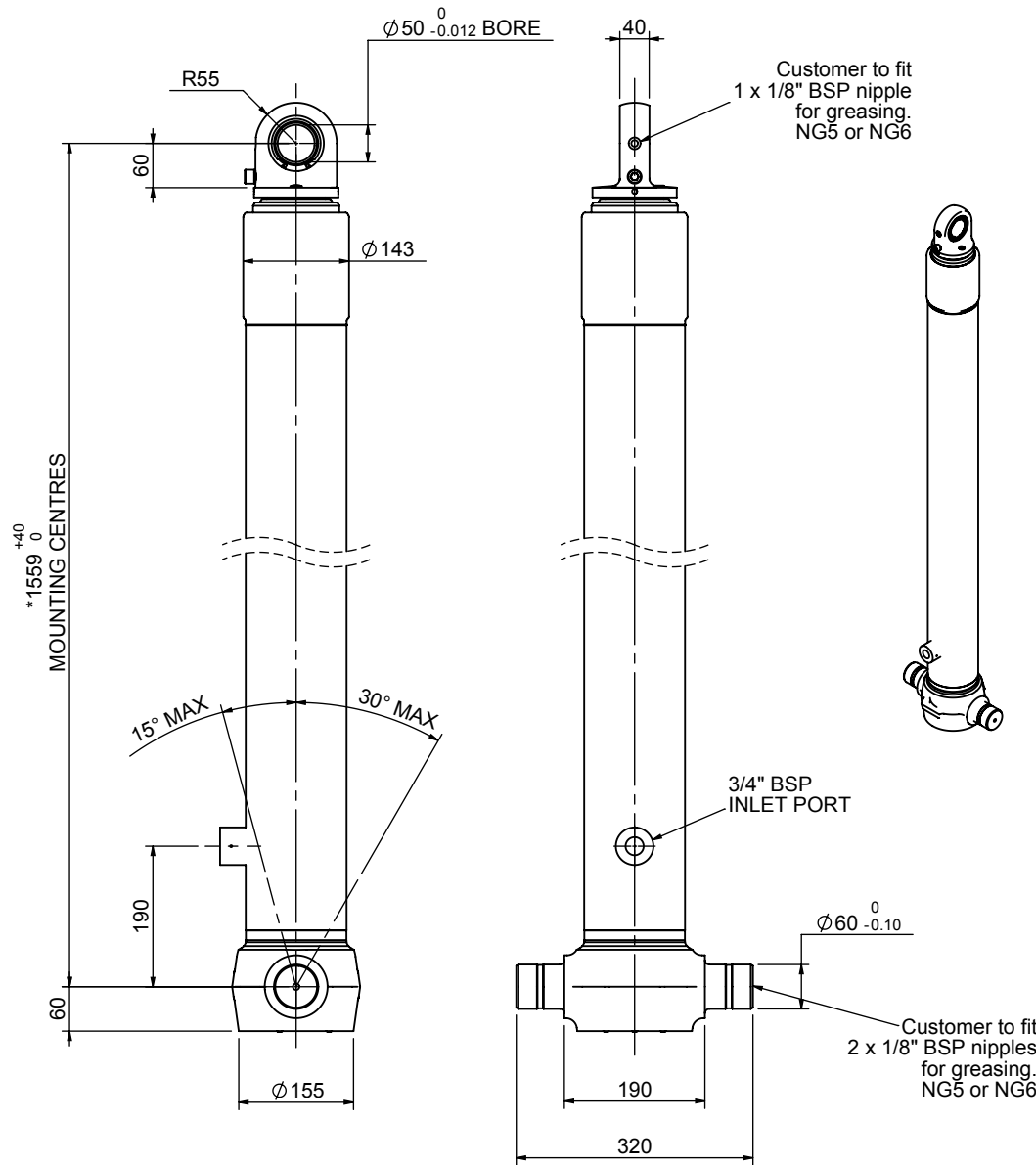
**For guidance only;**

Higher working pressures and tipping capacities may be possible.

To check your application email - [applications@edbro.co.uk](mailto:applications@edbro.co.uk)

**NOTES**

1. This cylinder is for lifting purposes only and side load conditions should be avoided
2. Cylinder is painted in primer paint to RAL5013
3. Refer to [www.edbro.com](http://www.edbro.com) for:-
  - Bracket details
  - Installation instructions that must be observed
  - Correct oil selection
  - An explanation of tipping capacity

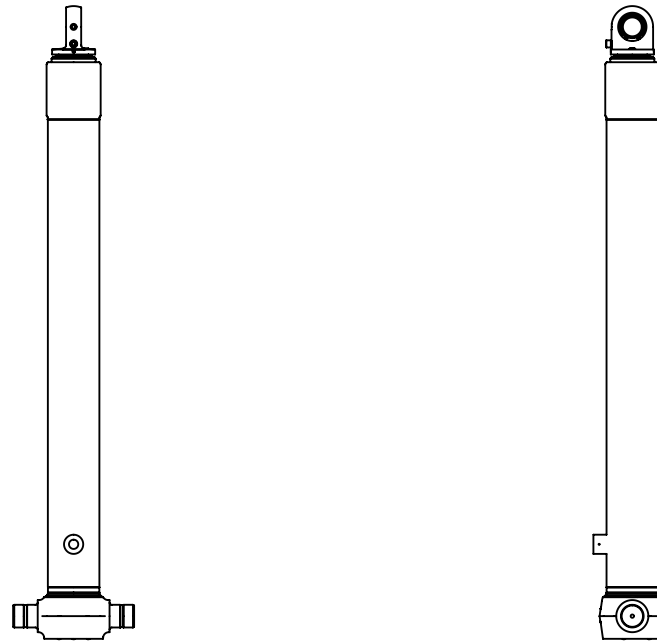


\*Includes 9mm Pull Out.  
Last Stage Chrome Plated



**Edbro plc**  
Nelson Street, Bolton, England, BL3 2JJ  
Tel +44 (0) 1204 528888 Fax +44 (0) 1204 531957  
Email: [postmaster@edbro.com](mailto:postmaster@edbro.com) Web: [www.edbro.com](http://www.edbro.com)

Technical Specifications are subject to change without notice  
Date Created/Updated: 17 September 2012  
Refer [www.edbro.com](http://www.edbro.com) to confirm latest specification  
All dimensions are in 'mm', unless otherwise stated



CS110S33944B19A01