

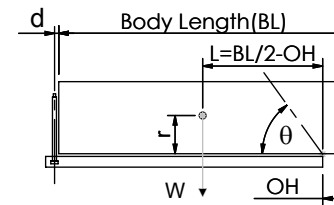
Cylinder 3 stage front end with spherical eye

CS110S34094B19A01

SPECIFICATION **TIPPING CAPACITY : 18-27 TONNES*****

Stage	Diameter	Length	Stroke	Swept Volume
-	-	-	-	-
-	-	-	-	-
-	-	-	-	-
0	136	1575	-	-
1	117	1540	1354	15
2	98	1540	1367	10
3	79	1540	1372	7
Total (+5/-10)			4093	32
Final stroke reduced by	0	Priming Volume		11
Cylinder Mass (Kg)	94	Total Volume (Litres)		43
Maximum Pressure (Bar)	190	Max. first stage thrust		130 KN

*****TIPPING CAPACITY AT WORKING PRESSURE**



BODY LENGTH (BL)						OH
5300		5425		5550		
19	48°	19	47°	18	46°	150
22	51°	21	50°	21	49°	450
27	55°	25	54°	24	52°	750

d = 0; r = 750; Working Pressure 135 bar

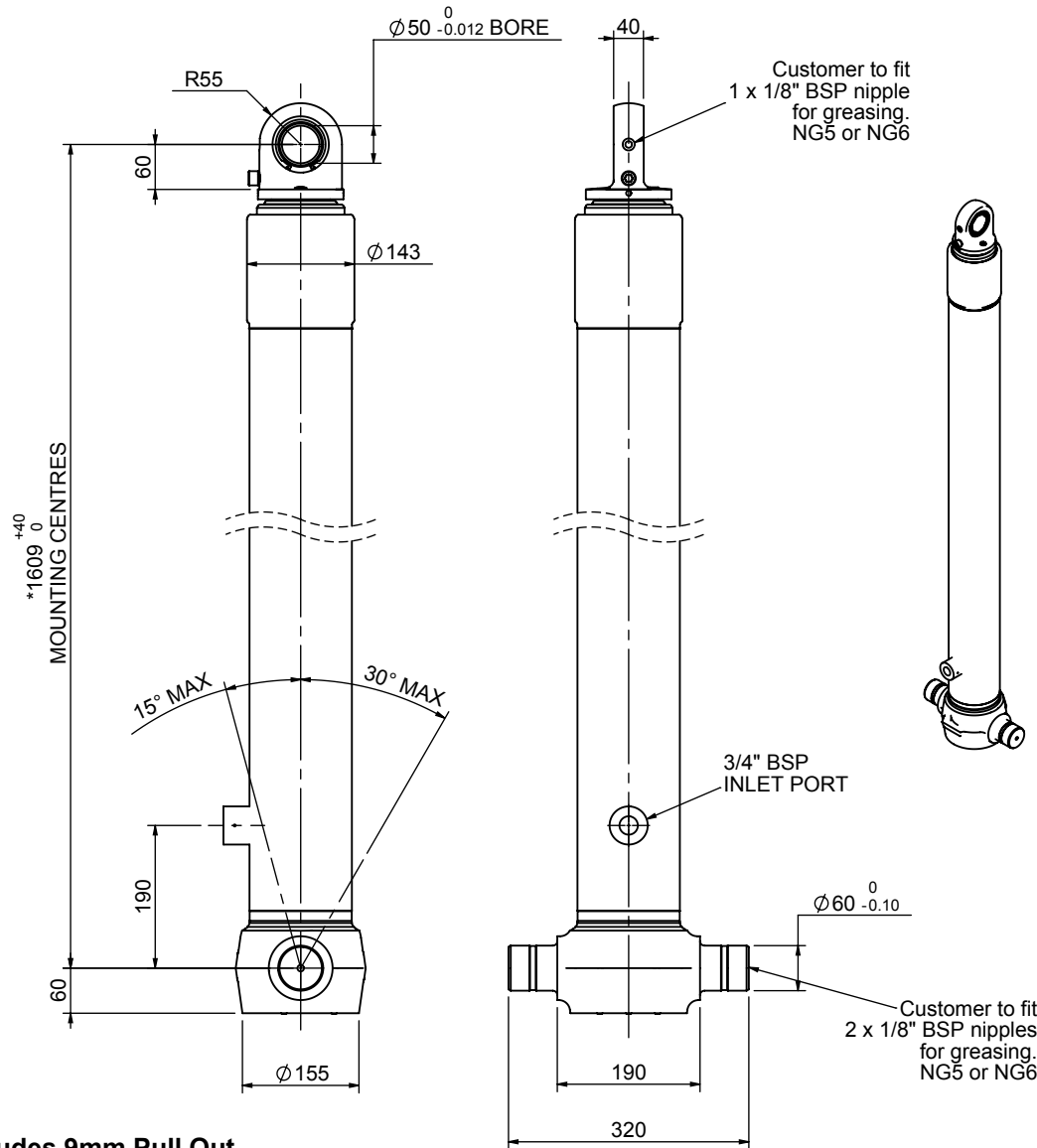
For guidance only;

Higher working pressures and tipping capacities may be possible.

To check your application email - applications@edbro.co.uk

NOTES

1. This cylinder is for lifting purposes only and side load conditions should be avoided
2. Cylinder is painted in primer paint to RAL5013
3. Refer to www.edbro.com for:-
 - Bracket details
 - Installation instructions that must be observed
 - Correct oil selection
 - An explanation of tipping capacity

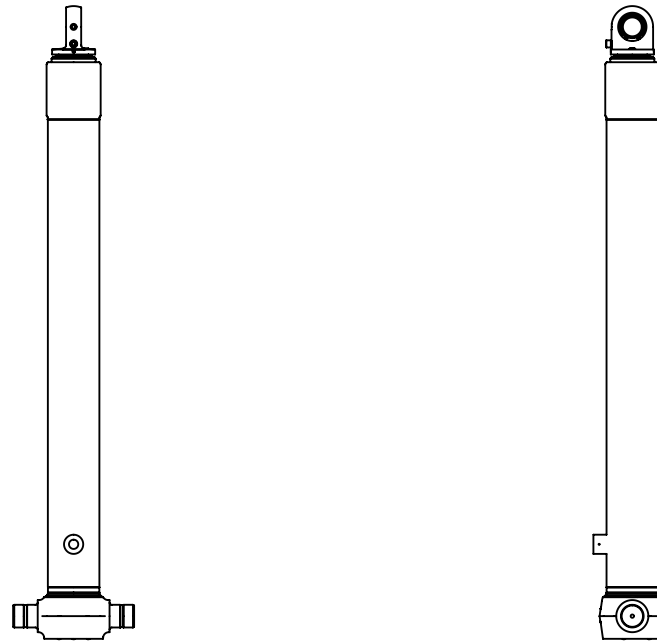


***Includes 9mm Pull Out. Last Stage Chrome Plated**



Edbro plc
 Nelson Street, Bolton, England, BL3 2JJ
 Tel +44 (0) 1204 528888 Fax +44 (0) 1204 531957
 Email: postmaster@edbro.com Web: www.edbro.com

Technical Specifications are subject to change without notice
 Date Created/Updated: 17 September 2012
 Refer www.edbro.com to confirm latest specification
 All dimensions are in 'mm', unless otherwise stated



CS110S33944B19A01