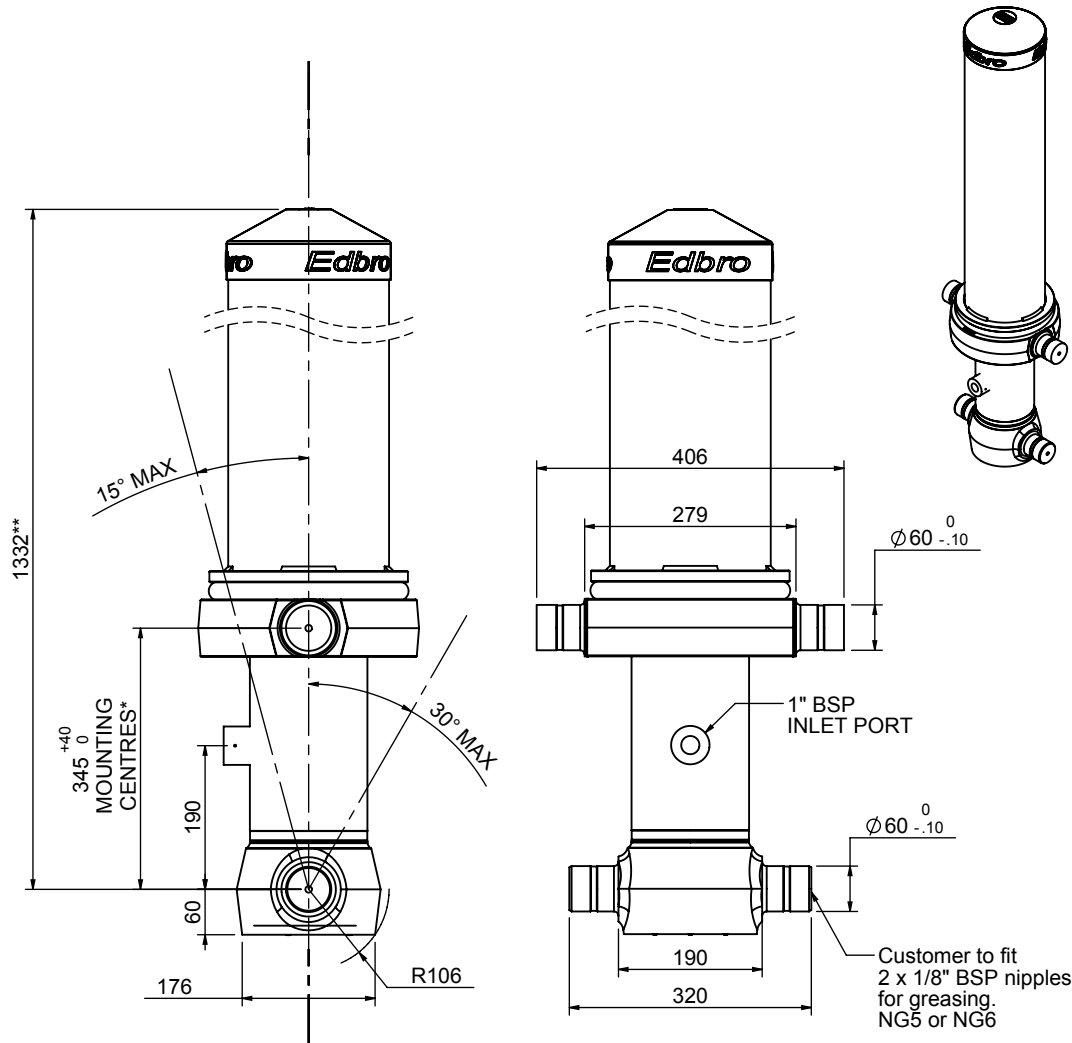


# Cylinder 3 stage front end with Outer Cover

**\*\*ALLOW 50mm TO REMOVE CAP FOR SERVICING**



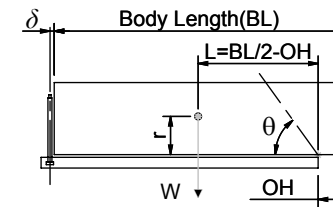
**\*Include 9mm Pull Out**

## CS130033169B19A11

SPECIFICATION		RATED CAPACITY : 27-45 TONNES***		
Stage	Diameter	Length	Stroke	Swept Volume
-	-	-	-	-
-	-	-	-	-
OUTER COVER	213	1025	-	-
0	155	1275	-	-
1	136	1240	1038	15
2	117	1240	1062	11
3	98	1240	1067	8
Final stroke reduced by	0	Total (+5/-10)	3167	34
Cylinder Mass (Kg)	152.14	Priming Volume	11.7	
Rated Pressure (Bar)	120	Total Volume (Litres)	45.7	
Maximum Pressure (Bar)	175	Max. first stage thrust	170 KN	

### \*\*\*TIPPING CAPACITY AT RATED PRESSURE

$d = 178 ; r = 750$



BODY LENGTH (BL)						OH
4200		4325		4450		
29	44°	28	43°	27	42°	150
36	48°	34	46°	33	45°	450
		45	50°	42	49°	750

Tipping angle ( $\theta$ )  
 Body + payload mass, W (tonne)

### For guidance only;

Higher Rated Pressures may be possible. To check your application, email Edbro plc at <applications@edbro.co.uk>

### NOTES

- If hydraulic pressure is used to limit overloading, the system relief valve must be set to the Rated Pressure unless agreed otherwise by Edbro
- The system relief valve can be set to Maximum Pressure if the load is limited by other means. See RATINGS page for advice
- This cylinder is for lifting purposes only and sload conditions must be avoided
- Cylinder is painted in primer paint to RAL5013
- See bracket options page BRKT01, BRKT02
- See installation instructions INSTALL01
- Use oil according to specification OIL01