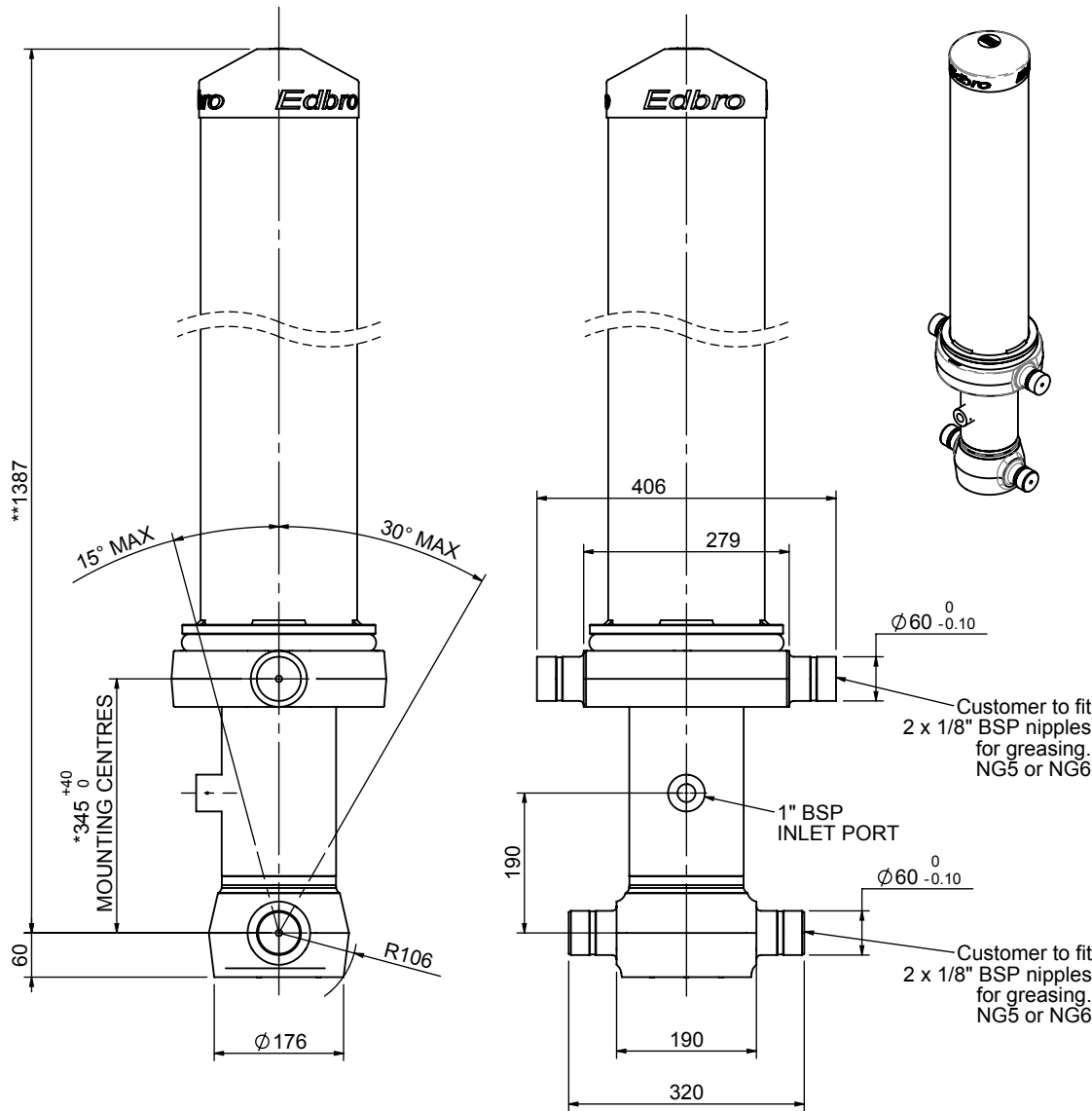


Cylinder 3 stage front end with outer cover

****ALLOW 50mm TO REMOVE CAP FOR SERVICING**

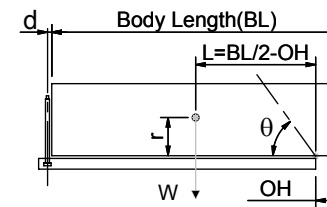


*Includes 14mm Pull Out.

CS130033319B19A11

SPECIFICATION		TIPPING CAPACITY : 27-47 TONNES***		
Stage	Diameter	Length	Stroke	Swept Volume
-	-	-	-	-
-	-	-	-	-
OUTER COVER	213	1000	-	-
0	155	1325	-	-
1	136	1290	1083	16
2	117	1290	1112	12
3	98	1290	1117	8
Total (+5/-10)			3312	36
Final stroke reduced by	0	Priming Volume		12
Cylinder Mass (Kg)	157	Total Volume (Litres)		48
Maximum Pressure (Bar)	190	Max. first stage thrust		170 KN

***TIPPING CAPACITY AT WORKING PRESSURE



BODY LENGTH (BL)						OH
4350	4475	4600				
29	45°	28	44°	27	42°	150
35	48°	33	47°	32	45°	450
47	53°	43	51°	41	49°	750

$d = 178$; $r = 750$; Working Pressure 120 bar

Tipping angle (θ)

Body + payload mass, W (tonne)

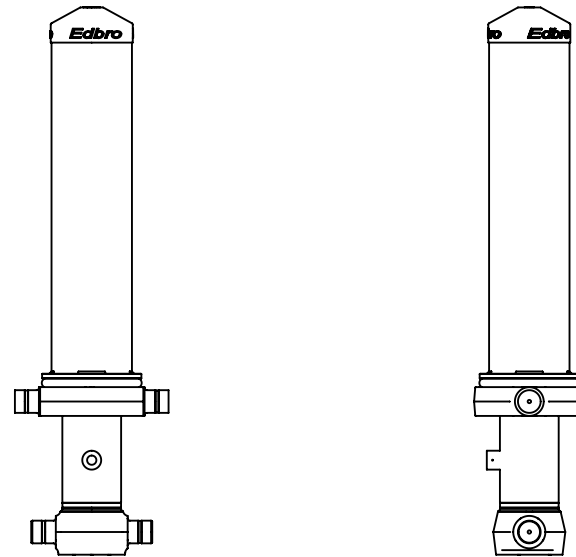
For guidance only;

Higher working pressures and tipping capacities may be possible.

To check your application email - applications@edbro.co.uk

NOTES

1. This cylinder is for lifting purposes only and side load conditions should be avoided
2. Cylinder is painted in primer paint to RAL5013
3. Refer to www.edbro.com for;-
 - Bracket details
 - Installation instructions that must be observed
 - Correct oil selection
 - An explanation of tipping capacity



CS130033319B19A11