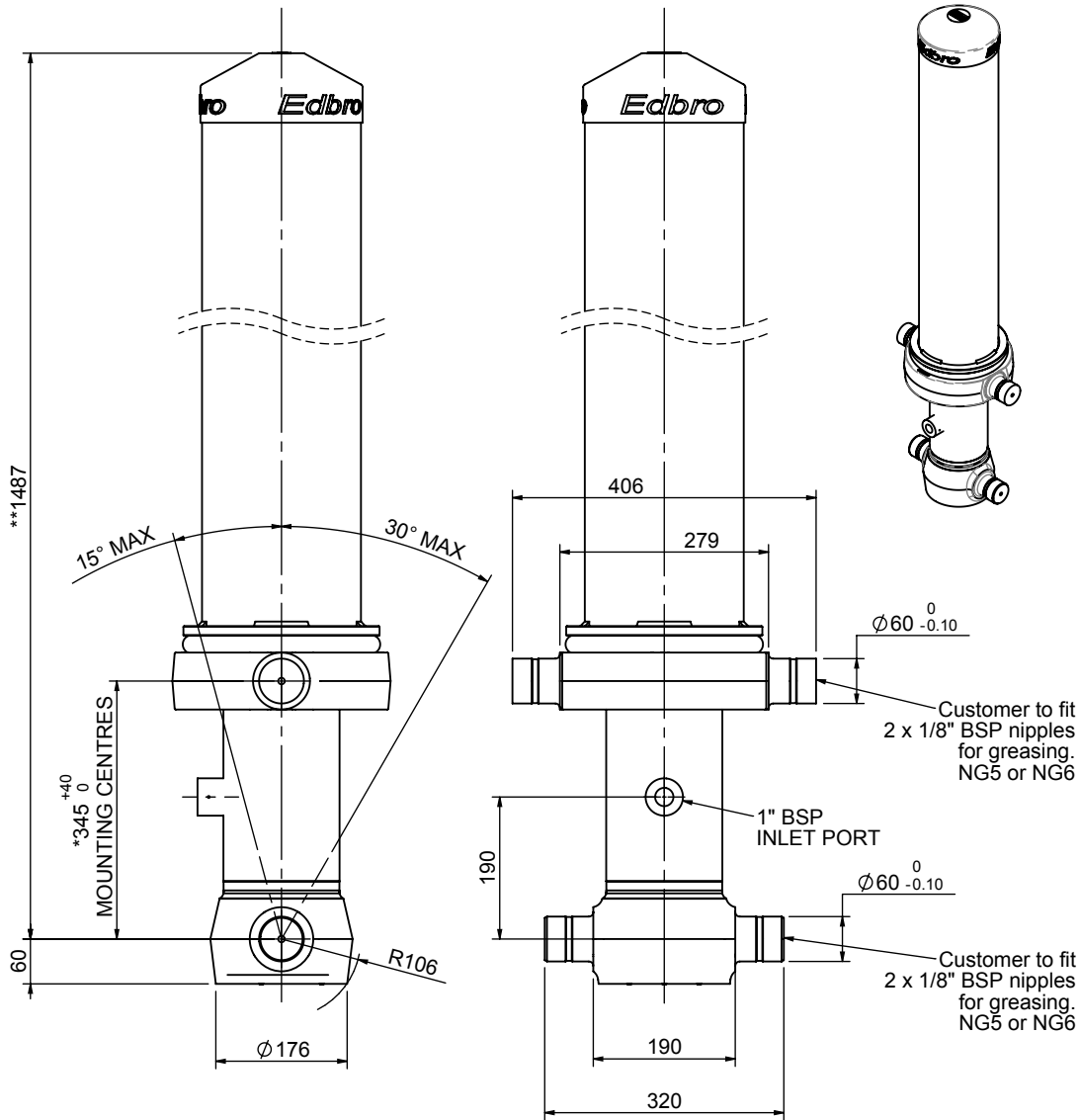


Cylinder 3 stage front end with outer cover

****ALLOW 50mm TO REMOVE CAP FOR SERVICING**

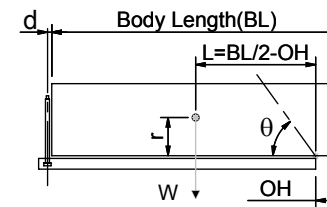


*Includes 14mm Pull Out.

CS130033619B19A11

SPECIFICATION		TIPPING CAPACITY : 27-43 TONNES***		
Stage	Diameter	Length	Stroke	Swept Volume
-	-	-	-	-
-	-	-	-	-
OUTER COVER	213	1100	-	-
0	155	1425	-	-
1	136	1390	1183	17
2	117	1390	1212	13
3	98	1390	1217	9
Total (+5/-10)			3612	39
Final stroke reduced by	0	Priming Volume		13
Cylinder Mass (Kg)	166	Total Volume (Litres)		52
Maximum Pressure (Bar)	190	Max. first stage thrust		170 KN

***TIPPING CAPACITY AT WORKING PRESSURE



BODY LENGTH (BL)						OH
4650	4775	4900				
28	46°	28	45°	27	43°	150
34	49°	32	48°	31	46°	450
43	53°	41	51°	39	50°	750

d = 178; r = 750; Working Pressure 120 bar

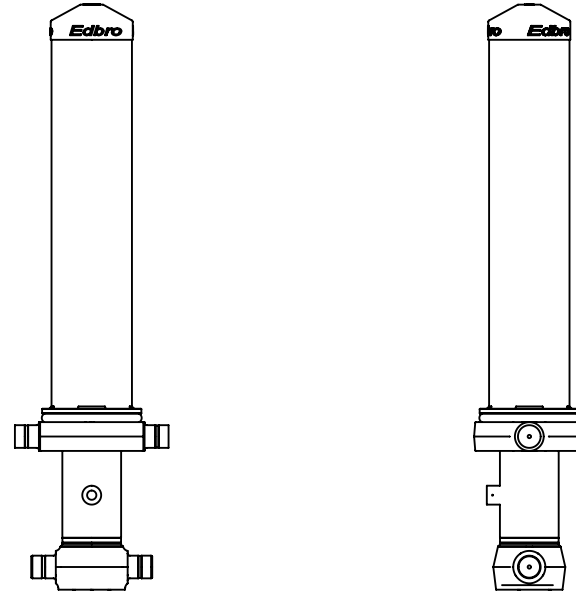
Tipping angle (θ)
Body + payload mass, W (tonne)

For guidance only;

Higher working pressures and tipping capacities may be possible.
To check your application email - applications@edbro.co.uk

NOTES

1. This cylinder is for lifting purposes only and side load conditions should be avoided
2. Cylinder is painted in primer paint to RAL5013
3. Refer to www.edbro.com for:-
 - Bracket details
 - Installation instructions that must be observed
 - Correct oil selection
 - An explanation of tipping capacity



CS130033619B19A11