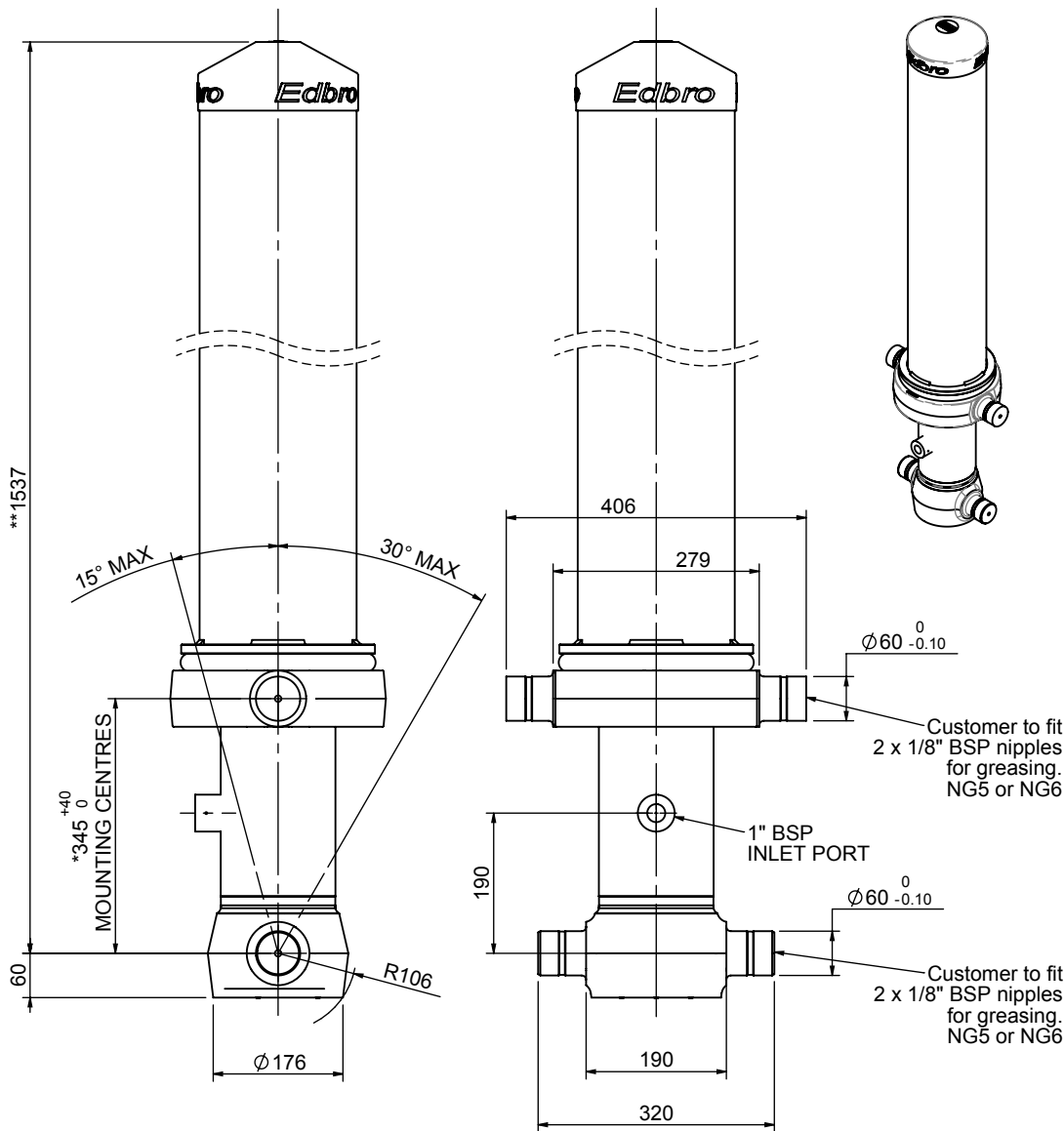


# Cylinder 3 stage front end with outer cover

**\*\*ALLOW 50mm TO REMOVE CAP FOR SERVICING**



\*Includes 14mm Pull Out.

# CS130033769B19A11

SPECIFICATION		TIPPING CAPACITY : 27-42 TONNES***		
Stage	Diameter	Length	Stroke	Swept Volume
-	-	-	-	-
-	-	-	-	-
OUTER COVER	213	1150	-	-
0	155	1475	-	-
1	136	1440	1233	18
2	117	1440	1262	14
3	98	1440	1267	10
Total (+5/-10)			3762	42
Final stroke reduced by	0	Priming Volume		14
Cylinder Mass (Kg)	170	Total Volume (Litres)		56
Maximum Pressure (Bar)	190	Max. first stage thrust		170 KN

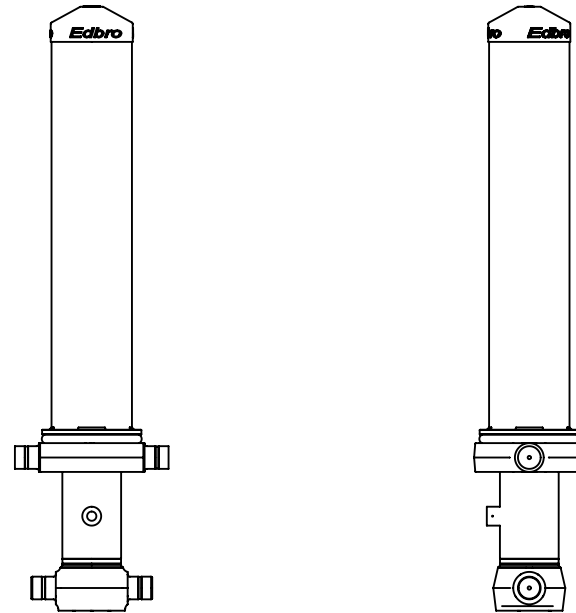
**\*\*\*TIPPING CAPACITY AT WORKING PRESSURE**

BODY LENGTH (BL)						OH
4800	4925	5050				
28	46°	27	45°	27	44°	150
33	50°	32	48°	31	47°	450
42	53°	40	52°	38	50°	750

$d = 178; r = 750; \text{Working Pressure } 120 \text{ bar}$

**For guidance only;**  
Higher working pressures and tipping capacities may be possible.  
To check your application email - [applications@edbro.co.uk](mailto:applications@edbro.co.uk)

- NOTES**
1. This cylinder is for lifting purposes only and side load conditions should be avoided
  2. Cylinder is painted in primer paint to RAL5013
  3. Refer to [www.edbro.com](http://www.edbro.com) for:-
    - Bracket details
    - Installation instructions that must be observed
    - Correct oil selection
    - An explanation of tipping capacity



CS130033769B19A11