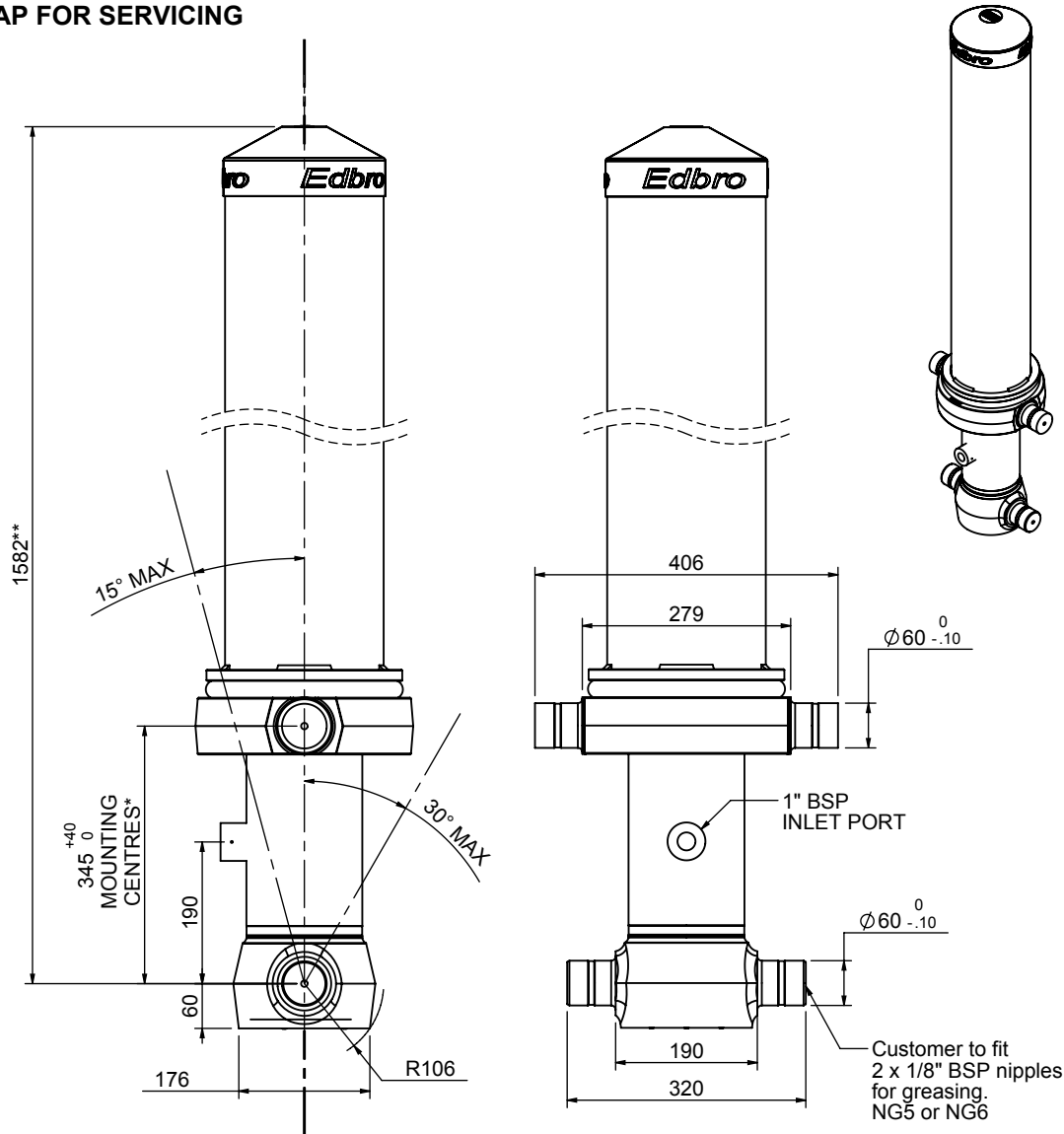


# Cylinder 3 stage front end with Outer Cover

**\*\*ALLOW 50mm TO REMOVE CAP FOR SERVICING**



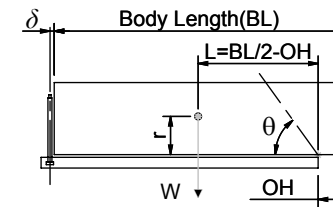
**\*Include 9mm Pull Out**

## CS130033919B19A11

SPECIFICATION		RATED CAPACITY : 26-42 TONNES***		
Stage	Diameter	Length	Stroke	Swept Volume
-	-	-	-	-
-	-	-	-	-
OUTER COVER	213	1275	-	-
0	155	1525	-	-
1	136	1490	1288	19
2	117	1490	1312	14
3	98	1490	1317	10
Final stroke reduced by	0	Total (+5/-10)	3917	43
Cylinder Mass (Kg)	173.78	Priming Volume	14.4	
Rated Pressure (Bar)	120	Total Volume (Litres)	57.4	
Maximum Pressure (Bar)	175	Max. first stage thrust	170 KN	

### \*\*\*TIPPING CAPACITY AT RATED PRESSURE

$d = 178 ; r = 750$



BODY LENGTH (BL)						OH
4900		5150		5400		
28	47°	27	45°	26	43°	150
33	50°	31	48°	29	45°	450
42	54°	38	51°	35	48°	750

### For guidance only;

Higher Rated Pressures may be possible. To check your application, email Edbro plc at <applications@edbro.co.uk>

### NOTES

- If hydraulic pressure is used to limit overloading, the system relief valve must be set to the Rated Pressure unless agreed otherwise by Edbro
- The system relief valve can be set to Maximum Pressure if the load is limited by other means. See RATINGS page for advice
- This cylinder is for lifting purposes only and sideload conditions must be avoided
- Cylinder is painted in primer paint to RAL5013
- See bracket options page BRKT01, BRKT02
- See installation instructions INSTALL01
- Use oil according to specification OIL01

**Edbro**  
SETTING THE INDUSTRY STANDARD

**Edbro plc**  
Nelson Street, Bolton, Lancashire BL3 2JJ UK  
Tel +44 (0) 1204 528888 Fax +44 (0) 1204 531957  
Email: postmaster@edbro.com Web: www.edbro.com

Technical Specifications are subject to change without notice  
Date Created/Updated: 22 December 2009 16:00:08  
Refer www.edbro.com to confirm latest specification  
All dimensions are in 'mm', unless otherwise stated