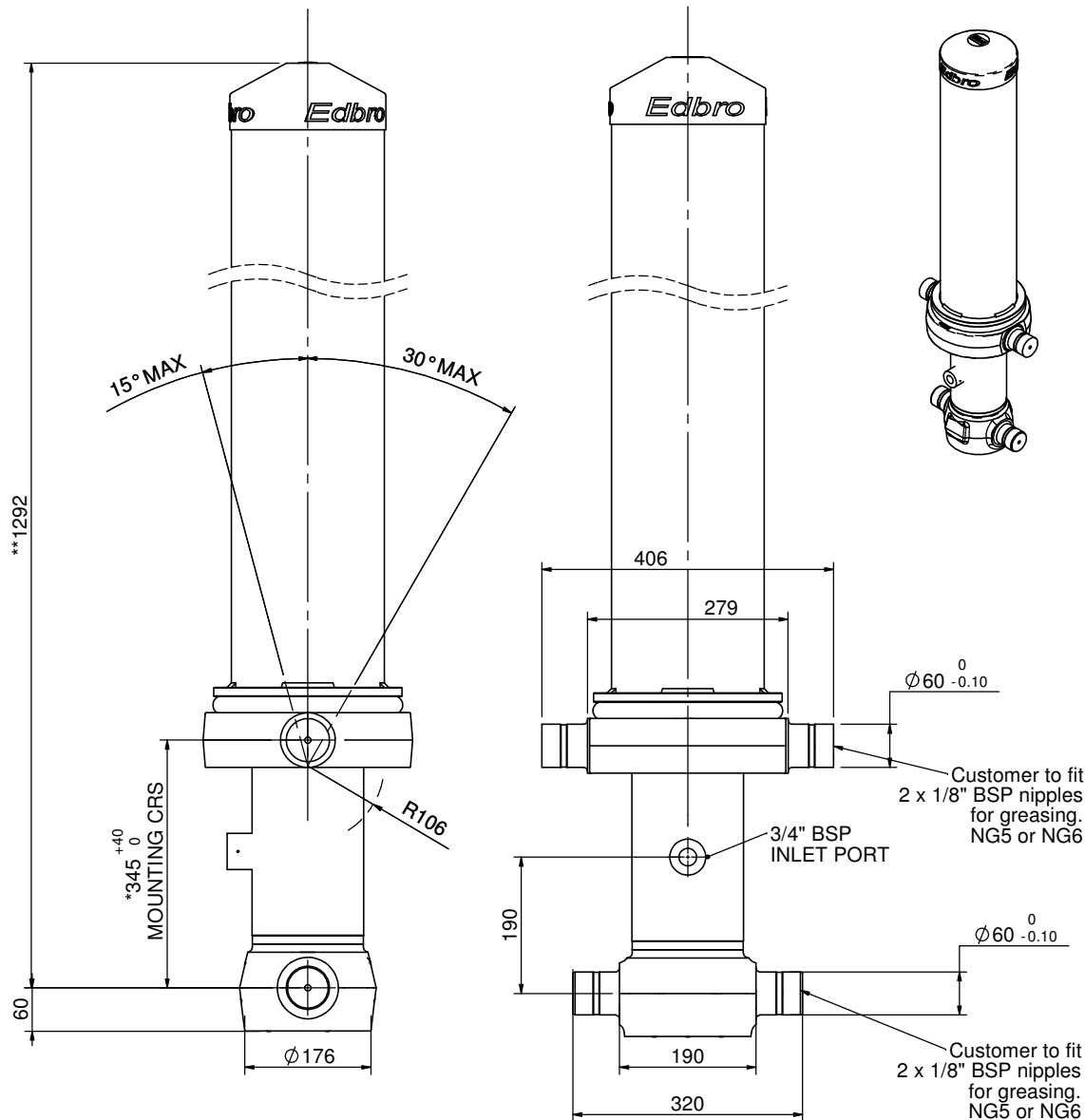


Cylinder 4 stage front end with outer cover

****ALLOW 50mm TO REMOVE CAP FOR SERVICING**

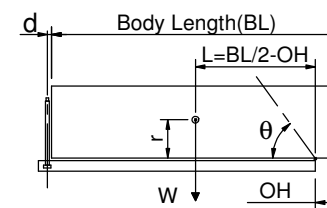


***Includes 14mm Pull Out.**

CS130044041B19A11

SPECIFICATION		TIPPING CAPACITY : 27-42 TONNES***		
Stage	Diameter	Length	Stroke	Swept Volume
-	-	-	-	-
OUTER COVER	213	905	-	-
0	155	1225	-	-
1	136	1190	983	14
2	117	1190	1012	11
3	98	1190	1017	8
4	79	1190	1022	5
Total (+5/-10)			4034	38
Final stroke reduced by	0	Priming Volume		10
Cylinder Mass (Kg)	156	Total Volume (Litres)		48
Maximum Pressure (Bar)	190	Max. first stage thrust		170 KN

***TIPPING CAPACITY AT WORKING PRESSURE



BODY LENGTH (BL)						OH
4900		5150		5400		
30	49°	28	46°	27	44°	150
36	52°	33	49°	31	47°	450
		42	53°	37	50°	750

$d = 178$; $r = 750$; Working Pressure 175 bar

Tipping angle (θ)

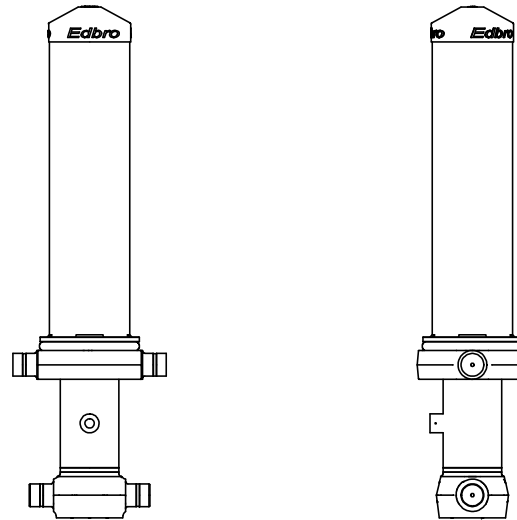
For guidance only;

Higher working pressures and tipping capacities may be possible.

To check your application email - applications@edbro.co.uk

NOTES

1. This cylinder is for lifting purposes only and side load conditions should be avoided
2. Cylinder is painted in primer paint to RAL5013
3. Refer to www.edbro.com for:-
 - Bracket details
 - Installation instructions that must be observed
 - Correct oil selection
 - An explanation of tipping capacity



CS130044041B19A11