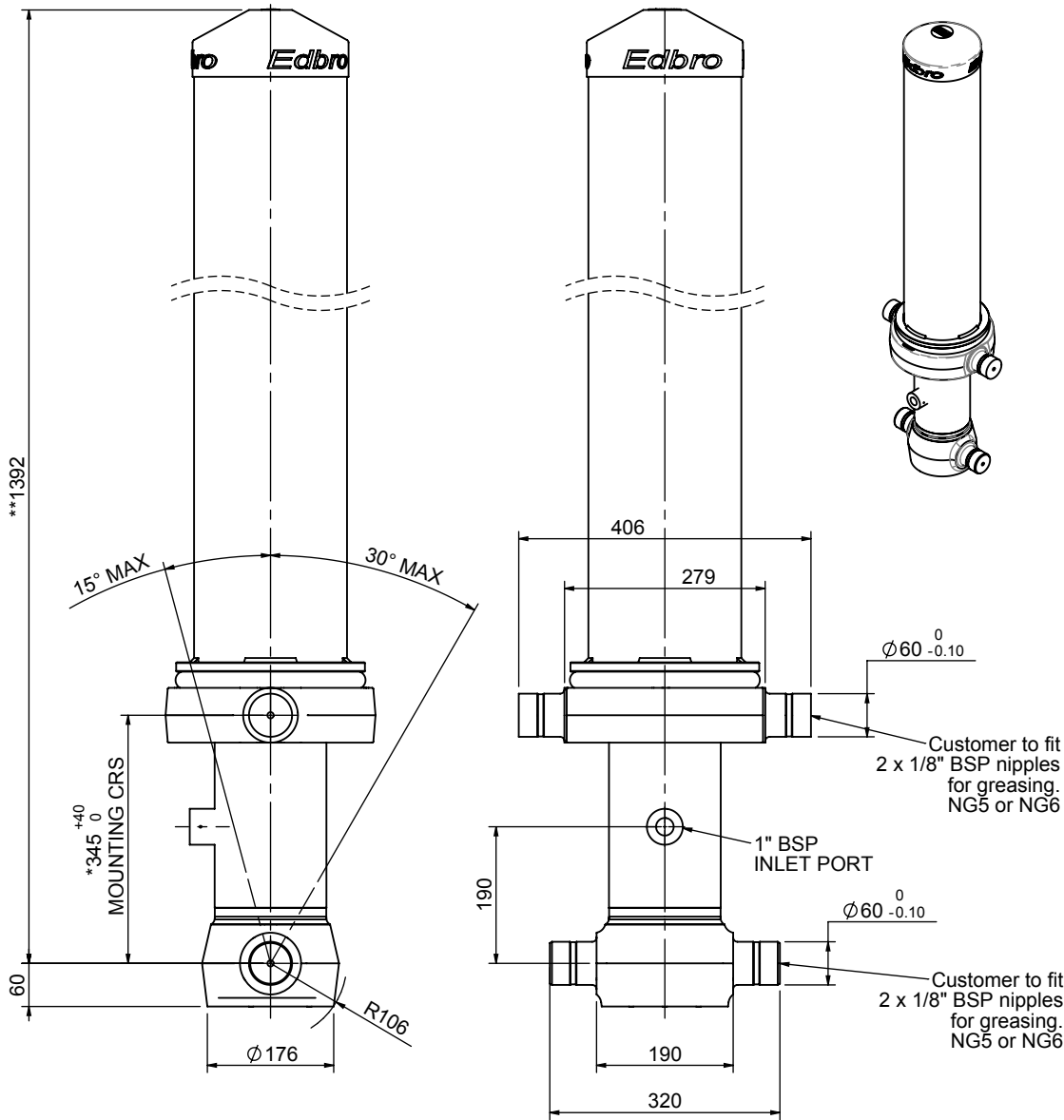


# Cylinder 4 stage front end with outer cover

**\*\*ALLOW 50mm TO REMOVE CAP FOR SERVICING**

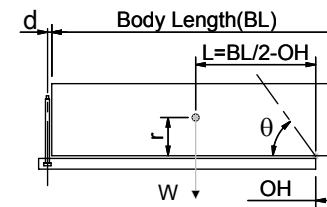


\*Includes 14mm Pull Out.

## CS130044441B19A11

SPECIFICATION		TIPPING CAPACITY : 26-40 TONNES***		
Stage	Diameter	Length	Stroke	Swept Volume
-	-	-	-	-
OUTER COVER	213	1005	-	-
0	155	1325	-	-
1	136	1290	1083	16
2	117	1290	1112	12
3	98	1290	1117	8
4	79	1290	1122	6
Total (+5/-10)			4434	42
Final stroke reduced by	0	Priming Volume		11
Cylinder Mass (Kg)	167	Total Volume (Litres)		53
Maximum Pressure (Bar)	190	Max. first stage thrust		170 KN

### \*\*\*TIPPING CAPACITY AT WORKING PRESSURE



BODY LENGTH (BL)						OH
5500		5750		6000		
28	48°	27	45°	26	43°	150
33	51°	30	48°	29	46°	450
40	54°	36	51°	34	49°	750

d = 178; r = 750; Working Pressure 175 bar

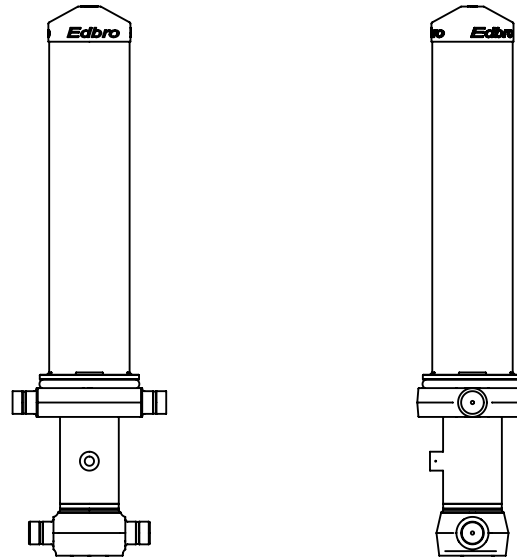
Tipping angle ( $\theta$ )  
Body + payload mass, W (tonne)

### For guidance only;

Higher working pressures and tipping capacities may be possible.  
To check your application email - [applications@edbro.co.uk](mailto:applications@edbro.co.uk)

### NOTES

1. This cylinder is for lifting purposes only and side load conditions should be avoided
2. Cylinder is painted in primer paint to RAL5013
3. Refer to [www.edbro.com](http://www.edbro.com) for;-
  - Bracket details
  - Installation instructions that must be observed
  - Correct oil selection
  - An explanation of tipping capacity



CS130044441B19A11