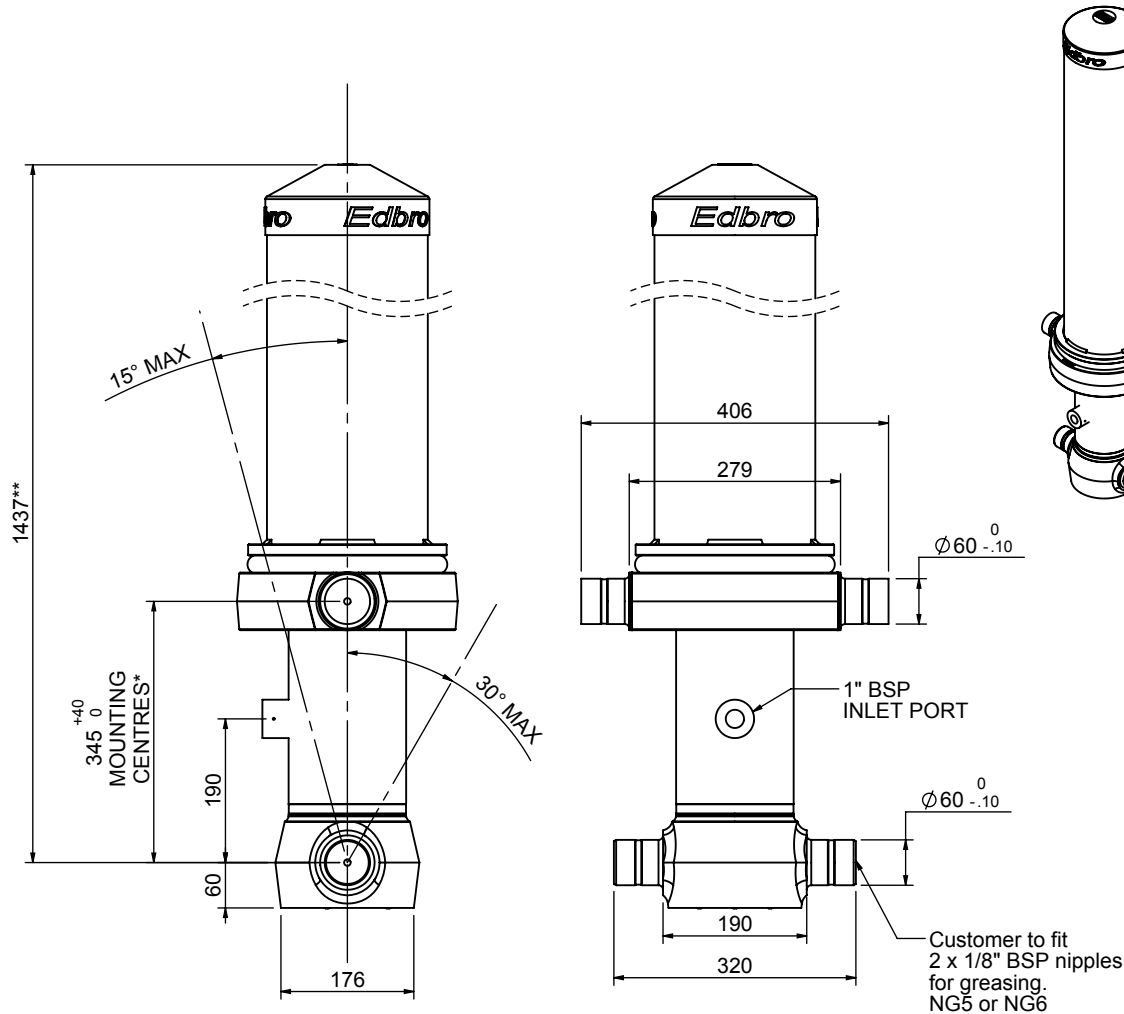


# Cylinder 4 stage front end with Outer Cover

**\*\*ALLOW 50mm TO REMOVE CAP FOR SERVICING**

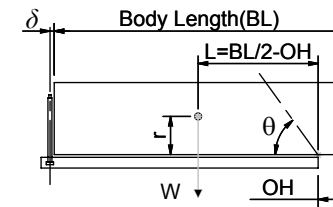


## CS130044641B19A11C

| SPECIFICATION           |          | RATED CAPACITY : 25-38 TONNES*** |        |              |
|-------------------------|----------|----------------------------------|--------|--------------|
| Stage                   | Diameter | Length                           | Stroke | Swept Volume |
| -                       | -        | -                                | -      | -            |
| OUTER COVER             | 213      | 1040                             | -      | -            |
| 0                       | 155      | 1375                             | -      | -            |
| 1                       | 136      | 1340                             | 1138   | 17           |
| 2                       | 117      | 1340                             | 1162   | 12           |
| 3                       | 98       | 1340                             | 1167   | 9            |
| 4                       | 79       | 1340                             | 1172   | 6            |
| Final stroke reduced by | 0        | Total (+5/-10)                   | 4639   | 44           |
| Cylinder Mass (Kg)      | 167.87   | Priming Volume                   | 11.6   |              |
| Rated Pressure (Bar)    | 175      | Total Volume (Litres)            | 55.6   |              |
| Maximum Pressure (Bar)  | 175      | Max. first stage thrust          | 170 KN |              |

### \*\*\*TIPPING CAPACITY AT RATED PRESSURE

$d = 178 ; r = 750$



| BODY LENGTH (BL) |     |      |     |      | OH  |     |
|------------------|-----|------|-----|------|-----|-----|
| 5750             |     | 6000 |     | 6250 |     |     |
| 27               | 48° | 26   | 46° | 25   | 44° | 150 |
| 32               | 50° | 30   | 48° | 28   | 46° | 450 |
| 38               | 54° | 35   | 51° | 33   | 49° | 750 |

Tipping angle ( $\theta$ )  
 Body + payload mass, W (tonne)

### For guidance only;

Higher Rated Pressures may be possible. To check your application, email Edbro plc at <applications@edbro.co.uk>

### NOTES

- If hydraulic pressure is used to limit overloading, the system relief valve must be set to the Rated Pressure unless agreed otherwise by Edbro
- The system relief valve can be set to Maximum Pressure if the load is limited by other means. See RATINGS page for advice
- This cylinder is for lifting purposes only and sload conditions must be avoided
- Cylinder is painted in primer paint to RAL5013
- See bracket options page BRKT01, BRKT02
- See installation instructions INSTALL01
- Use oil according to specification OIL01

**\*Include 9mm Pull Out  
All Stages Fully Chromed**

**Edbro**  
SETTING THE INDUSTRY STANDARD

**Edbro plc**  
Nelson Street, Bolton, Lancashire BL3 2JJ UK  
Tel +44 (0) 1204 528888 Fax +44 (0) 1204 531957  
Email: postmaster@edbro.com Web: www.edbro.com

Technical Specifications are subject to change without notice  
Date Created/Updated: 23 December 2009 12:43:10  
Refer www.edbro.com to confirm latest specification  
All dimensions are in 'mm', unless otherwise stated