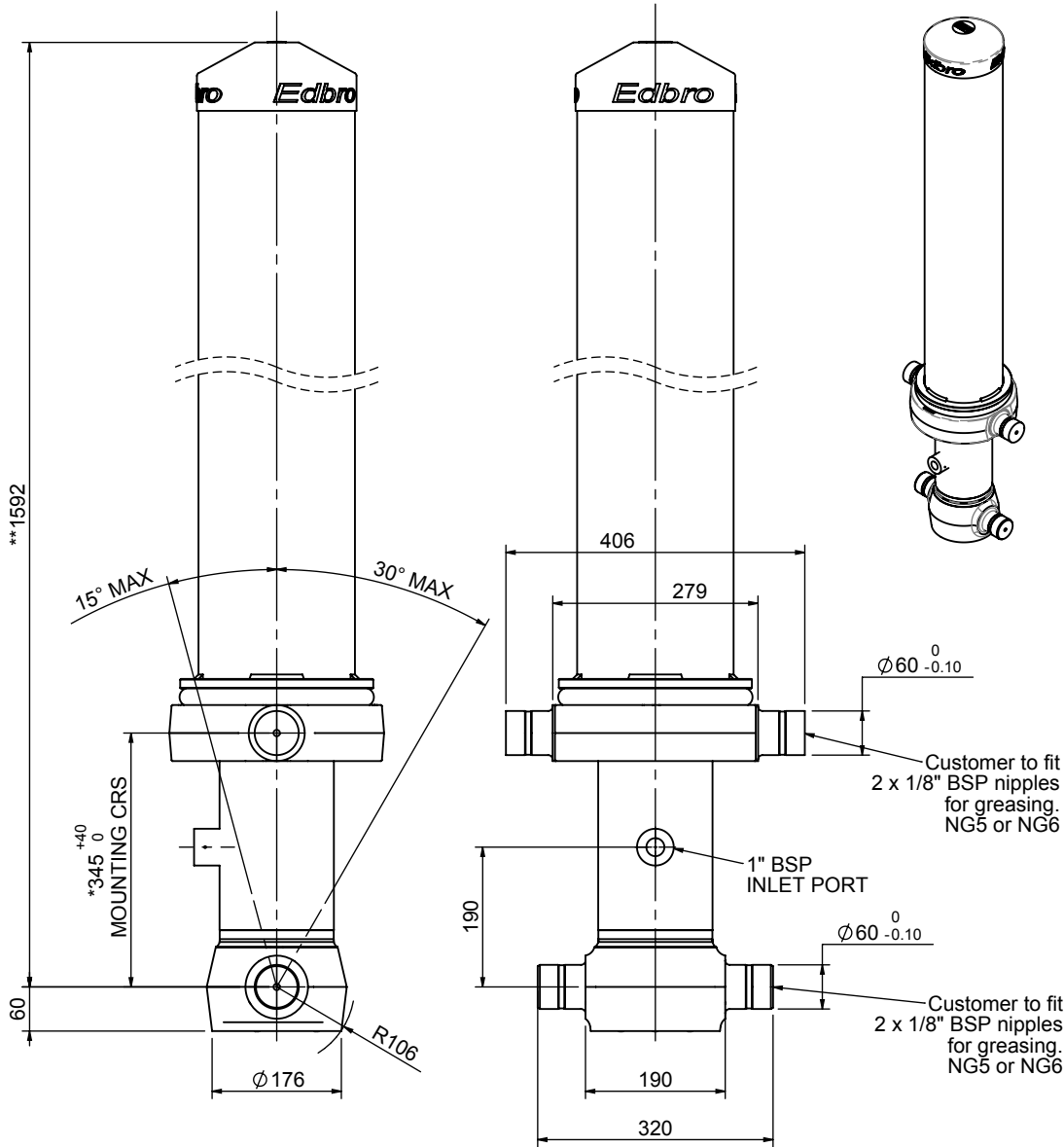


Cylinder 4 stage front end with outer cover

****ALLOW 50mm TO REMOVE CAP FOR SERVICING**

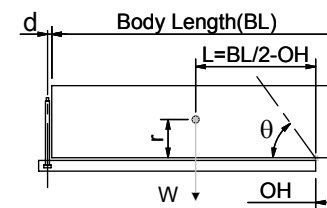


***Includes 14mm Pull Out.
All Stages Chrome Plated**

CS130044891B19H11C

SPECIFICATION		TIPPING CAPACITY : 26-40 TONNES***		
Stage	Diameter	Length	Stroke	Swept Volume
-	-	-	-	-
OUTER COVER	213	1205	-	-
0	155	1525	-	-
1	136	1490	1283	19
2	117	1490	1312	14
3	98	1490	1317	10
4	79	1490	972	5
Total (+5/-10)			4884	48
Final stroke reduced by	350	Priming Volume		13
Cylinder Mass (Kg)	186	Total Volume (Litres)		61
Maximum Pressure (Bar)	190	Max. first stage thrust		170 KN

***TIPPING CAPACITY AT WORKING PRESSURE



BODY LENGTH (BL)						OH
6000	6250	6500	6750	7000	7250	
29	48°	27	46°	26	44°	150
33	51°	31	49°	30	47°	450
40	54°	37	51°	34	49°	750

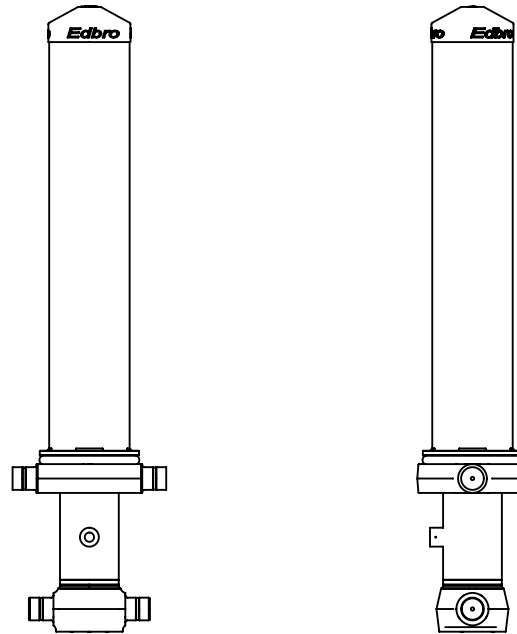
$d = 178; r = 750; \text{Working Pressure } 175 \text{ bar}$
 Tipping angle (θ)
 Body + payload mass, W (tonne)

For guidance only;

Higher working pressures and tipping capacities may be possible.
 To check your application email - applications@edbro.co.uk

NOTES

1. This cylinder is for lifting purposes only and side load conditions should be avoided
2. Cylinder is painted in primer paint to RAL5013
3. Refer to www.edbro.com for:-
 - Bracket details
 - Installation instructions that must be observed
 - Correct oil selection
 - An explanation of tipping capacity



CS130044891B19H11C