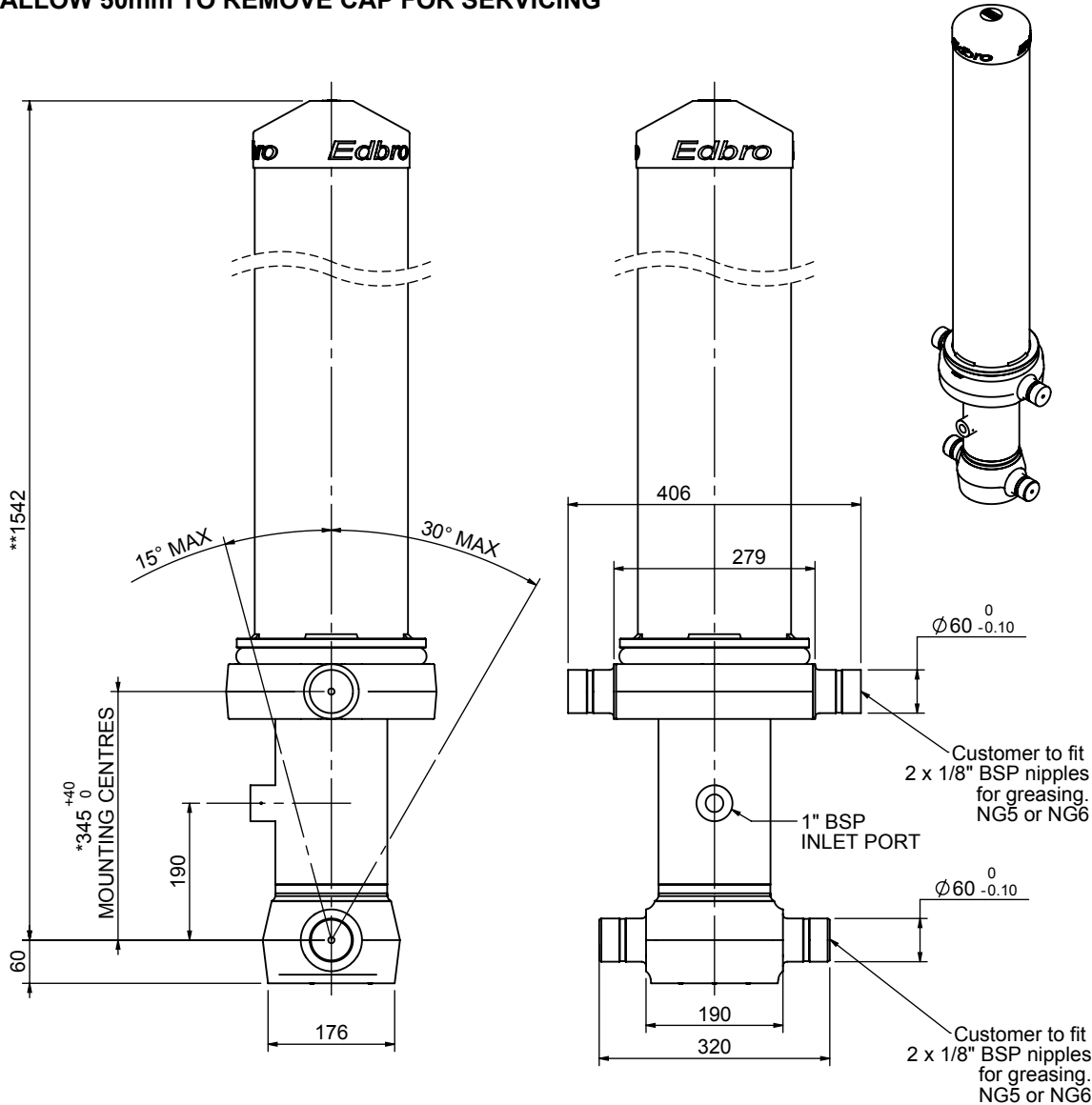


# Cylinder 4 stage front end with outer cover

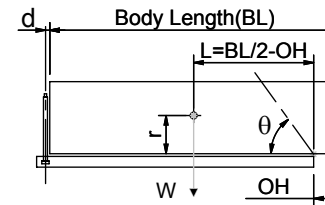
**\*\*ALLOW 50mm TO REMOVE CAP FOR SERVICING**



# CS130045041B19A11

SPECIFICATION		TIPPING CAPACITY : 25-35 TONNES***		
Stage	Diameter	Length	Stroke	Swept Volume
-	-	-	-	-
OUTER COVER	213	1155	-	-
0	155	1475	-	-
1	136	1440	1233	18
2	117	1440	1262	14
3	98	1440	1267	10
4	79	1440	1272	6
Total (+5/-10)			5034	48
Final stroke reduced by	0	Priming Volume		13
Cylinder Mass (Kg)	181	Total Volume (Litres)		61
Maximum Pressure (Bar)	190	Max. first stage thrust		170 KN

## \*\*\*TIPPING CAPACITY AT WORKING PRESSURE



BODY LENGTH (BL)						OH
6250	6500	6750				
27	48°	26	46°	25	44°	150
30	50°	29	48°	28	46°	450
35	53°	33	51°	31	48°	750

d = 178; r = 750; Working Pressure 175 bar

### For guidance only;

Higher working pressures and tipping capacities may be possible.

To check your application email - [applications@edbro.co.uk](mailto:applications@edbro.co.uk)

## NOTES

1. This cylinder is for lifting purposes only and side load conditions should be avoided
2. Cylinder is painted in primer paint to RAL5013
3. Refer to [www.edbro.com](http://www.edbro.com) for:-
  - Bracket details
  - Installation instructions that must be observed
  - Correct oil selection
  - An explanation of tipping capacity

\*Includes 14mm Pull Out.

**Edbro**  
SETTING THE INDUSTRY STANDARD

**Edbro plc**  
Nelson Street, Bolton, England, BL3 2JJ  
Tel +44 (0) 1204 528888 Fax +44 (0) 1204 531957  
Email: [postmaster@edbro.com](mailto:postmaster@edbro.com) Web: [www.edbro.com](http://www.edbro.com)

Technical Specifications are subject to change without notice  
Date Created/Updated: 17 July 2012  
Refer [www.edbro.com](http://www.edbro.com) to confirm latest specification  
All dimensions are in 'mm', unless otherwise stated