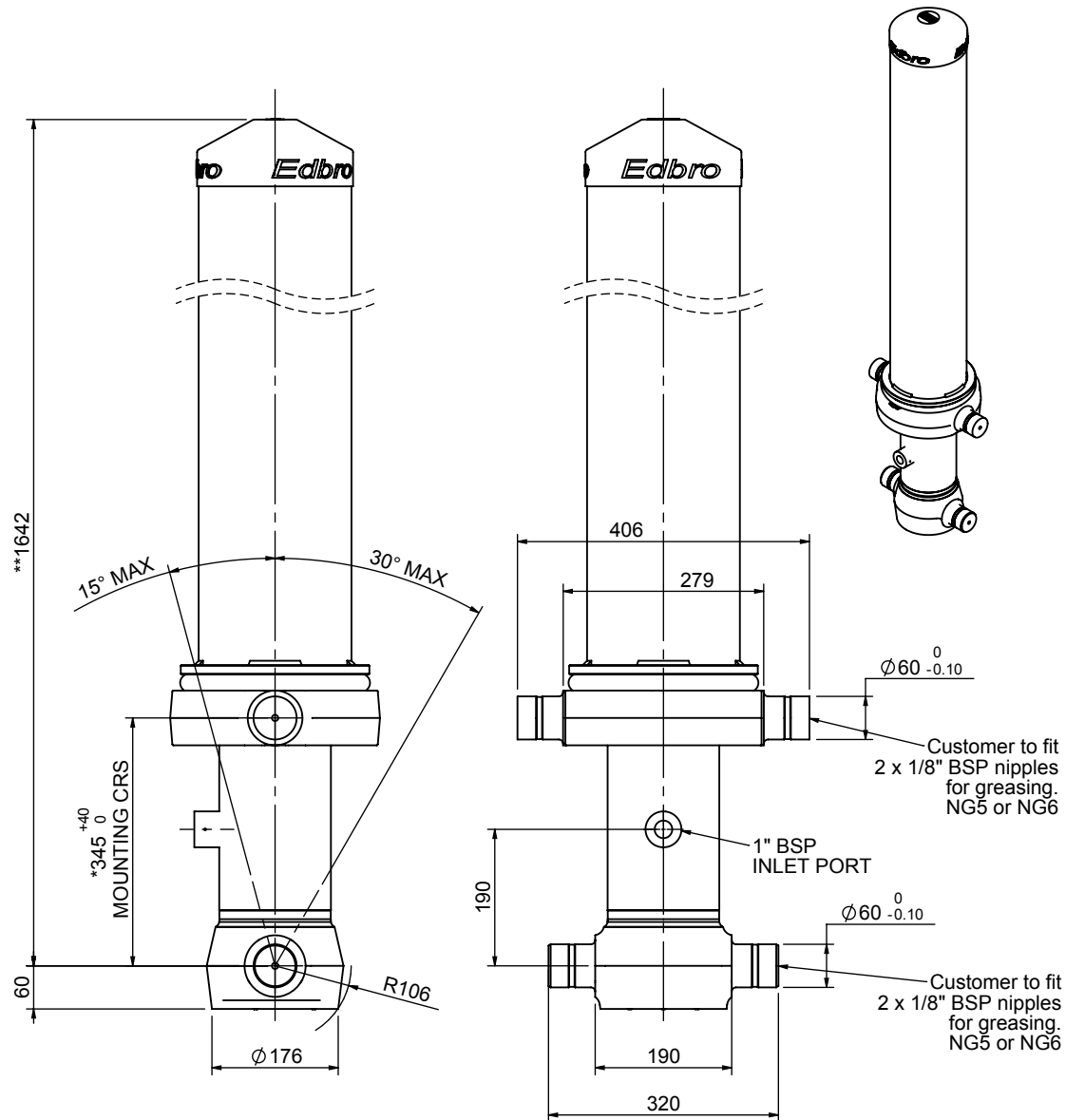


Cylinder 4 stage front end with outer cover

****ALLOW 50mm TO REMOVE CAP FOR SERVICING**



***Includes 14mm Pull Out.
All Stages Chrome Plated**

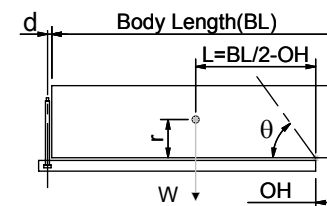
CS130045441B19A21C

SPECIFICATION

TIPPING CAPACITY : 23-33 TONNES***

Stage	Diameter	Length	Stroke	Swept Volume
-	-	-	-	-
OUTER COVER	213	1255	-	-
0	155	1575	-	-
1	136	1540	1333	19
2	117	1540	1362	15
3	98	1540	1367	10
4	79	1540	1372	7
Total (+5/-10)			5434	51
Final stroke reduced by	0	Priming Volume		14
Cylinder Mass (Kg)	186	Total Volume (Litres)		65
Maximum Pressure (Bar)	190	Max. first stage thrust		170 KN

***TIPPING CAPACITY AT WORKING PRESSURE



BODY LENGTH (BL)						OH
6750	7250	7750				
26	48°	25	44°	23	41°	150
29	50°	27	46°	25	43°	450
33	53°	30	48°	28	45°	750

$d = 178; r = 750; \text{Working Pressure } 175 \text{ bar}$

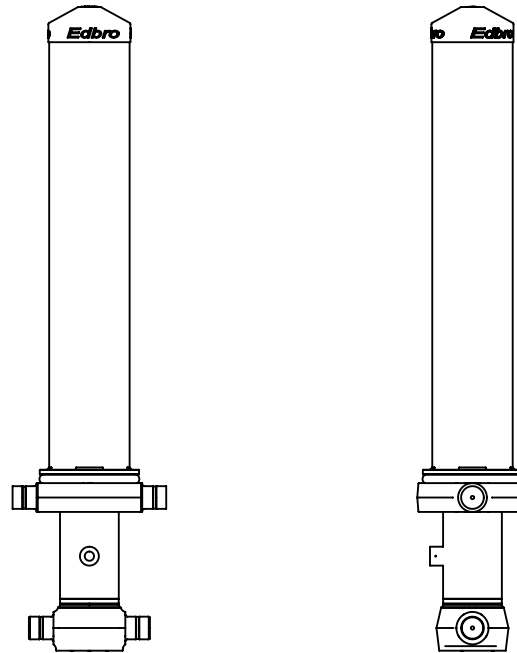
Tipping angle (θ)
Body + payload mass, W (tonne)

For guidance only;

Higher working pressures and tipping capacities may be possible.
To check your application email - applications@edbro.co.uk

NOTES

1. This cylinder is for lifting purposes only and side load conditions should be avoided
2. Cylinder is painted in primer paint to RAL5013
3. Refer to www.edbro.com for:-
 - Bracket details
 - Installation instructions that must be observed
 - Correct oil selection
 - An explanation of tipping capacity



CS130045441B19A21C