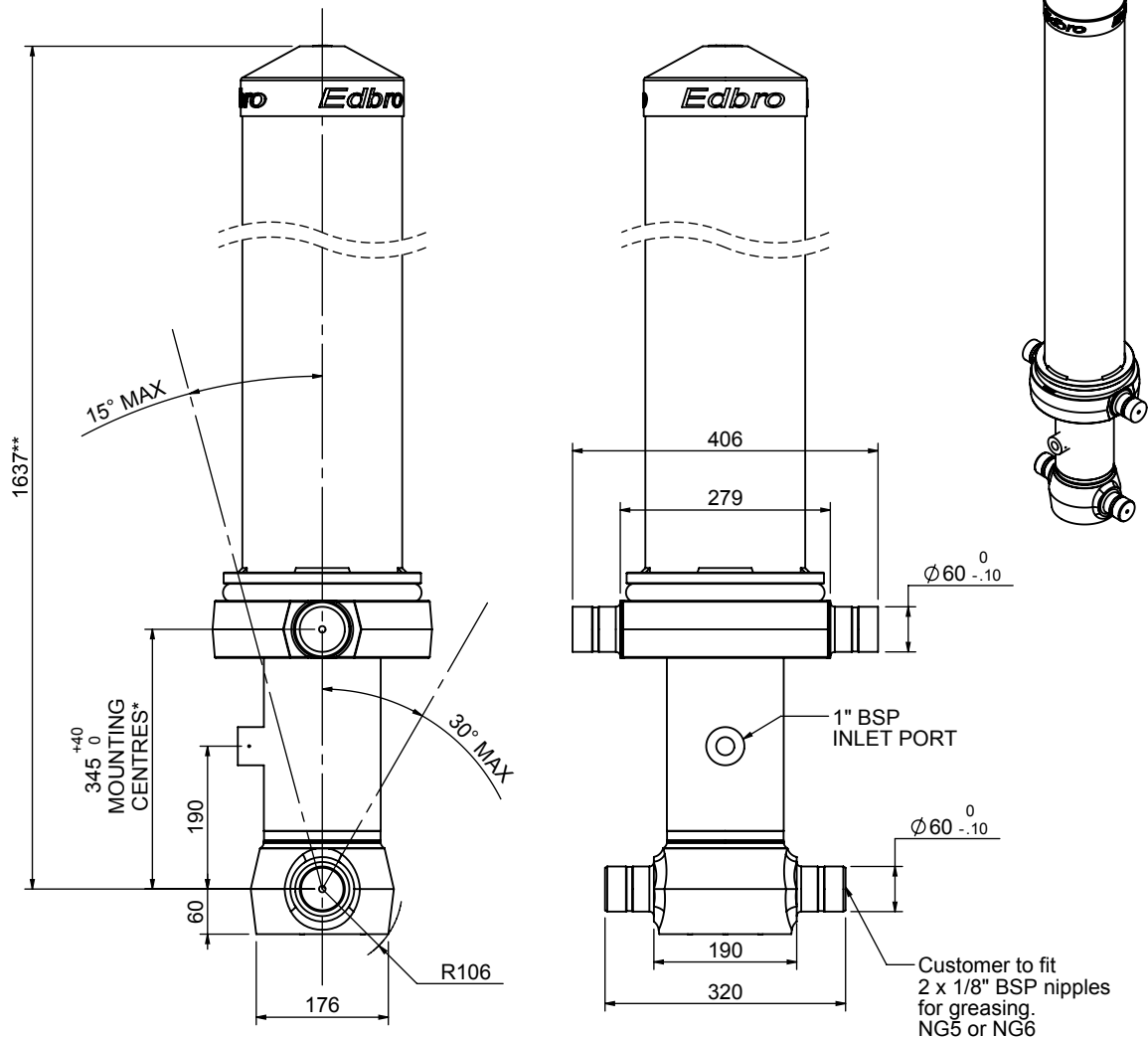


Cylinder 4 stage front end with Outer Cover

****ALLOW 50mm TO REMOVE CAP FOR SERVICING**



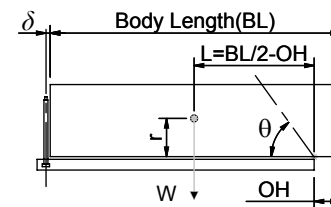
***Include 9mm Pull Out
All Stages Chrome Plated**

CS130045441B19A21C

SPECIFICATION		RATED CAPACITY : 24-36 TONNES***		
Stage	Diameter	Length	Stroke	Swept Volume
-	-	-	-	-
OUTER COVER	213	1240	-	-
0	155	1575	-	-
1	136	1540	1338	19
2	117	1540	1362	15
3	98	1540	1367	10
4	79	1540	1372	7
Final stroke reduced by	0	Total (+5/-10)	5439	51
Cylinder Mass (Kg)	182.91	Priming Volume	13.5	
Rated Pressure (Bar)	175	Total Volume (Litres)	64.5	
Maximum Pressure (Bar)	175	Max. first stage thrust	170 KN	

***TIPPING CAPACITY AT RATED PRESSURE

d = 178 ; r = 750



		BODY LENGTH (BL)				OH
		6500	7000	7500		
27	50°	25	46°	24	43°	150
31	52°	28	48°	26	44°	450
36	55°	31	50°	29	46°	750

Tipping angle (θ)
Body + payload mass, W (tonne)

For guidance only;

Higher Rated Pressures may be possible. To check your application, email Edbro plc at <applications@edbro.co.uk>

NOTES

- If hydraulic pressure is used to limit overloading, the system relief valve must be set to the Rated Pressure unless agreed otherwise by Edbro
- The system relief valve can be set to Maximum Pressure if the load is limited by other means. See RATINGS page for advice
- This cylinder is for lifting purposes only and sload conditions must be avoided
- Cylinder is painted in primer paint to RAL5013
- See bracket options page BRKT01, BRKT02
- See installation instructions INSTALL01
- Use oil according to specification OIL01