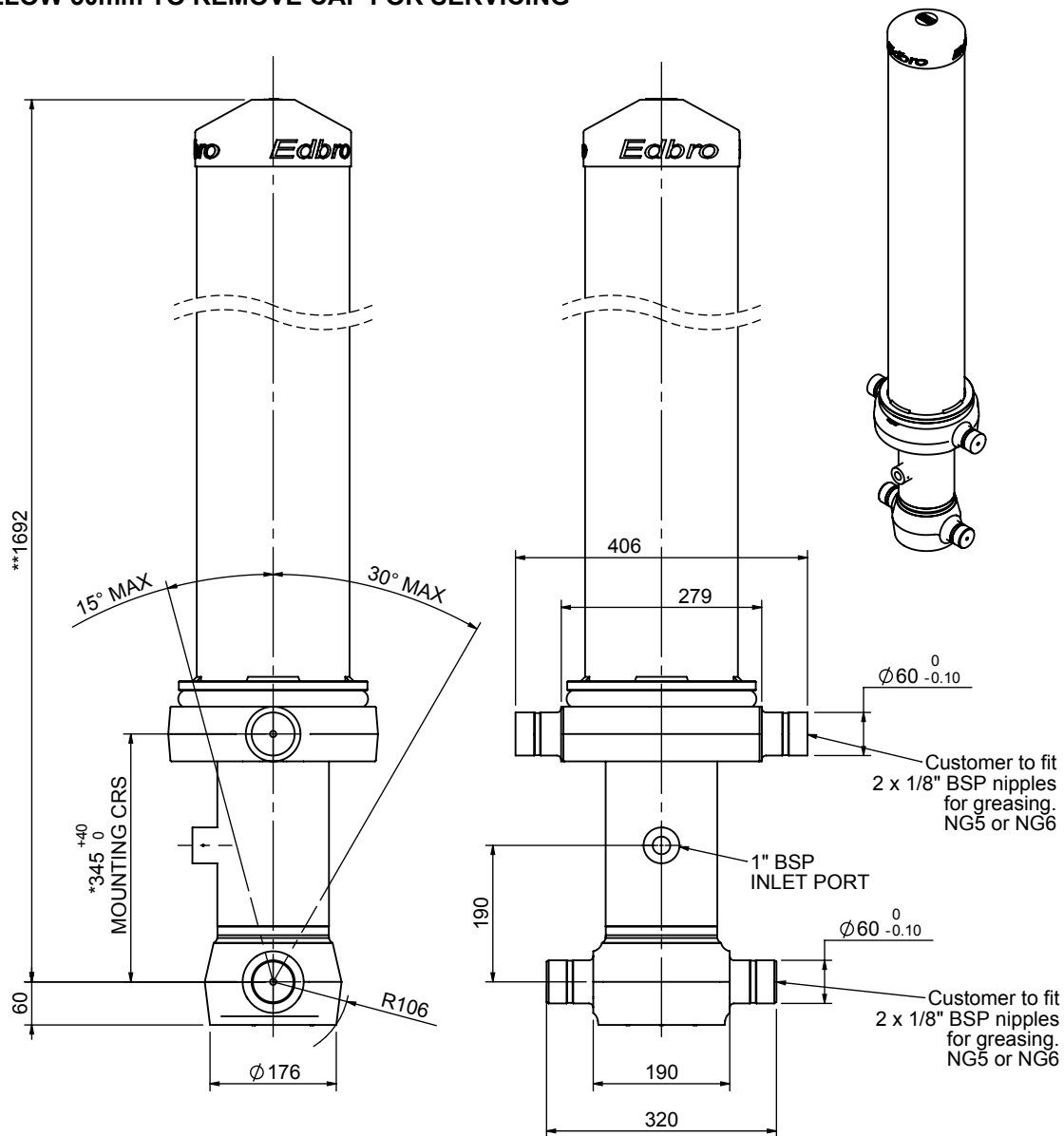


# Cylinder 4 stage front end with outer cover

**\*\*ALLOW 50mm TO REMOVE CAP FOR SERVICING**

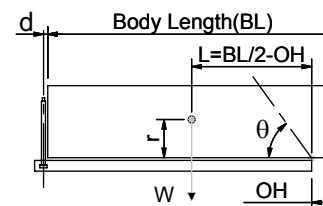


**\*Includes 14mm Pull Out.**

## CS130045641B19A11

SPECIFICATION		TIPPING CAPACITY : 23-32 TONNES***		
Stage	Diameter	Length	Stroke	Swept Volume
-	-	-	-	-
OUTER COVER	213	1305	-	-
0	155	1625	-	-
1	136	1590	1383	20
2	117	1590	1412	15
3	98	1590	1417	11
4	79	1590	1422	7
Total (+5/-10)			5634	53
Final stroke reduced by	0	Priming Volume		14
Cylinder Mass (Kg)	195	Total Volume (Litres)		67
Maximum Pressure (Bar)	190	Max. first stage thrust		170 KN

### \*\*\*TIPPING CAPACITY AT WORKING PRESSURE



BODY LENGTH (BL)						OH
7000	7500	8000				
26	48°	24	44°	23	41°	150
29	50°	27	46°	25	43°	450
32	52°	29	48°	27	45°	750

$d = 178$ ;  $r = 750$ ; Working Pressure 175 bar

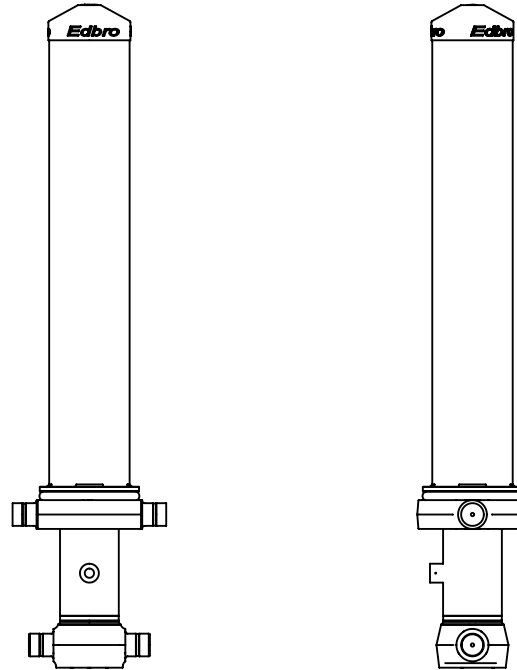
Tipping angle ( $\theta$ )  
Body + payload mass, W (tonne)

### For guidance only;

Higher working pressures and tipping capacities may be possible.  
To check your application email - [applications@edbro.co.uk](mailto:applications@edbro.co.uk)

### NOTES

1. This cylinder is for lifting purposes only and side load conditions should be avoided
2. Cylinder is painted in primer paint to RAL5013
3. Refer to [www.edbro.com](http://www.edbro.com) for:-
  - Bracket details
  - Installation instructions that must be observed
  - Correct oil selection
  - An explanation of tipping capacity



CS130045641B19A11